

REGENERATE, REIMAGINE, REVEAL

Envisioning the Mid-Sized City of the Future
A Synthesis of the Sudbury 2050 Urban Design Ideas Competition



We would like to acknowledge the Robinson-Huron Treaty of 1850. We also further recognize that Laurentian University is located on the traditional lands of the Atikameksheng Anishnawbek and that the City of Greater Sudbury also includes the traditional lands of the Wahnapiatae First Nation. We extend our deepest respect to Indigenous peoples - as a sign of our continued relationship, we will support Laurentian University's Truth and Reconciliation Task Force Recommendations. Miigwech.

Ka ke ginwaamdanaa Aki Gaabjidebendaagwak Robinson Huron Naakine-gewin ode 1850. Miinwa ginwaamdandaa Laurentian Chi-kinomaagegamik gewii teg maanpii gidaa kiimina Atikameksheng Anishinaabek debendaagwak miinwa Chi-odeno Sudbury miinwa gewii debendaagwak Wahnapiatae Anishinaabe kiing. Gichipiitenmananig Anishinaabek- ga nakiitaanaa weweni maanpii Laurentian Chi-kinomaagegamik Debwewin miinwa Minadaapnagewin Nakii Naadmageh Makwataagziiwin. Miigwech.

REGENERATE, REIMAGINE, REVEAL

Envisioning the Mid-Sized City of the Future:
A Synthesis of the Sudbury 2050 Urban Design Ideas Competition

Prepared by

Tristan O’Gorman

Professional Advisors

Blaine Nicholls and Terrance Galvin

**REGENERATE,
REIMAGINE, REVEAL**

Envisioning the Mid-Sized City of the Future
A Synthesis of the Sudbury 2050 Urban Design Ideas Competition

ACKNOWLEDGMENTS - SPONSOR

Regenerate, Reimagine, Reveal: Envisioning the Mid-Sized City of the Future - A Synthesis of the Sudbury 2050 Urban Design Ideas Competition has been made possible through generous funding from **Bélanger Salach Architecture**.



TABLE OF CONTENTS

	<i>Acknowledgments</i>	viii
	<i>Foreward by Jason McLennan</i>	xii
	<i>Competition Summary</i>	xiv
	<i>Document Goals and Targeted Audience</i>	
INTRODUCTION	EXECUTIVE SUMMARY	14
CHAPTER 01	REGENERATE NATURAL PROCESSES	20
	1.1 Rewild Barren Landscapes	24
	1.2 Remediate Damaged Waterways	28
	1.3 Foster Interspecies Assemblages	34
	1.4 Embrace the Winter City	38
	1.5 Phase Revitalization Efforts	42
CHAPTER 02	REIMAGINE URBAN SPACES	50
	2.1 Beautify the Downtown Core	54
	2.2 Repurpose Derelict Areas	58
	2.3 Consider Adaptive Reuse	68
	2.4 Design Regenerative Buildings	72
	2.5 Encourage Housing Density	76
	2.6 Offer Alternative Transportation	80
CHAPTER 03	REVEAL GROWTH OPPORTUNITIES	86
	3.1 Cultivate Urban Agriculture	90
	3.2 Innovate Mass-Timber Industries	94
	3.4 Develop Interdisciplinary Relations	102
	3.4 Support Knowledge Sharing	108
	3.5 Celebrate Tradition	112
CONCLUSION	DESIGN FOR THE FUTURE MID-SIZED CITY	118
APPENDIX A	COMPELLING COMPETITION IMAGES	120
	<i>Epilogue by Lisa Rochon</i>	162
	<i>Competition Credits</i>	164

FOREWARD

Sudbury has always had great potential. Unique geologically, unique culturally and economically, it is home to an incredible re-greening story that has caught the world's attention. Beautiful lakes and being a gateway to the North mark its position at the crossroads between North and South and East and West.

And yet, from a planning perspective, Sudbury has mostly failed to live up to its potential. We have not taken advantage of our position amongst hills and lakes to create a unique urbanity. We have favored the car and sprawl over the heart of our community and then wondered why the center isn't functioning. We have always blasted our rock instead of embracing it and struggled to meaningfully engage with our lakes, creeks and marshes.

As a summary of the 'Sudbury 2050 Urban Design Ideas Competition,' launched in 2020, Regenerate/Reimagine/Reveal represents a new possibility and brings together an important collection of ideas and designs from a broad spectrum of visionaries concerned with Sudbury's re-awakening. A city in the north that does live up to its potential and is more than regionally important – makes Sudbury internationally relevant.

The world isn't just big cities or mega cities; there is agency and importance in mid-sized cities, especially in Canada. The Sudbury experiment is one that has relevance, to show that a former purely industrial community can become much more – it can regenerate its landscape and its future.

Architecture and urban design set the framework for the future, something that the McEwen School of Architecture realized when organizing this competition. The intention was a rallying cry for the city to see itself re-made. As the world begins to grapple with the emerging reality of climate change, it is critical that we understand how to live in 'right' relationship with the environment – and many of the visions put forward use this as a center point – rewilding, healing and continuing Sudbury's legacy as an environmental steward. Others recognize that for the city to thrive the core must be beautiful, inspiring, and hopeful, focusing on transformations that will engage and excite visitors and residents alike. Much of this investment is long overdue. Still others focused on the systems and infrastructure that the reimagined city will require to thrive: how we grow food, how we travel, how we learn and share information, with a focus on new models for housing and strategies to preserve and re-use our existing building stock. Block by block and street by street there are opportunities to elevate the community to its rightful place at the center of Northern Ontario. The following entries remind us that a renewed city isn't static – it must grow and evolve and constantly adapt to the larger forces of society and environment.

As a former resident of Sudbury, and an architect and urban planner that practices all over the world, my heart and imagination often returns to the 'rock' and the potential of this four-season city to embrace what it can become. With the right planning and the right vision, Sudbury can become one of Canada's great communities, stitching together a resilient and vibrant urban fabric whose community legacy will be another 100 years of relevance. Embedded within each of the competition submissions that follow are kernels of hope and inspiration, and I invite you all to dive in.

Jason F. McLennan

Principal, McLennan Design
Chief Sustainability Officer, Perkins & Will
Founder, Living Building Challenge
Member, McEwen International Advisory Board

CurtWillPhoto



COMPETITION SUMMARY

The Sudbury 2050 Urban Design Ideas Competition was a progressive international competition led by the McEwen School of Architecture (MSoA) in collaboration with the local community. Launched in 2020, it offered the opportunity for entrants to think creatively about the city's complete urban core as it relates to the region's immediate needs as well as a rapidly changing global environment. The competition encouraged multidisciplinary teams of creatives to plot changes in the urban fabric from 2020 until 2050, to articulate the successive and ongoing nature urban revitalization takes.

The goal of this Urban Design Ideas Competition is to explore a wide range of options and opportunities for the evolution of a mid-sized city's urban core and to ultimately set out aspirational urban design principles that can guide a city's future development, while also setting a precedent for urban renewal strategies of all cities that exist at a similar scale and context.

This document aims to distill key findings from the competition submissions and present them in a manner that is accessible to those best-positioned to enact change.

CurtWillPhoto



DOCUMENT GOALS

1 TO PROVIDE AN ACCESSIBLE DOCUMENT THAT PLATFORMS THE INSPIRED VISIONS FROM THE SUDBURY2050 URBAN DESIGN IDEAS COMPETITION

The first goal of this document is to increase the accessibility of the submissions from the Sudbury 2050 Urban Design Ideas Competition. It does so by consolidating the inspired proposals into one document that is available digitally to the general public, and designed to be easily printed on standard printers if desired. In addition to cultivating further public interest, the document will be offered to the City of Greater Sudbury as a trove of design innovation as it prepares the next iteration of its Downtown master plan.

2 TO SYNTHESIZE AND ARTICULATE THE KEY THEMES THAT EMERGED FROM THE COMPETITION AS THEY PERTAIN TO THE FUTURE OF MID-SIZED CITIES

Secondly, the document is clustered thematically in order to underscore recurring challenges and opportunities that are prevalent across all cities of a similar scale and context to Sudbury. These themes highlight the recurrent design interests of the public with regard to generating changed urban landscapes that are healthy, resilient, and desirable.

3 TO PROVIDE A FRAMEWORK FOR THE DESIGN OF MID-SIZED CITIES OF THE FUTURE THAT MAY GUIDE DECISION-MAKERS TOWARDS TRULY INNOVATIVE URBAN DESIGN SOLUTIONS

Lastly, the document strives to make evident the many solutions that mid-sized cities could employ to set out new visions for their futures. This framework is presented as key ideas and key messages, through the competition submissions themselves. Although applied to the Sudbury context, their responses are pertinent and applicable to a multitude of cities.

TARGETED AUDIENCE

The targeted audiences of this project are those with a vested interest in their urban landscapes as well as those best poised to enact future change both locally and in contexts of a similar scale.

With this in mind, the document takes into account and tailors its layout to each of its potential reading groups, including a future **Downtown Master Plan Community Advisory Committee, City of Greater Sudbury staff and council members, as well as future consultants.**

This project, although timed just prior to a proposed update to the downtown master plan for the City of Greater Sudbury, should also anticipate a broader audience, in the hopes of presenting strategies for all mid-sized cities to enact as part of their own urban renewals.

INTRODUCTION

EXECUTIVE SUMMARY

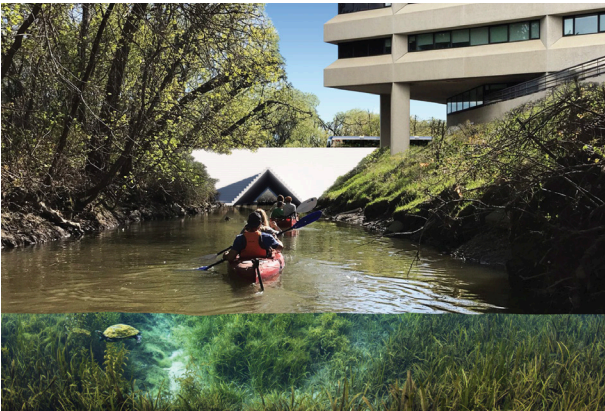
The Sudbury 2050 Urban Design Ideas Competition was a progressive international competition led by the McEwen School of Architecture (MSoA) in collaboration with the local community. Launched in 2020, it offered entrants the opportunity to think creatively about the city's complete urban core as it relates to the region's immediate needs, as well as a rapidly changing global environment.

The Sudbury2050 Urban Design Ideas Competition generated regional and international interest in imagining a revitalized mid-sized city. The 99 responses brought forth a plethora of inspired proposals of how the mid-sized city of the future can **regenerate** natural processes, **reimagine** urban spaces, and **reveal** new opportunities for growth.

This document aims to platform the strongest ideas in an accessible document, to distill and articulate the key ideas and messages explored, and to generate a conversation about the design of mid-sized cities in the future.

The intent of this executive summary, conversely, is to introduce the 16 key themes that were repeatedly explored across the 99 competition proposals - and to present them as calls-to-action. These prompts are accompanied by thumbnail images that capture the essence of the idea.

PART 01 - REGENERATE NATURAL PROCESSES



1.1 REWILD BARREN LANDSCAPES

- Identify non-productive plots of land within the downtown core, as well as in outlying regions, that have potential to become thriving ecosystems once again;
- Reintroduce native plantings and provide habitats for displaced species;
- Promote resilience by allowing these naturalized areas to reclaim nature at their own pace, and in their own ways;

1.2 REMEDIATE DAMAGED WATERWAYS

- Work towards reclaiming waterways that have been buried, contaminated, or otherwise compromised;
- Restore the function of these bodies of water by protecting their shorelines, regulating their use, and protecting their non-human inhabitants;
- Celebrate these creeks, rivers, wetlands or lakes as focal points within the city that the community can gather around;

1.3 FOSTER INTERSPECIES ASSEMBLAGES

- Recognize the intrinsic value that other species bring to urban spaces;
- Offer opportunities for terrestrial, avian, and aquatic species to flourish alongside humans through habitat restoration and sensitive design;

1.4 EMBRACE THE WINTER CITY

- Celebrate the unique character that is presented by the extended winter season in the north;
- Consider additional ways to engage the public with the winter season in a meaningful way, both indoors and out;

1.5 PHASE REVITALIZATION EFFORTS

- Recognize that sustainable development does not occur overnight;
- Implement a plan that unfolds and evolves over time in response to changing climates, funds, and management;
- Consider what the next major milestone in the city's greening narrative is, and what milestones are needed to realize this;

PART 02 - REIMAGINE URBAN SPACES

**2.1 BEAUTIFY THE DOWNTOWN CORE**

- Concentrate revitalization efforts in the downtown core - with an emphasis on enticing businesses and inhabitants to the area;
- Embrace artistic expression as a means of beautifying spaces that would otherwise be unattractive such as facades, vacant lots, and alleyways;
- Consider lighting, planting, and paving strategies as means of fostering a downtown core that is aesthetically pleasing to the eye;

**2.2 REPURPOSE DERELICT AREAS**

- Identify spaces that compromise the vitality of the urban setting outside of peak hours such as expansive parking lots, rail yards, vacant lots, and alleyways;
- Work towards stacking, consolidating or else relocating street-level spaces that inhibit community development, and could instead become smaller vibrant community spaces;
- Consider re-pedestrianizing said spaces by introducing public spaces, pop-up events, community gardens or adaptable programming;

**2.3 CONSIDER ADAPTIVE REUSE**

- Preserve heritage buildings by encouraging the restoration of existing landmarks rather than their demolition or decay;
- Recognize that the most sustainable building is the one that already exists;
- Develop a broader strategy for the repurposing of buildings that is ultimately for the benefit of the community;

**2.4 DESIGN REGENERATIVE BUILDINGS**

- Implement policy that encourages new builds to be active regenerators in terms of habitat, energy, waste, water, and food;
- Create buildings that have a net-positive impact on the environment they occupy, both in their designs and in their operations;



2.5 ENCOURAGE HOUSING DENSITY

- Increasing the housing density in currently populated areas encourages the growth and vitality of existing communities, while accommodating a more diverse socio-economic demographic - particularly in the core;
- Consider what creative workspaces, innovative industries and tax strategies are needed to complement housing in order to attract new people to the downtown core;
- Densify the downtown core as a means of supporting the existing businesses there, as well as to increase safety;



2.6 OFFER ALTERNATIVE TRANSPORTATION

- Decentralize the dependency on cars that has led to pervasive vacant lots in downtown cores;
- Support a pedestrian lifestyle by offering safe sidewalks and paths, and by providing walkable cities where services and resources are concentrated in highly populated areas;

PART 03 - REVEAL NEW GROWTH OPPORTUNITIES



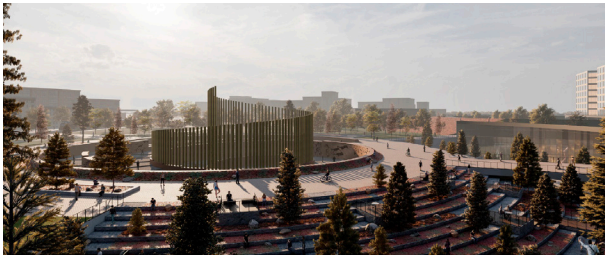
3.1 CULTIVATE URBAN AGRICULTURE

- Invest in urban growing spaces to provide additional, year-round access to local produce;
- Continue to support local farmers and agricultural businesses;
- Consider rooftops and parking lots as spaces for new agricultural opportunities;



3.2 INNOVATE MASS-TIMBER INDUSTRIES

- Expand the use of mass-timber construction;
- Learn and cherish forests as a provider of several wealth streams;
- Support northern industries and promote regional and global trade;



3.3 DEVELOP INTERDISCIPLINARY RELATIONS

- Establish relations between mutually-benefiting disciplines;
- Identify synergies between professions, industries, and resources that can be capitalized on to maximize efficiencies where possible;

3.4 SUPPORT KNOWLEDGE SHARING

- Promote continuing education and provide new opportunities to learn;
- Support study in tandem with research, as well as alternative pedagogies;

3.5 CELEBRATE TRADITION

- Celebrate the many cultures that populate the city's demographic and provide opportunities for congregation and expression;
- Identify and support the role of Indigenous knowledge in the creative process of redesigning a city;

Sudbury is at a point in its development where there is a unique confluence of opportunities and challenges. An unprecedented amount of development is being proposed both by the City and private developers. Of necessity, the City of Greater Sudbury will have to reaffirm its approach to future planning in order to appropriately reflect the ambitions of its constituents with regards to cultivating a healthy and desirable city. The city will be doing this while also anticipating an evolving global context and its shifting values with regard to the environmental impacts of land use developments and infrastructural projects.

Sudbury is in the rare position to be able to initiate a second phase of its internationally recognized re-greening story, a story that not only continues to exemplify grassroots remediation efforts, but sustainable urban development as well, particularly, it can how the two can be synonymous. The city can become an incubator of design innovation and, given its mid-sized scale, a case study for similar cities. In this way, the imminent development of Sudbury's urban core and outlying districts can become a catalyst for a broader urban renewal approach that is grounded in ecological ambitions.

For those interested in exploring any of the ideas presented further, readers are encouraged to visit the main document, *Regenerate, Reimagine, Reveal*, which presents complementary images and texts for each key theme and will point the reader to where additional information is located. This document aims to platform the strongest ideas in an accessible document, to distill and articulate the key ideas and messages explored, and to generate a conversation about the design of mid-sized cities in the future.

REGENERATE NATURAL PROCESSES





CHAPTER 01

REGENERATE NATURAL PROCESSES

Chapter 01 explores five explorations for restoring commonly fractured ecologies in mid-sized cities. Each idea is presented as a call-to-action for stakeholders to cultivate systems, processes, and strategies that foster life as a whole in urban settings, and to recognize that in doing so the result will be a healthier and more attractive city for humans as well.

1.1 REWILD BARREN LANDSCAPES

- Identify non-productive plots of land within the downtown core, as well as in outlying regions, that have potential to become thriving ecosystems once again;
- Reintroduce native plantings and provide habitats for displaced species;
- Promote resilience by allowing these naturalized areas to reclaim nature at their own pace, and in their own ways;

0582 REWILDING

Sahana Dharmaraj / Jenna Lamb / Anastasia Renaud
/ Taylor Um / Kevan Cress / Shannon McMillan

“Rewilding facilitates urban connectivity by working with existing parks and forested areas and permeating throughout the city’s urban routes to allow an equitable network of access to nature and transportation.

The symbiotic relationship created by the wild nature and the city streets, laneways, and pathways will change Sudbury from a city of separate zones to a cohesive biophilic city.”



GENERATES MICRO-CLIMATES



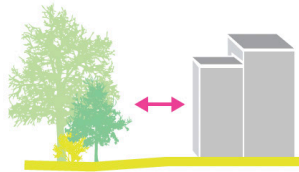
CREATES HABITATS



ALLOWS FOR
STORMWATER MANAGEMENT



FOSTERS BIODIVERSITY



PROVIDES
EQUAL ACCESS TO NATURE



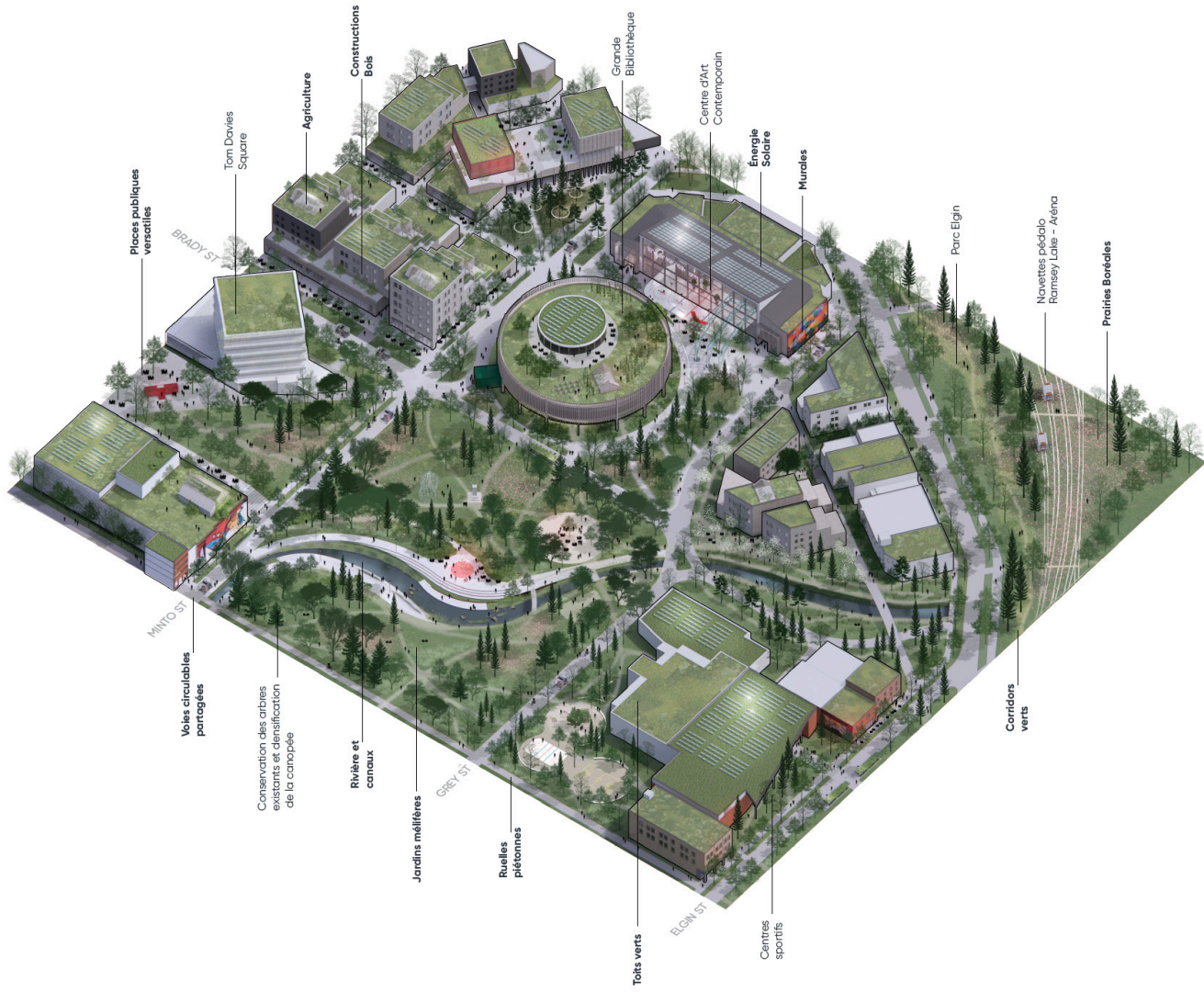
0322 SÈVE

Karyna St-Pierre / Julie Parenteau / Émilie Labrousse
/ Pierre-Yves Diehl

OPEN CATEGORY - WINNING PROPOSAL

“On révèle la richesse de la biodiversité et de la culture existante. Les milieux de vie et les aires collectives s’inscrivent dans une vision de développement durable pour une qualité de vie supérieure.

On utilise des matériaux locaux et écologiques, on conçoit des lieux inclusifs en se préoccupant de la biophilie. On mise sur une économie circulaire. On fait de la place pour l’agriculture urbaine à travers des toits verts, des serres et des jardins collectifs pensés à même les habitations.”



1.2 REMEDIATE DAMAGED WATERWAYS

- Work towards reclaiming waterways that have been buried, contaminated, or otherwise compromised;
- Restore the function of these bodies of water by protecting their shorelines, regulating their use, and protecting their non-human inhabitants;
- Celebrate these creeks, rivers, wetlands or lakes as focal points within the city that the community can gather around;

5397 VISION

Marcus Parviainen

“Sections of Junction Creek, currently covered underground, are daylit and opened to the sky. **These sections form a string of micro wetlands within the city, increasing both public amenity and biodiversity within the downtown core.**”



2861 THE NEW NICKEL

Sarah Ives / Don Toromanoff / Ailsa Craigen / Kristen Sarmiento / Madina Koshanova / Rita Wang / Azad Chichmanian / Lilia Koleva

“Part of Sudbury’s latency is its large network of lakes and connecting waterways. The Junction Creek which currently runs through the city is known as a valued natural asset. However, many parts of it are buried under thick layers of concrete and it is threatened by industrial activities. The Creekscape is tied to an initiative to reveal parts of the river. **By exposing the river, it can be more successful as means for flood management, a source for drinking water, recreation, eco-tourism, habitat and wildlife.**”

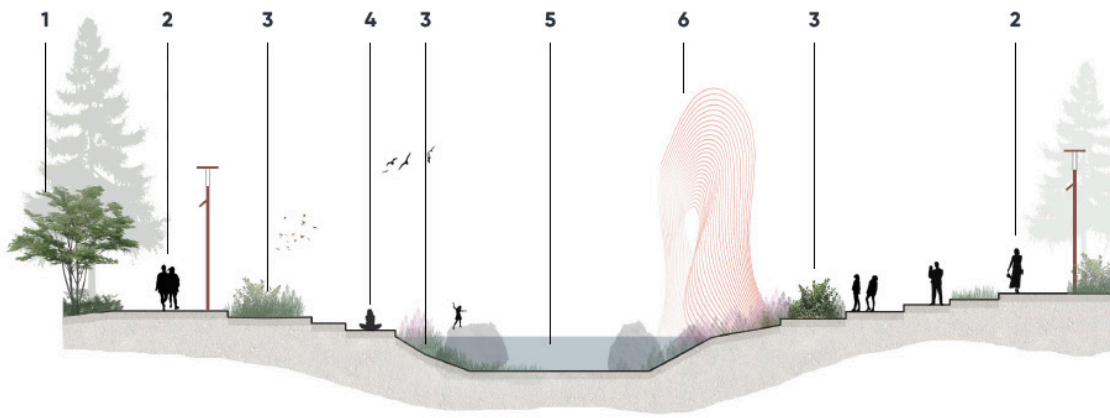


0322 **SÈVE**

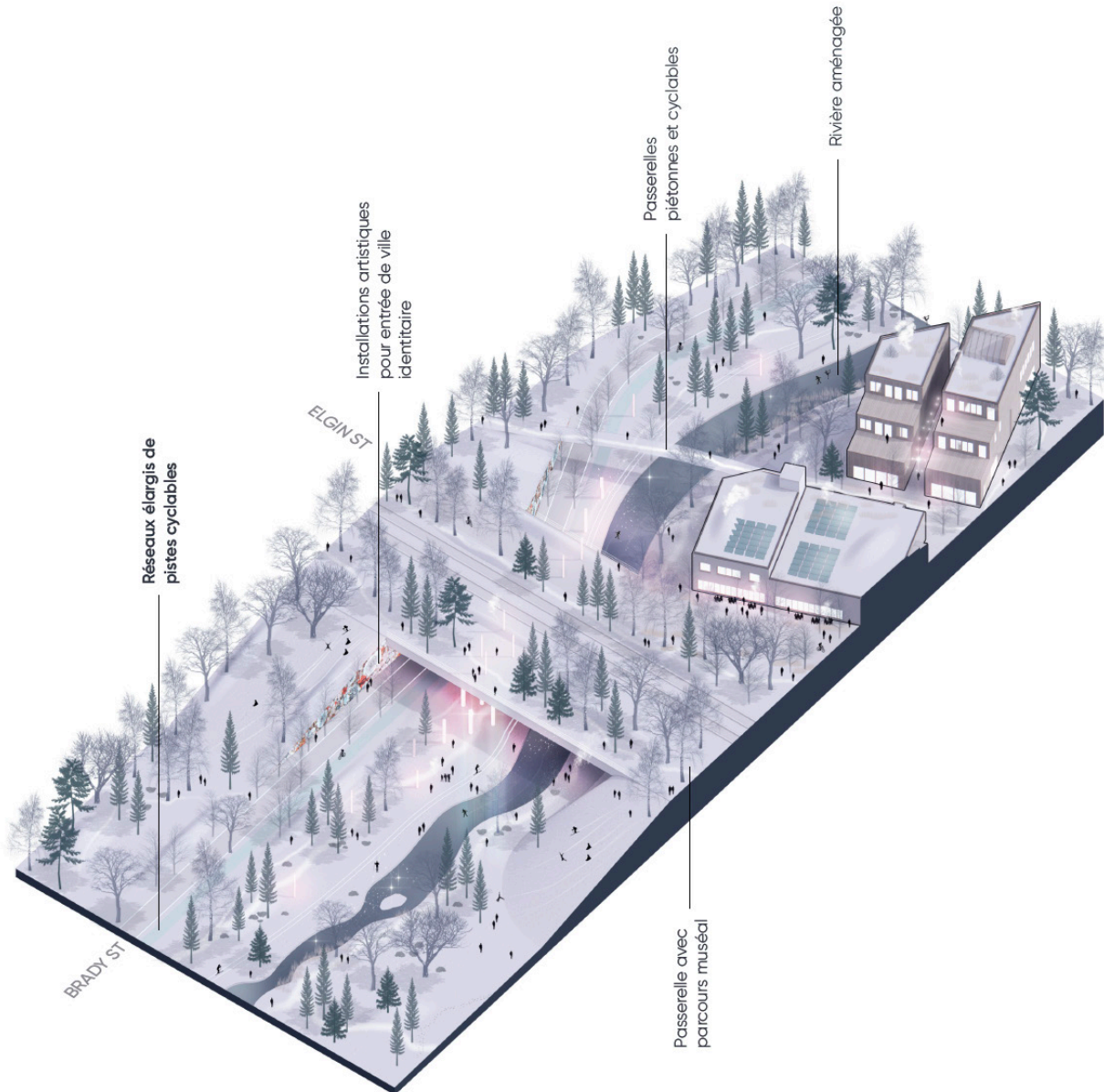
Karyna St-Pierre / Julie Parenteau / Émilie Labrousse
/ Pierre-Yves Diehl

OPEN CATEGORY - WINNING PROPOSAL

“Les cours d’eau refont surface et viennent vivifier le territoire. **La nouvelle coulée bleue profite autant à la biodiversité qu’à la population.**”



- 1 Massif type sous bois
- 2 Boardwalk le long de la rivière
- 3 Jardins d'eau
- 4 Places publiques multi-fonctionnelles en escalier
- 5 Rivière avec roches pour utilisation versatile
- 6 Installations artistiques temporaires aux abords des berges



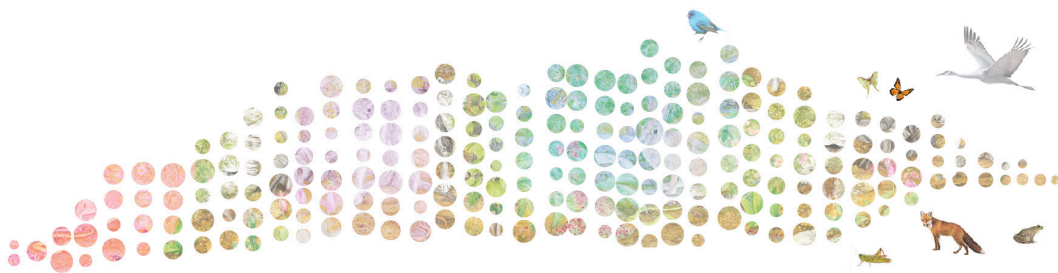
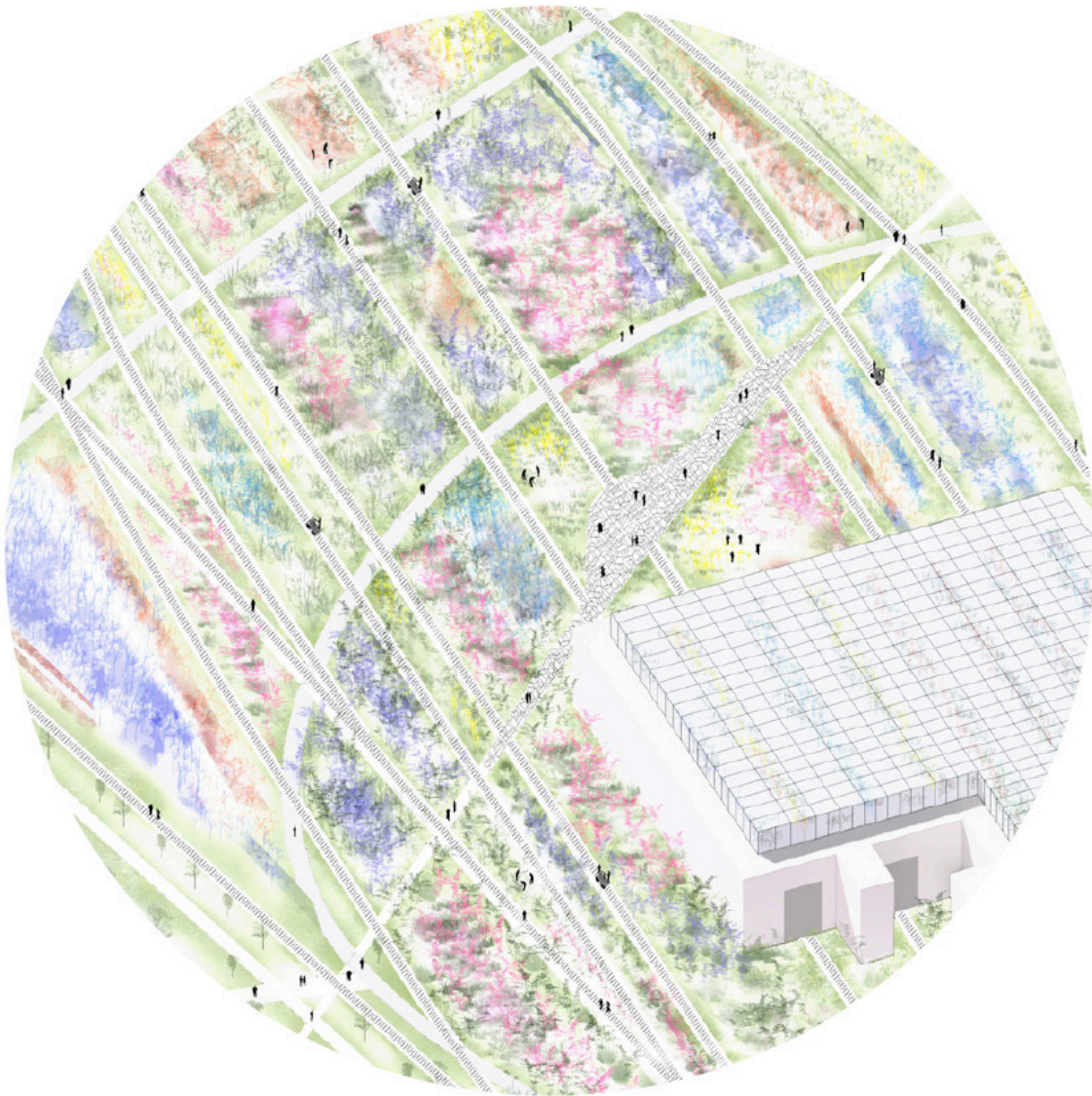
1.3 FOSTER INTERSPECIES ASSEMBLAGES

- Recognize the intrinsic value that other species bring to urban spaces;
- Offer opportunities for terrestrial, avian, and aquatic species to flourish alongside humans through habitat restoration and sensitive design;

2861 THE NEW NICKEL

Sarah Ives / Don Toromanoff / Ailsa Craigen / Kristen Sarmiento / Madina Koshanova / Rita Wang / Azad Chichmanian / Lilia Koleva

“The New Nickel, brings life into the city. **The intention is to create multiple urban ‘scapes’ that have distinct starting points that, in time, spread and blend with one another, to create a positive urban experience for humans, wildlife and their natural habitats: Greenscape, Timberscape, Creekscape, and Hardscape.** Building on the stewardship for nature that already exists in Sudbury, the community allotment garden provides a space for residents to cultivate the land and become an active participant in the re-greening of the city.”



Flowers	Plants	Urban Agriculture	Insects	Amphibians	Birds	Mammals
Yellow Pond Lily White Water Lily Pearly Everlasting Bog Laurel	Haircap Moss Honeysuckle Bluejoint Blueflag Iris	Fruit Trees Ground Cherries Blueberries Squash	Hoverfly Hagen's Bluet Tiger Swallowtail Monarch Butterfly	Blanding Turtle Green Frog Spring Peeper American Toad	Northern Harrier Nighthawk Dark-eyed Junco Great Blue Heron	American Mink Muskrat Red Fox Meadow Mouse

3478 **POLLINATING SUBBURY**

Donsei Kim / Tommy Yang

“Native American Storytelling and the practice of passing down tradition illustrates and positions humans into the larger network of the earth. **Our proposition adapts the existing landscape as a framework for speculating new futures for diverse sets of beings to co-exist, a future where humans are part of nature.**”

bio-diverse home
13 amphibian species

bio-diverse home
9 reptile species

bio-diverse home
46 mammal species

URBAN INGREDIENTS

INSECTS	MONARCH BUTTERFLIES <i>Danaus plexippus</i>	BEES <i>Hymenoptera</i>
TO WINGS BEATS	BLUE HERON <i>Ardea herodias</i>	OSPREY <i>Pandion haliaetus</i>
A BIRD BEATS	MOOSE <i>Alces alces</i>	RACCOON <i>Procyon lotor</i>
BEETLE ABANDONS URBANIZATION	COMMON REED <i>Phragmites australis</i>	COMMON MILKWEEED <i>Thlaspi sylvatica</i>
PRODUCING SOCIAL SYSTEMS OVER TIME	SPOTTED LADYSMANTH <i>Spigelia pectinaria</i>	SEA PINK GOLDENROD <i>Helianthus scaberrimus</i>
	BITTERSWEET NIGHTSHADE <i>Solanum dulcamara</i>	MILKWEED <i>Asclepias tuberosa</i>
	BEYOND THE GREEN DEAL	CREATION OF THE INFRASTRUCTURE OF CARE
	RECLAIMING PHYSICAL FORM NETWORKS	NEW MEDICAL PRACTICES HERBAL MEDICINE
	NEW ASSESSMENT PROCESSES	WASTE SPERLIVES COMPOSTING
		FOOD FORAGING
		AWARENES BUILDING



1.4 EMBRACE THE WINTER CITY

- Celebrate the unique character that is presented by the extended winter season in the north;
- Consider additional ways to engage the public with the winter season in a meaningful way, both indoors and out;

0322 SÈVE

Karyna St-Pierre / Julie Parenteau / Émilie Labrousse
/ Pierre-Yves Diehl

OPEN CATEGORY - WINNING PROPOSAL

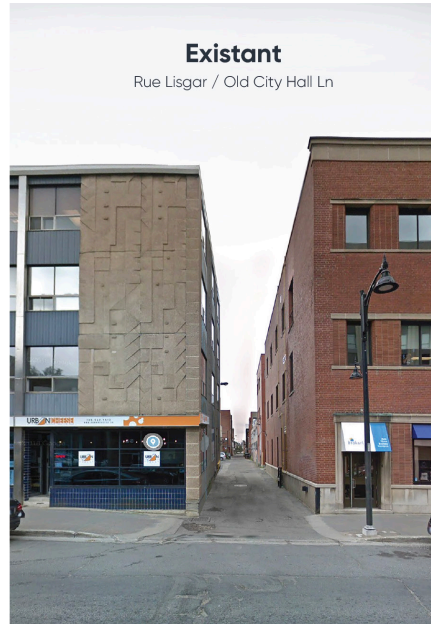
“Inspiré des tapis de lichen, le pavage des Sous Bois amène un geste sur l’ensemble du centre-ville. **L’hiver, les motifs sont projetés subtilement en révélant les délicatesses de la forêt boréale.**”



Hiver



Été



Existant

Rue Lisgar / Old City Hall Ln

1478 URBAN CONSTELLATION

Gaël Biache / Elise Dalmasso

STUDENT CATEGORY - HONOURABLE MENTION

“The lights are now limited, we land in the grass. **Tonight, everyone in Sudbury hopes to see that famous shooting star shower again.** It has opened their eyes to the potential of their city, to its landscapes and its unique environment. Waking up the day after the shooting star shower, nothing is the same as before.”



1.5 PHASE REVITALIZATION EFFORTS

- Recognize that sustainable development does not occur overnight;
- Implement a plan that unfolds and evolves over time in response to changing climates, funds, and management;
- Consider what the next major milestone in the city's greening narrative is, and what milestones are needed to realize this;

6752 RELOCAL

Michelle Blom / Rane Leung / Preetika
Balasubramanian / Michael Szilagyi / Paul Hicks

“The implementation of the Relocal proposal and its interventions is expected to take place over a planning horizon of 15-20 years and is intended to be: iterative; democratic; and transparent. The implementation of the initiatives in the Relocal plan will be organized with a view prioritizing the development of a renewed relationship between the community and the Downtown and the development of a new identity and profile, while larger and more costly capital projects can be prioritized later in the implementation strategy to allow for budgeting, funding applications, and the identification of partners and additional revenue streams to be created.

Implementation of this plan will depend on programmes and resources from all levels of government, including private sector and community, and will require a phased process, with systems in place to carry out periodic impact assessment.”

Implementation Strategy



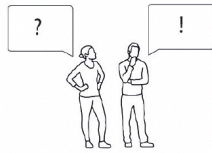
4575 **SUDBURY'S LIFELINES**

Teresa Arana Aristi / Dominika Misterka / Emeline Lex
/ Fernando Gonzalez-Camino / Marcin Zebrowski

“The proposal seeks to encourage citizen involvement in the process of Sudbury’s transition of the downtown core. The community engagement plan establishes several city-specific engagement strategies.”

COMMUNITY ENGAGEMENT STRATEGY

participatory design guidelines for the Sudbury Greater region



phase 01 communication plan

- + progress-to-date, attractive information about the transformations in the city
- + detailed information about key milestones distributed to all active participants and stakeholders
- + openness to the dialogue with the citizens



phase 02

city-wide and site-specific engagement of the citizens

- + citizens are included while identifying the design potentials, challenges, and barriers in the city
- + development strategies, site-specific plans, and revisions co-designed together with citizens
- + assured representation of various groups of citizens (incl. indigenous and francophone communities)



phase 03 closure

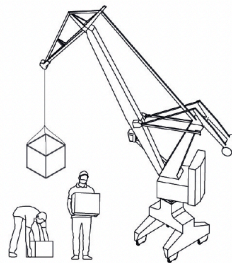
- + communicate that the process (or each step) has achieved its completion
- + evaluate the process to identify successes and shortcomings, communicate the results to the citizens
- + make sure that affected communities are informed of process outcomes

SOUNDS GREAT! BUT HOW TO IMPLEMENT IT IN SUDBURY?

some examples from the action catalogue



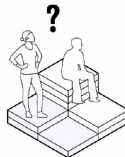
- 01** Use art installations made by local artists as physical platforms for communication about the transportation of the Greater Sudbury



- 02** Build a large-scale model of future Sudbury together with the citizens. Display the results in one of the key spaces in the city, for e.g. in the Community Centre or in the Junction



- 03** Involve the McEwan School of Architecture. Project courses can have their design sites in the city. Engage some of the students in the transformation processes



- 04** Introduce street prototyping while designing some of the new laneways - build the temporary interventions together with the citizens! Test and observe how they are used & adapt the final design to fit the tests



- 05** Promote the regional development strategy, the "Green Loop" by organizing trips and hikes to nature places around the Greater Sudbury

3802 NORTHERN TRACTION

Zain Karsan / Nathalie Bellefleur

OPEN CATEGORY - HONOURABLE MENTION

“This phase is about sharing a collection of urban gestures and inviting the public to respond through a collaborative digital platform: an app. We envision an active community discussion board to gather asynchronous feedback from the public, and for the community itself to propose their own gestures. Online or offline, city making is a conversation that occurs through urban gestures. Those gestures that gain traction are 3D printed and exhibited on a physical model for public view digitally and in person. The aim of phase 00 is to begin to understand Northern Traction and define the culture of Sudbury.”



Public Market



A grand CLT arcade for Memorial Park to host regular farmers markets. Safe commercial spaces offer a resilient way to chart a post Pandemic world.

#publicspace #farmersmarket #outdoorvenue #CLT



0322 **SÈVE**

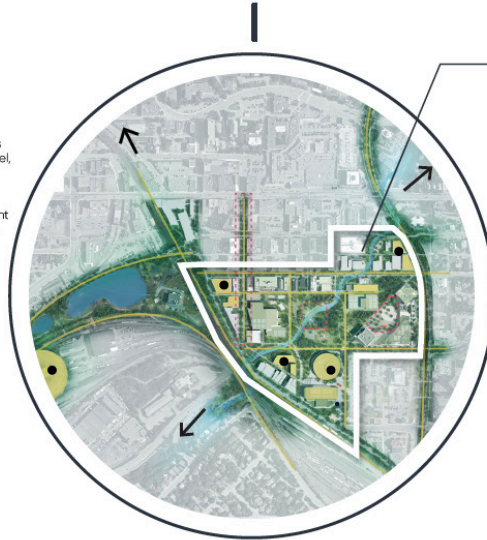
Karyna St-Pierre / Julie Parenteau / Émilie Labrousse
/ Pierre-Yves Diehl

OPEN CATEGORY - WINNING PROPOSAL

“Une priorité est donnée au développement du coeur urbain dédié au piéton. Il est en constante évolution et tissage avec son territoire où viennent se mêler rivière, paysage, culture et citoyenneté.”

2025

- Nouvelles constructions bâties (culturel, éducatifs, résidentiel)
- Stationnement en souterrain
- Réseau de ruelles piétonnes
- - - Activation citoyenne

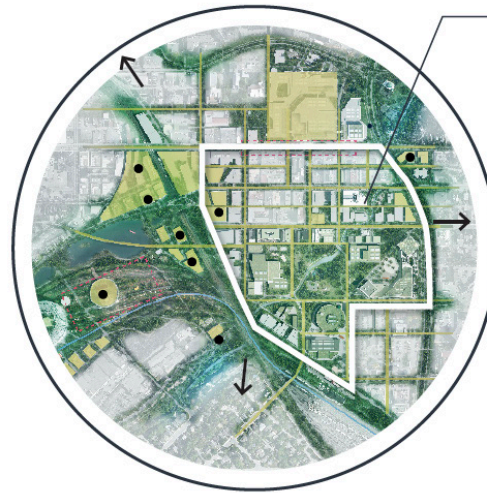


1950m
périètre

Mise en place d'un coeur dédié au piéton, vivant et articulé autour de la rivière et d'espaces paysagers.

A l'Ouest, la nouvelle Arena s'installe aux abords des bassins de biorétention.

2035

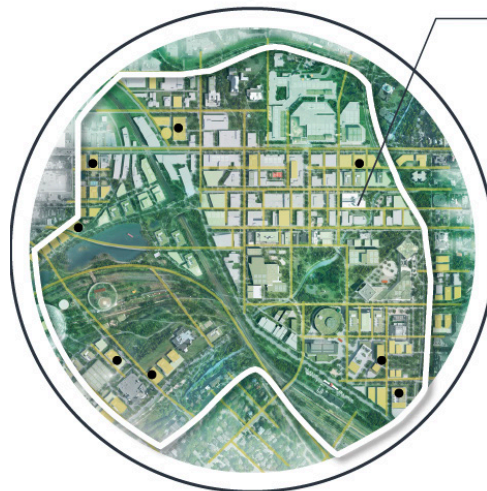


2150m
périètre

La trame urbaine se densifie à travers les corridors verts et bleus, et de nouvelles constructions à efficacité énergétique.

La réhabilitation ferroviaire laisse place à l'agriculture urbaine comme levier de biodiversité.

2050



4200m
périètre

En 2050, tout le grand Sudbury ne fait qu'un avec son territoire et ses citoyens. Parcouru par un réseau actif dense, la ville au caractère nordique fait place à la biodiversité, à l'innovation énergétique, et l'appropriation citoyenne.

REIMAGINE URBAN SPACES





CHAPTER 02

REIMAGINE URBAN SPACES

Chapter 02 highlights six explorations for reworking urban spaces to become attractive spaces for new inhabitants by maximizing efficiencies, providing opportunities and enabling innovation. Each of the proposed interventions considers an existing facet of the city and imagines how it could become a catalyst for urban renewal and revitalization.

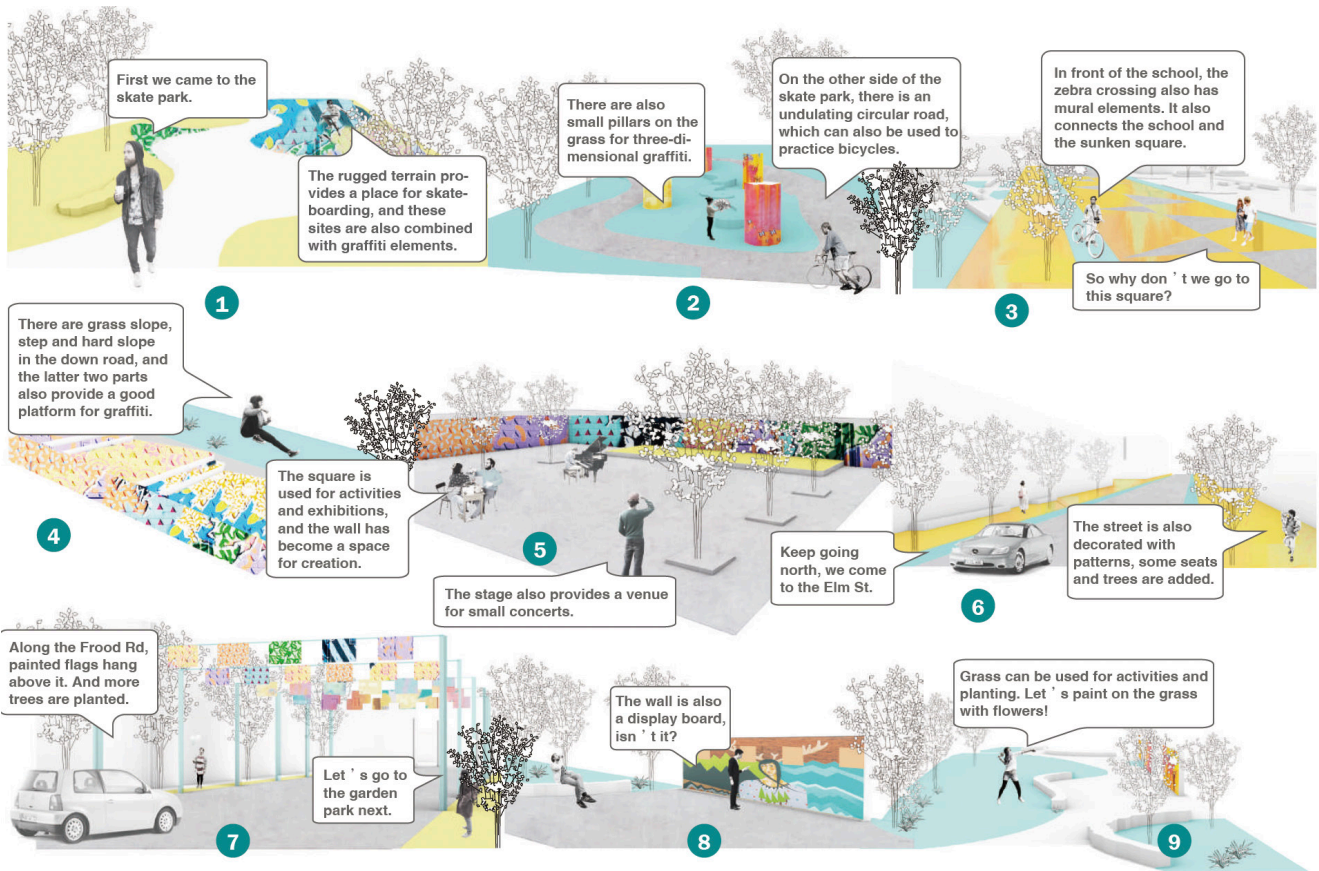
2.1 BEAUTIFY THE DOWNTOWN CORE

- Concentrate revitalization efforts in the downtown core - with an emphasis on enticing businesses and inhabitants to the area;
- Embrace artistic expression as a means of beautifying spaces that would otherwise be unattractive such as facades, vacant lots, and alleyways;
- Consider lighting, planting, and paving strategies as means of fostering a downtown core that is aesthetically pleasing to the eye;

¹⁹⁹⁶ LIVE WITH MURALS

Zheng Zhou

“I hope that after the renovation of the site, people can still park conveniently if they want to choose to drive, but they will be more willing than before to choose to go out on foot and enjoy the street space. Cyclists can also ride more safely on the road. There will also be more open spaces in the city, where people can choose to exercise, perform and hold exhibitions in parks. The elements of murals have also been extended to streets and parks. Some graffiti will also welcome residents to improvise. These graffiti are not permanent, some walls can be reused. **Murals can be painted not only on the walls, but also in life.** In fact, this can also be extended to other activities, such as graffiti relay creation, or relay in the form of stories is also very interesting.”



4245 **BOLD & BEAUTIFUL**

Bryan Jian Hao Goh / Charmaine Chua Wei Ying /
Chun Ho Christopher Wong / Nabhatsorn Na Thalang /
Rachel Yi En Chiam / Tessa Hui Zhi Tan

PEOPLE'S CHOICE AWARD

“New ground-up centre point of Sudbury. Built on the old railands, it refreshes and enhances the public space. **It serves as a canvas for art and culture to flourish and a reminder of Sudbury’s industrial past.**”



SÈVE

0322

Karyna St-Pierre / Julie Parenteau / Émilie Labrousse
/ Pierre-Yves Diehl

OPEN CATEGORY - WINNING PROPOSAL

“Les ruelles expérientielles deviennent des zones d’explorations piétonnes. Ces espaces enveloppants et identitaires unissent un réseau de circulation fluide.

Animées, éclairées, investies de culture, d’art et de végétation elles sont des lieux à découvrir.”



Existant

BÂTIMENT EXISTANT

NOUVELLES
CONSTRUCTIONS

12

11

10

2

1

3

4

5

6

7

8

9

5

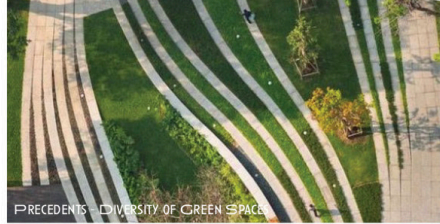
2.2 REPURPOSE DERELICT LANDS

- Identify spaces that compromise the vitality of the urban setting outside of peak hours such as expansive parking lots, rail yards, vacant lots, and alleyways;
- Work towards stacking, consolidating or else relocating street-level spaces that inhibit community development, and could instead become smaller vibrant community spaces;
- Consider re-pedestrianizing said spaces by introducing public spaces, pop-up events, community gardens or adaptable programming;

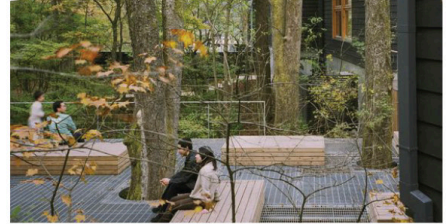
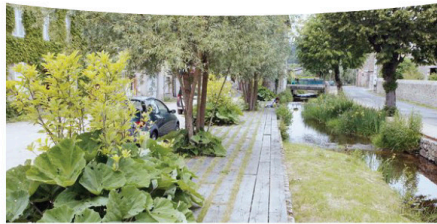
0582 REWILDING

Sahana Dharmaraj / Jenna Lamb / Anastasia Renaud
/ Taylor Um / Kevan Cress / Shannon McMillan

“Starting with the downtown railyard, which was previously a manifestation of physical and social division through the heart of the city, Rewilding continues Sudbury’s narrative of environmental transformation through a new phase of cultural metamorphosis. The design nodes along the Rewilded network feed the railyard to provide for unprecedented connectivity through a system of green and winter spaces that permeate the city. Further, **the nodes provide a diversity of spaces through both formal and informal design by suggesting activities that appeal to the Northern lifestyle,** while leaving enough to the imagination to allow for the design to grow or cater to the emergence of unimagined needs.”



PRECEDENTS - DIVERSITY OF GREEN SPACE



0322 SÈVE

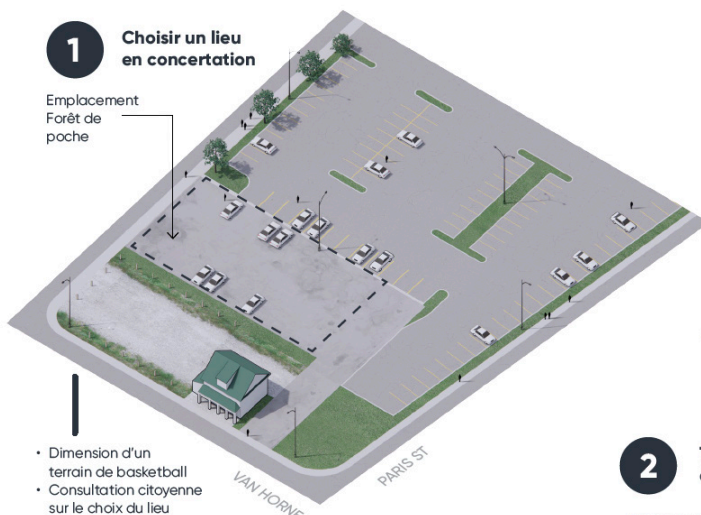
Karyna St-Pierre / Julie Parenteau / Émilie Labrousse
/ Pierre-Yves Diehl

OPEN CATEGORY - WINNING PROPOSAL

“Tous les bienfaits de la forêt boréale dans une petite pochette urbaine. **Des espèces indigènes concentrées forment un îlot de fraîcheur régénérateur.** Il permet d’absorber les eaux de ruissellement. Cet espace naturel foisonnant de vie et de biodiversité présente un fort potentiel éducatif pour la communauté. Les forêts de poche se développent jusqu’à 10 fois plus rapidement que les zones de plantations d’arbres régulières.”

1 Choisir un lieu en concertation

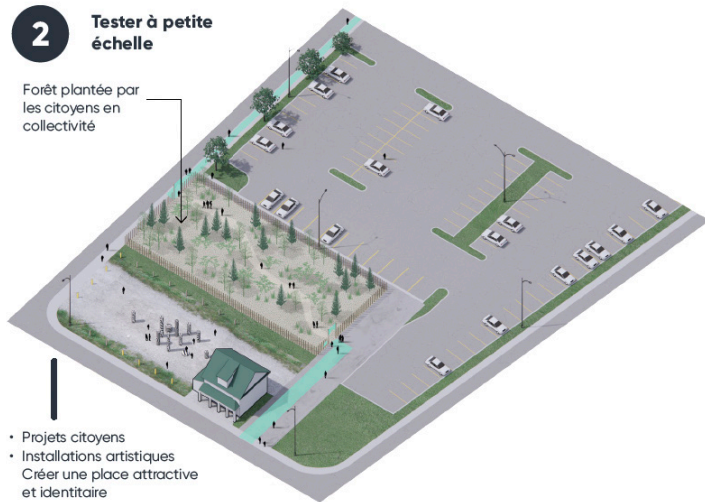
Emplacement
Forêt de poche



- Dimension d'un terrain de basketball
- Consultation citoyenne sur le choix du lieu

2 Tester à petite échelle

Forêt plantée par les citoyens en collectivité

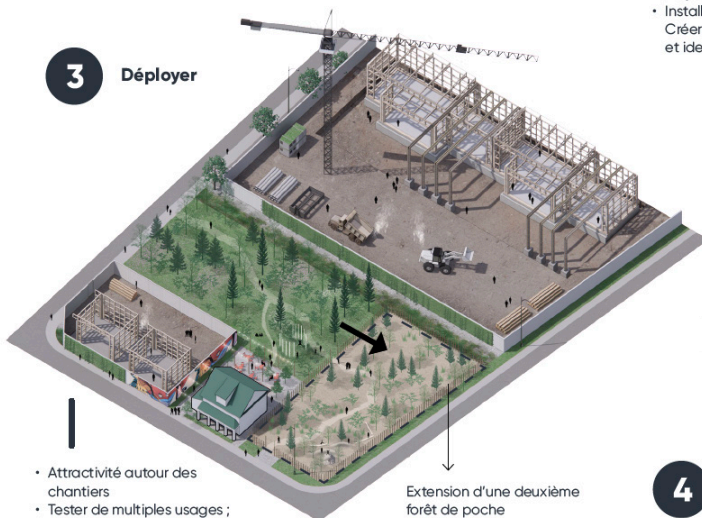


- Projets citoyens
- Installations artistiques
- Créer une place attractive et identitaire

3 Déployer

- Attractivité autour des chantiers
- Tester de multiples usages ; jeu libre, land art, murale, agriculture, projection cinéma plein air

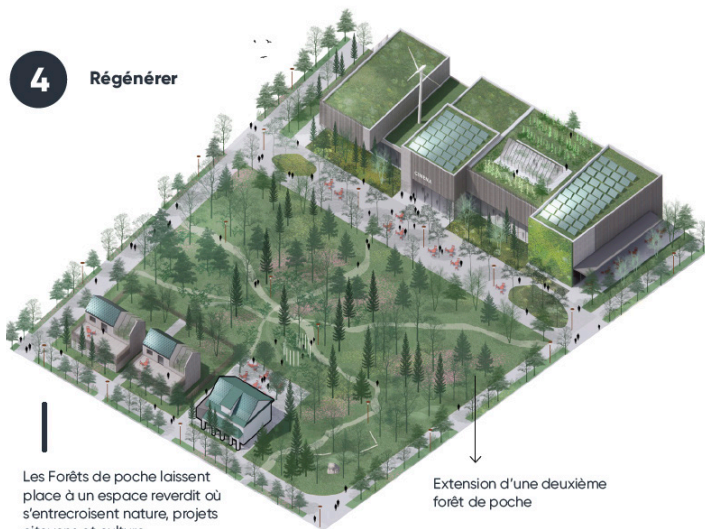
Extension d'une deuxième forêt de poche



4 Régénérer

Les Forêts de poche laissent place à un espace reverdit où s'entrecroisent nature, projets citoyens et culture

Extension d'une deuxième forêt de poche



3184 **SUDBURY ARCHWAY PLAN**

Tatiana Estrina / Lena Ma

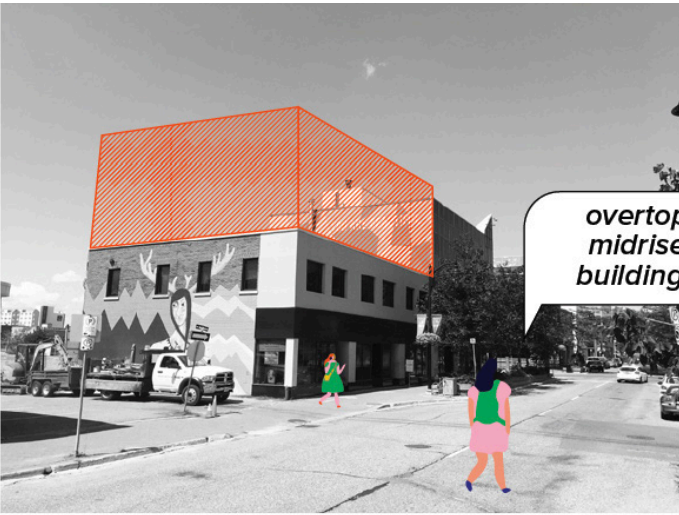
“The Sudbury Archway Plan aims to rejuvenate the urban landscape of the city in response to its modern day needs. **To mediate the current issues of social segregation and lack of urban density, this new urban design introduces a conscientious plan involving intensification of the city core by augmentation, infill and connective bridges.** In addition, it brings about new building typologies and a restructuring of the transportation systems, making Sudbury’s downtown not only more connected to its suburban areas but also making it a more accessible destination for visitors from other Canadian cities.”



infill areas between buildings



filling unused parking lot spaces



overtop midrise buildings



unappealing back facades of buildings

2861 THE NEW NICKEL

Sarah Ives / Don Toromanoff / Ailsa Craigen / Kristen Sarmiento / Madina Koshanova / Rita Wang / Azad Chichmanian / Lilia Koleva

“The CP railway situated at the center point of Sudbury’s downtown core, presents itself as more of a barrier than as a means to connect and transport city dwellers. The Greenscape suggests removing a large portion of the train tracks and leaving a few commuter train lines to connect adjacent towns. **After removing derelict tracks and railroad ties, the large petal-like spaces will become the green lungs for downtown Sudbury. The goal of the reimagined rail lands is to promote public and communal spaces:** community allotment gardens for growing food, recreational trails, diverse local plant species, connectivity and storm water management. The existing rail lands are bioremediated using local and indigenous plantings in partnership with Laurentian Conservation Area, Laurentian University, and Science North to foster environmental stewardship and knowledge amongst the community.”



5853 SADBURY2050

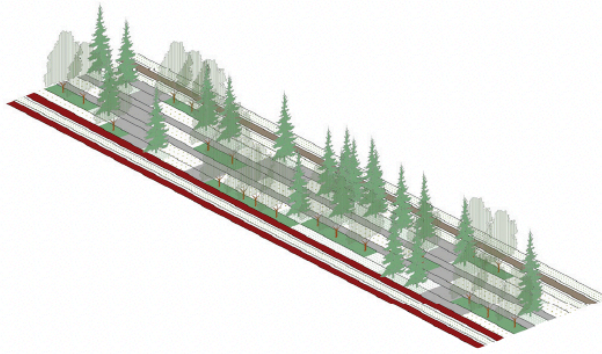
Scott Getz

“I propose converting the Elgin Street rail yards into a vibrant, multi-faceted public green space by remediating the soil with a passive planting strategy. This is not only cost-effective but it also creates an evolutionary park experience for the community. **As the plantings shift from early to late successional stages the character of the park is always changing, offering new colors, animals, and experiences through all four seasons.** The strategy requires minimal maintenance efforts as the vegetation absorbs and metabolises the toxins in the soils.”

Stage 4

Grow!

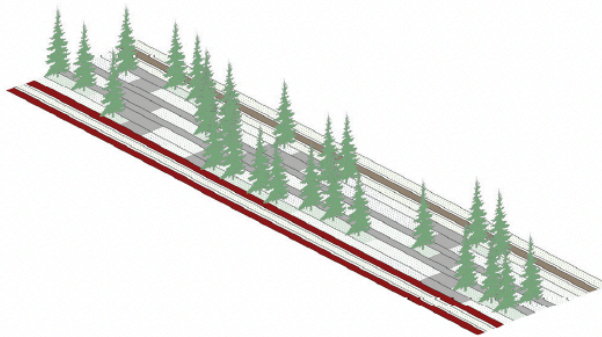
As the garden matures into late successional plant species it is evident the soil has been cleaned of all toxins. The park is functionally ecologically offering critical habitat for flora and fauna.



Stage 3

East-West Connection

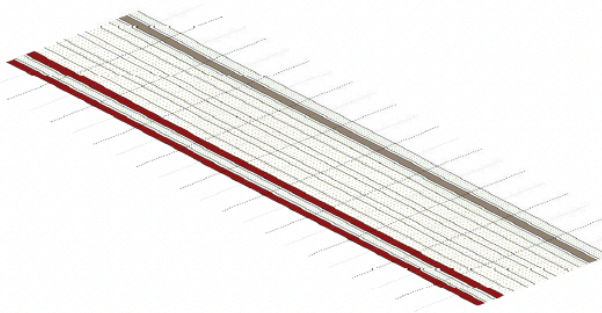
As early successional vegetation begins to populate the site because of cleaner soils and water supply, paths connecting east and west can be installed. If possible, I propose repurposing mine-tailings from surrounding mines to create a material and aesthetic connection to Sudbury's industrial and geological history.



Stage 2

Planting

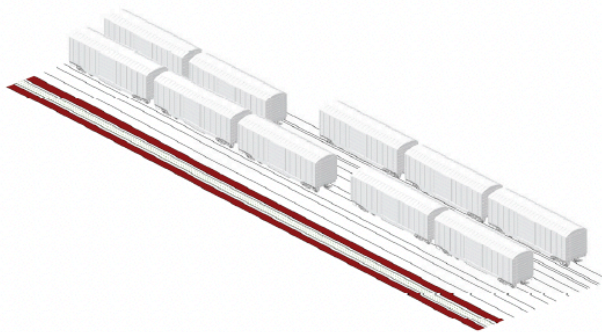
Remediation of the site's toxic soils begins with an initial planting of vegetation like blue sheep fescue, *Salix viminalis*, *Brassica juncea*, and *Sorghastrum nutans*. These plants have been used in similar conditions where copper and nickel mining is prevalent to great success. They also offer fodder for wildlife and only require being cut back once a year.



Stage 1

Activation

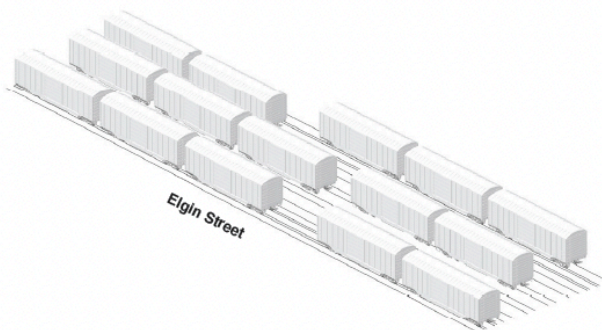
Rather than halt rail operations of the rail yards outright, I propose converting the first three rail lines west of Elgin Street into a bicycle greenway that increases accessibility between the City Center and Ramsey Lake. This allows time for the relocation of current rail operations to Sprecher as outlined in Option B1 of the 1972 Rail Relocation Study.



Current State

A Divided City-Center

The Elgin Street Rail Yards has been critical to the creation of Sudbury. Although, playing a critical role in the city's growth it divides Sudbury in to the East and West. Converting this area into a park system can connect the city in a novel ways by offering unique programming and beautiful spaces for community gatherings while restoring critical natural systems like stormwater filtration in the city's center.



2.3 CONSIDER ADAPTIVE REUSE

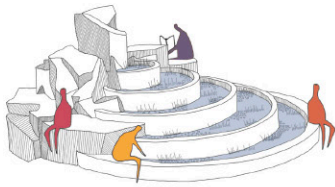
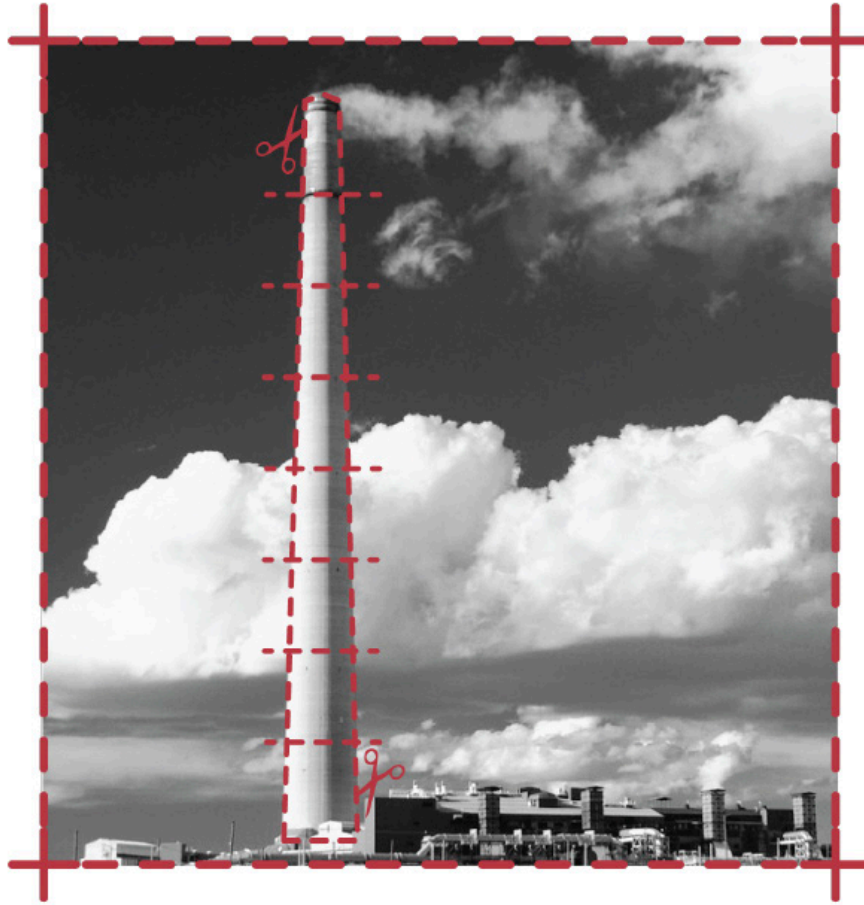
- Preserve heritage buildings by encouraging the restoration of existing landmarks rather than their demolition or decay;
- Recognize that the most sustainable building is the one that already exists;
- Develop a broader strategy for the repurposing of buildings that is ultimately for the benefit of the community;

5213 RE-STITCHED

Aidan Lucas / Maeve Macdonald

STUDENT CATEGORY - WINNING PROPOSAL

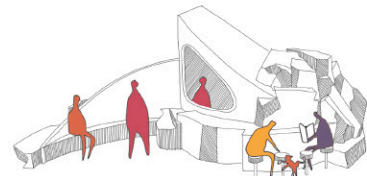
“We have designed “Superstack Follies” that would be dispersed throughout the downtown, made from the Superstack (a Sudbury icon that is going to be torn down in the future). **These follies are designed as social hubs within the downtown.** People working, learning or visiting various districts can meet and gather on these forms. The follies have different functions: water filtration, experimental agriculture, community murals, movie projections, cafes and seating spaces.”



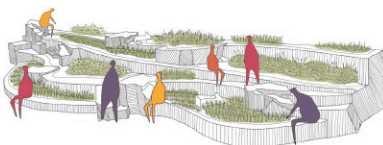
1 WATER FOLLY
naturally cleans day-lit creek water



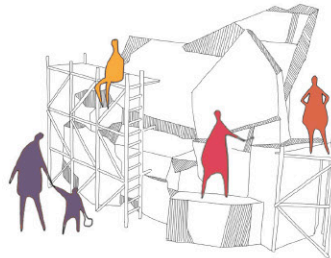
3 CANVAS FOLLY
a canvas for murals and film projections



5 CAFE FOLLY
a multi-season food truck



2 GROWING FOLLY
community gardens + local flora



4 INSTALLATION FOLLY
a base for architecture installations



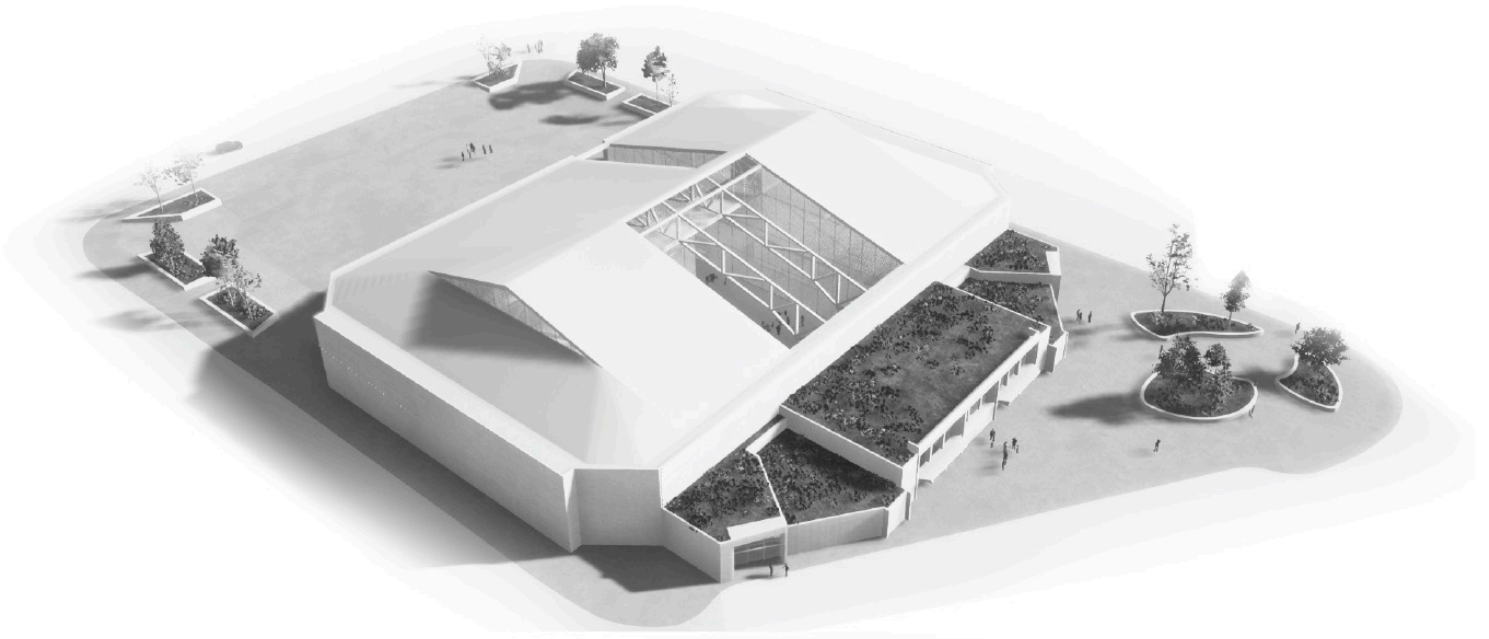
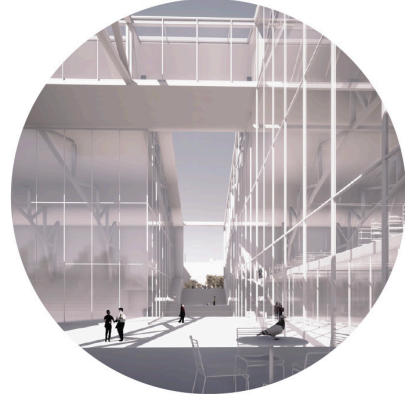
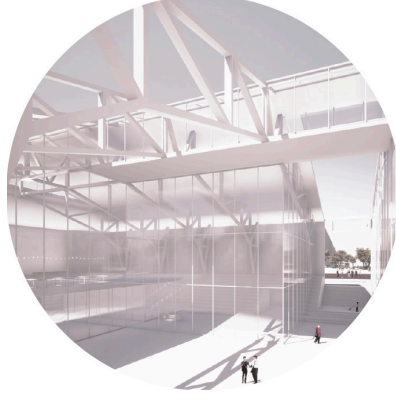
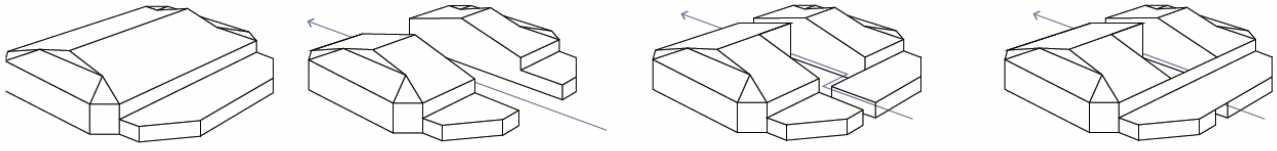
6 GATHERING FOLLY
sheltered seating for all seasons

7546 L'ANCRAGE

Gabrielle Loignon-Lapointe

“Le projet proposé vise la réhabilitation de l’aréna en bibliothèque municipale et atelier communautaire. Un tel programme conjoint permet de partager une vocation pédagogique ainsi qu’un dialogue entre l’apprentissage théorique et pratique.

L’atelier met à la disposition de tous des espaces de création, de partage et d’entraide. Il assure l’accès à des outils, des logiciels et des technologies, mais aussi à des matériaux recyclés et à des personnes ressources.”



2.4 DESIGN REGENERATIVE BUILDINGS

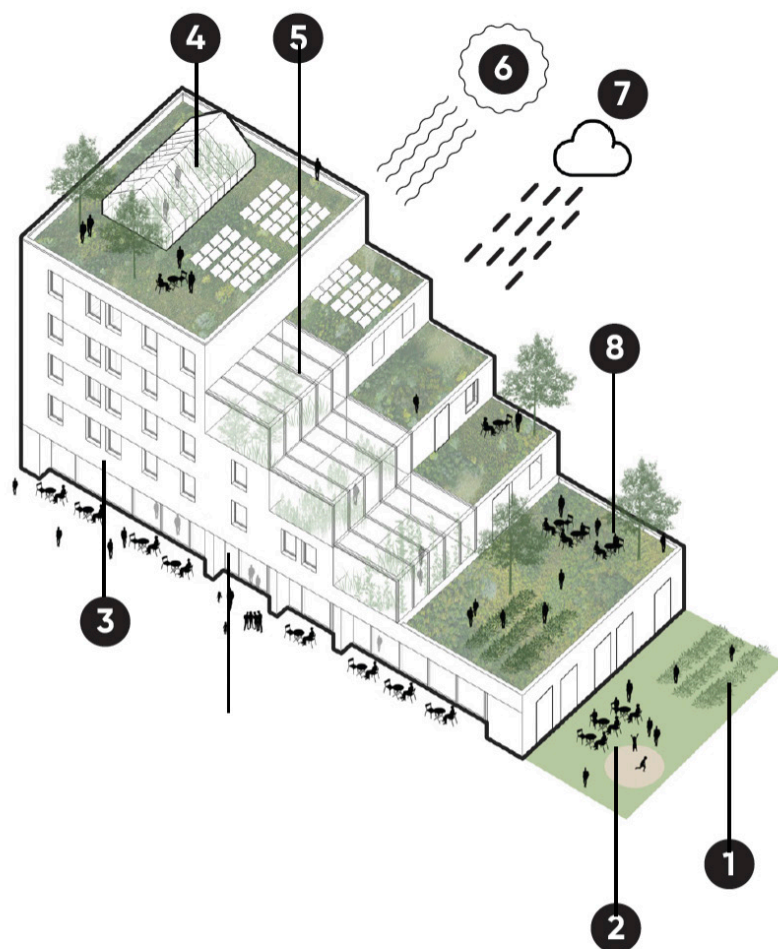
- Implement policy that encourages new builds to be active regenerators in terms of habitat, energy, waste, water, and food;
- Create buildings that have a net-positive impact on the environment they occupy, both in their designs and in their operations;

0322 SÈVE

Karyna St-Pierre / Julie Parenteau / Émilie Labrousse
/ Pierre-Yves Diehl

OPEN CATEGORY - WINNING PROPOSAL

“On voit apparaître de nouveaux types d’habitations mixtes répondant aux enjeux d’aujourd’hui et de demain. Des milieux de vie autonomes en énergie et faisant place à l’agriculture urbaine avec des serres 4 saisons et des toits verts. Ce sont des espaces intergénérationnels, inclusifs et rassembleurs. **Ces nouvelles constructions sont conformes aux exigences et aux valeurs du Living Building Challenge.**”



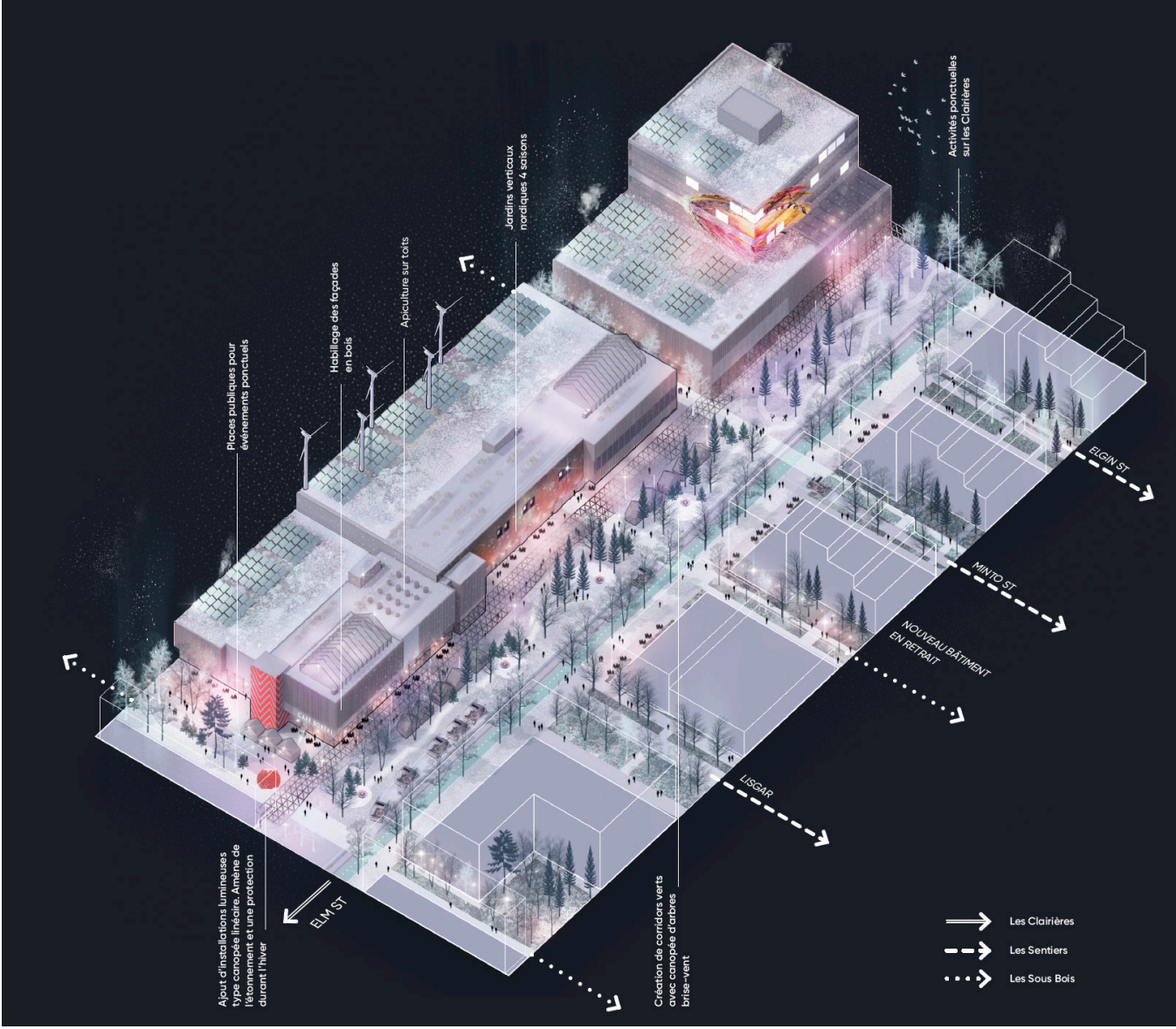
- 1** Jardins partagés
Potager pédagogique
- 2** Espaces collaboratifs
- 3** Constructions bois en escalier pour
ensoleillement maximal
- 4** Serre collective sur le toit
- 5** Serre privative
- 6** Énergie solaire
- 7** Récupération des eaux de pluie pour
potagers
- 8** Espaces de co-working

0322 SÈVE

Karyna St-Pierre / Julie Parenteau / Émilie Labrousse
/ Pierre-Yves Diehl

OPEN CATEGORY - WINNING PROPOSAL

“La certification et la philosophie de living building challenge élève les standards en matière de développement durable, de conception et de construction de milieux de vie. **Nous voulons faire du cœur de Sudbury un modèle de cette vision novatrice, tant à l'échelle de l'habitat, que du paysage et de la trame urbaine elle-même.**”



2.5 ENCOURAGE HOUSING DENSITY

- Increasing the housing density in currently populated areas encourages the growth and vitality of existing communities, while accommodating a more diverse socio-economic demographic - particularly in the core;
- Consider what creative workspaces, innovative industries and tax strategies are needed to complement housing in order to attract new people to the downtown core;
- Densify the downtown core as a means of supporting the existing businesses there, as well as to increase safety;

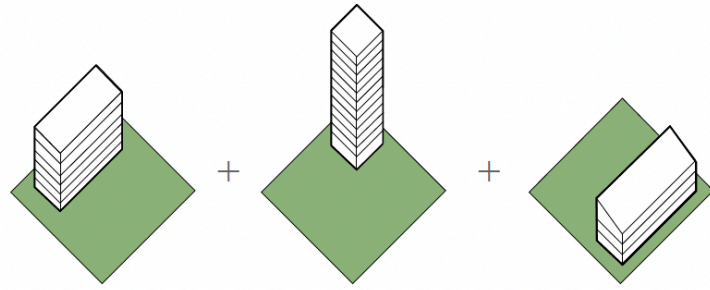
0351 A COLLECTIVE CITY

Jesse Martyn

STUDENT CATEGORY - HONOURABLE MENTION

“Superblocks are equipped with a variety of housing scales and semi-private community green space. They can be adapted to suit existing neighbourhoods by closing off local streets and blurring public—private boundaries.

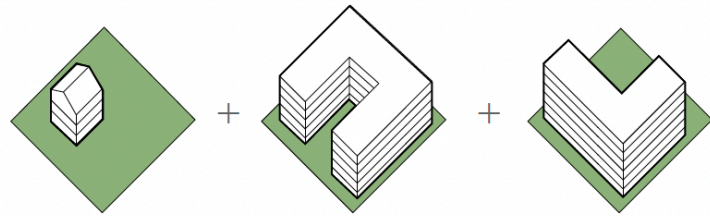
The intention of the superblock is to develop micro-communities geared toward shared ownership rather than individualism.”



*Mid Rise
Slab*

*Mid / High Rise
Point Tower*

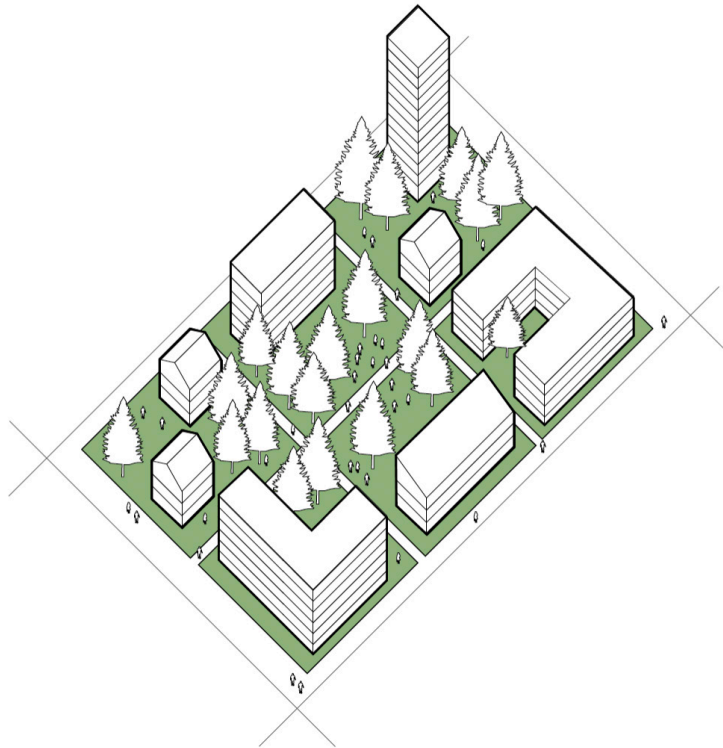
*Low / Mid Rise
Town*



*Low / Mid Rise
Gable*

*Low / Mid Rise
U*

*Low / Mid Rise
L*

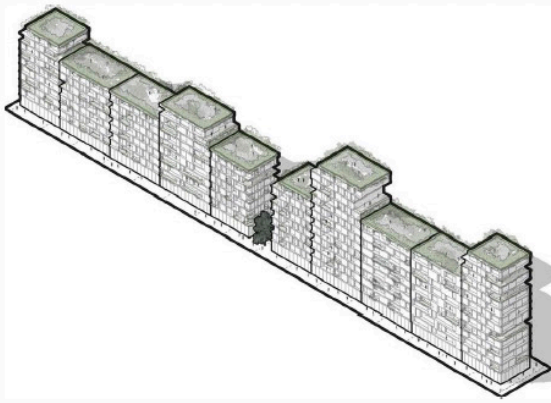


Residential Mixed-Use Superblock

2508 **COMPA-CITY**

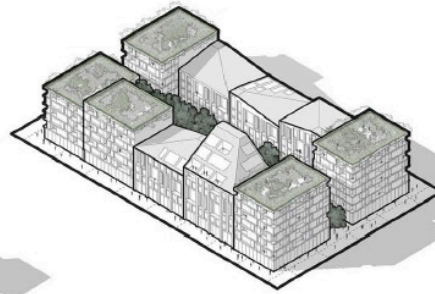
Juan Jacobo Molina Restrepo / Angelica Herrera /
Juan Camilo Sanchez / Tomas Santacruz / Nicole
Sperling / Catalina Vasquez

“Third, get rid of all the parking spaces in the center and fill these spaces with new building typologies used for housing and commerce. This will create a compact, dense city of exchanges that will attract new residents, whether they are students, young professionals, families or the elderly who wish to live in this new center. **Furthermore, it will complement the new green heart by generating new housing and mixed-use areas along the old railroad that will attract new inhabitants to the city.**”



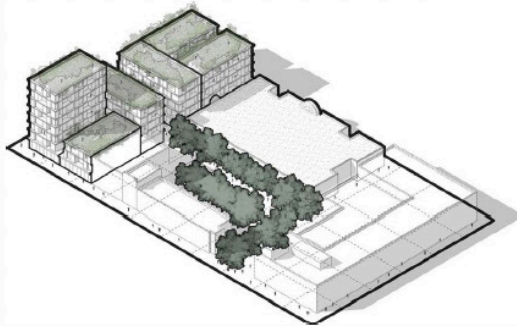
Park Border

Mixed-use, affordable housing, commercial ground floor.



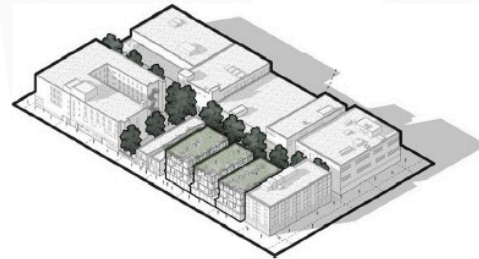
Expansion - Open Block typology

Affordable housing, commercial ground floor. Semi-private inner block, Mixed-used border



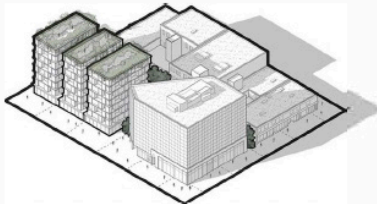
Green house Spaces

Mixed-use, affordable housing, commercial ground floor and public greenhouse areas.



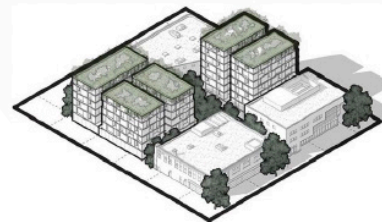
Infilling - Continuous Typology

Mixed-use, affordable housing, commercial ground floor and public greenhouse areas.



Infilling of Isolated Typology

Mixed-use, affordable housing, commercial ground floor. Semi-private inner block



Infilling- Park Border

Mixed- use, Student housing and commercial ground floor

2.6 OFFER ALTERNATIVE TRANSPORTATION

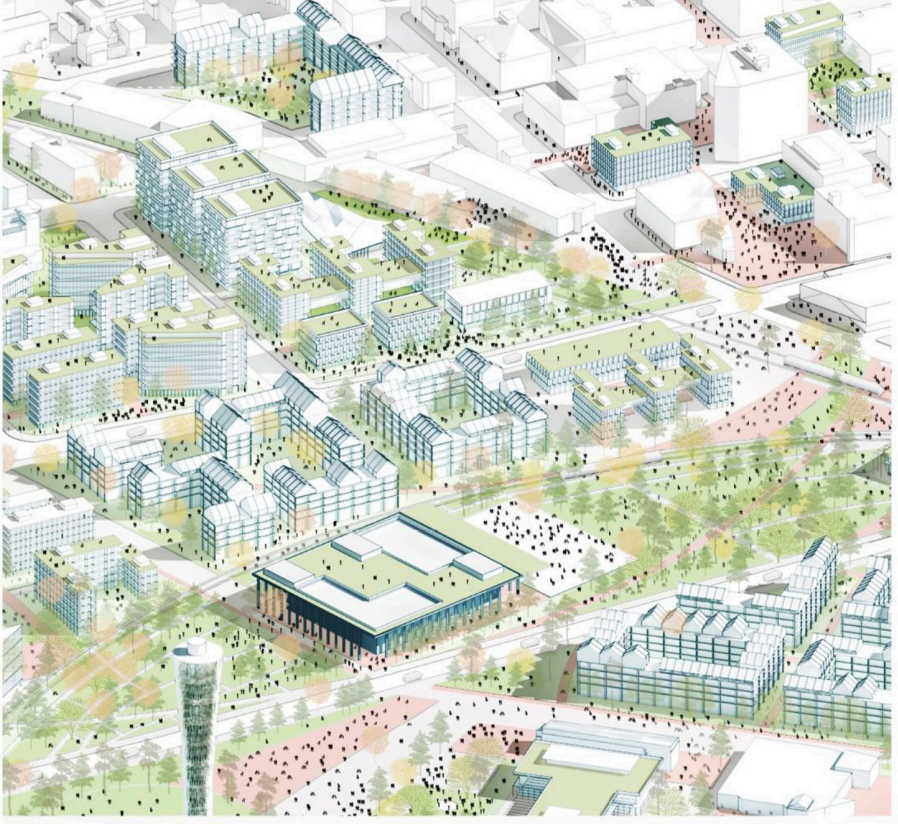
- Decentralize the dependency on cars that has led to pervasive vacant lots in downtown cores;
- Support a pedestrian lifestyle by offering safe sidewalks and paths, and by providing walkable cities where services and resources are concentrated in highly populated areas;

0946 DOWNTOWN-THE HUB

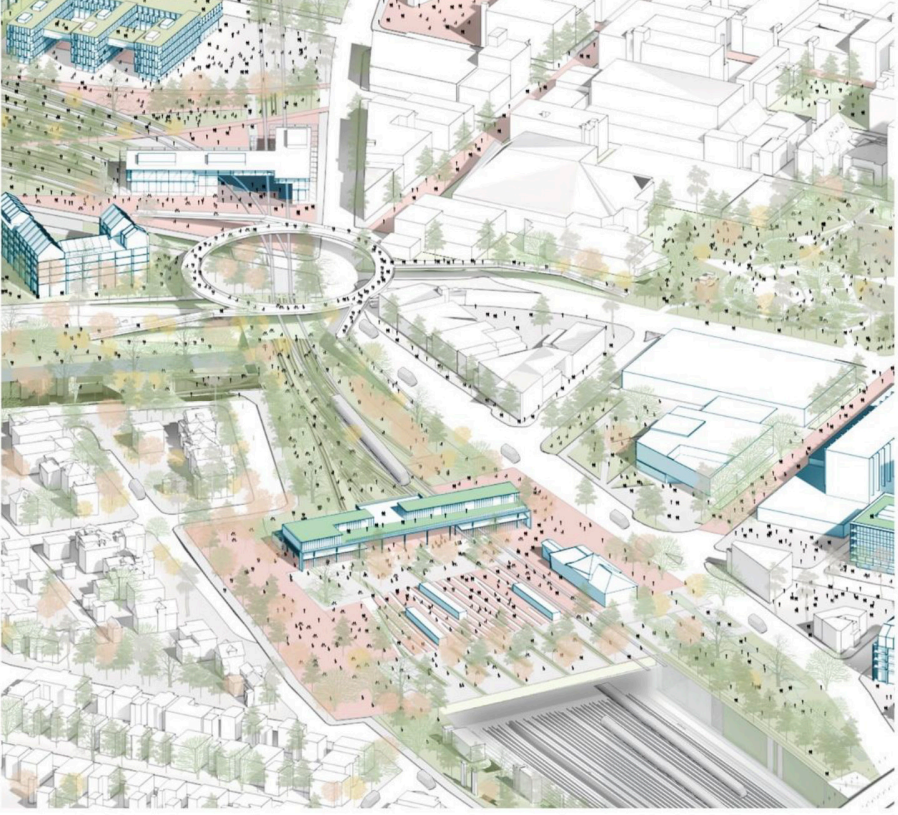
María Camila Leal Acevedo / Juan Pablo Benavides
Soto / Paula Andrea Cufiño Zamora / Sebastian
Gomez Munar

“This expanded centre will change the relationship among the sprawl zones which have been isolated from the Downtown. Using the huge industrial land, new mixed-use zones are created to attract more people and workers to the centre. This hub includes living areas, an extended university campus with commercial and research-related zones, cultural and recreational spaces and a new agricultural research complex. **All of these, connected by a sustainable transportation system as a new extended trail network, bike and bus lanes, and tram rails.**”

Campus Extension + Railway Park + Living Areas + Greenery Tower



Sudbury Intermodal Station



0582 REWILDING

Sahana Dharmaraj / Jenna Lamb / Anastasia Renaud
/ Taylor Um / Kevan Cress / Shannon McMillan

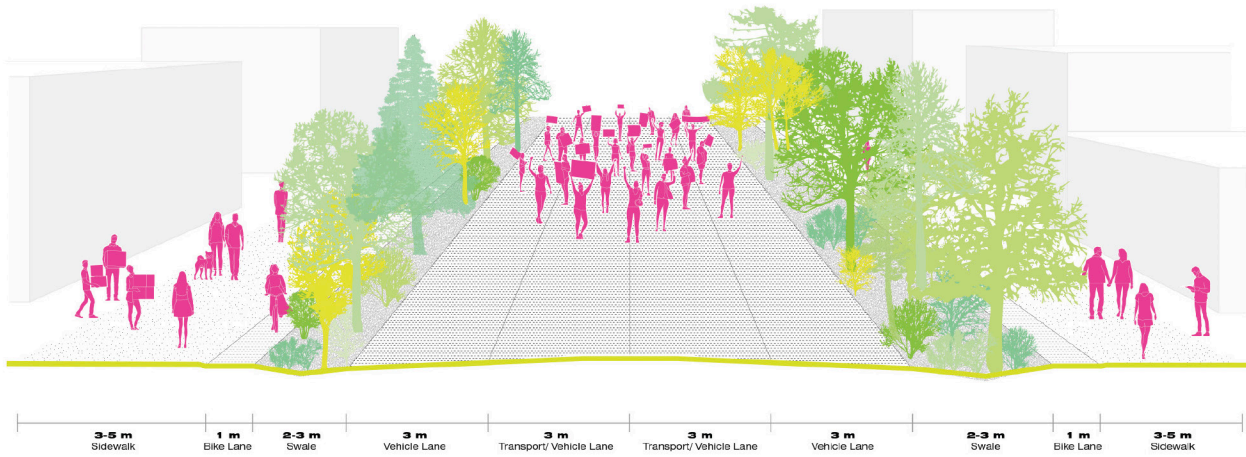
“The use of the railway lands creates corridors that permeate the city, creating an opportunity for unprecedented connectivity.

By using these corridors for different methods of transportation, we are reshaping how people move through the city. The use of alternative methods of travel - such as snowmobiles, have previously not had a place in the urban landscape. Through the development of two distinct path types that traverse the former railway corridors; a ‘fast’ path and a ‘slow’ path, a diversity of transportation methods are encouraged. The ‘fast path’ is for anyone moving between 10-40 km/h, and can include running, biking, skateboarding, snowmobiling, skating, rollerblading, etc. The ‘slow path’ is for activities with speeds less than 10 km/h such as hiking, jogging, dog-walking, or biking with children.”

PATHWAYS



MEDIUM STREETS



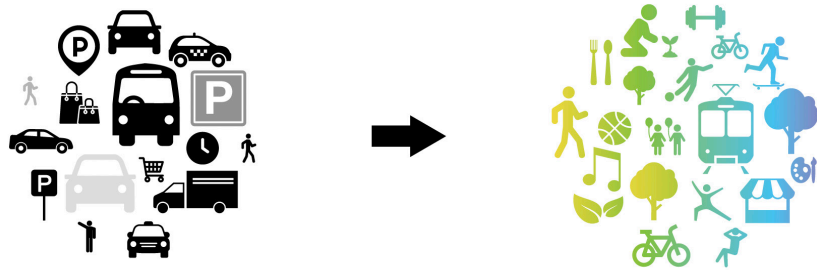
LARGE STREETS



7492 **SUDBURY2050**

Claudio Araya / Arda Ertan Yildiz / Dominika Weronika Bugajska

“In order to improve the urban core and enable it to capture future necessities, a new mixed-used zoning model is established. **Knowing that pedestrian spaces increase potential market situations, a dynamic urban growth model needs to be developed to promote and support continuous growth.** To provide the needs and the preferences and flexibility of a vibrant city, the zoning model adapts to prospective usage that would be determined by the people’s needs.”



REVEAL GROWTH OPPORTUNITIES





CHAPTER 03

REVEAL GROWTH OPPORTUNITIES

Chapter 03 presents five explorations for introducing novel ideas into the design and operations of mid-sized cities. The proposals highlight specific interventions as well as broader processes, but are unified in their ambition to cultivate innovation, collaboration, and sustainable development in mid-sized cities.

3.1 CULTIVATE URBAN AGRICULTURE

- Invest in urban growing spaces to provide additional, year-round access to local produce;
- Continue to support local farmers and agricultural businesses;
- Consider rooftops and parking lots as spaces for new agricultural opportunities;

1478 URBAN CONSTELLATION

Gaël Biache / Elise Dalmasso

STUDENT CATEGORY - HONOURABLE MENTION

Protecting is: educate, study, manage, observe, limit, communicate, live. There are as many ways of doing things as there are buildings made in central Sudbury. These urban acupunctures are strategically placed. They are used to revitalize certain parts of the city but especially to raise awareness and anticipate the next phases. **Like seeds, these buildings begin to question the making of cities.** Sudbury becomes a playground for experimentation.



0322 SÈVE

Karyna St-Pierre / Julie Parenteau / Émilie Labrousse
/ Pierre-Yves Diehl

OPEN CATEGORY - WINNING PROPOSAL

“Un printemps septentrional, où pousse une ville d’hiver. C’est le retour de la rivière qui réapparaît pour accueillir les patineurs et les pédalos. C’est l’éclosion de coulées vertes et bleues qui traversent la ville pour en faire un poumon nordique. **Une saison fertile de solutions innovantes, de progrès et de développement durable. Des modèles novateurs d’habitations, d’agriculture urbaine et d’échelle humaine.**”



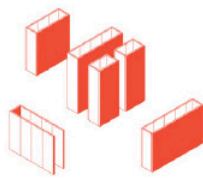
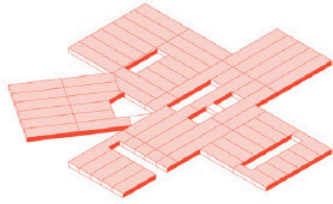
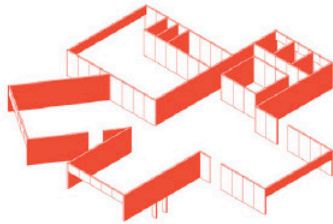
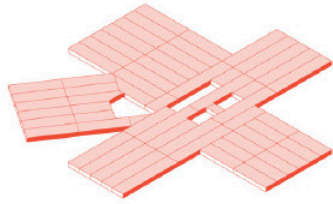
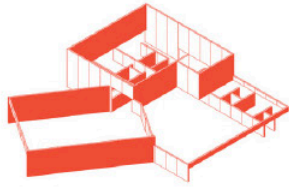
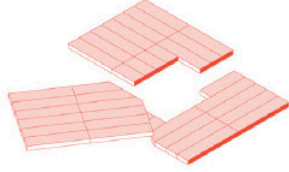
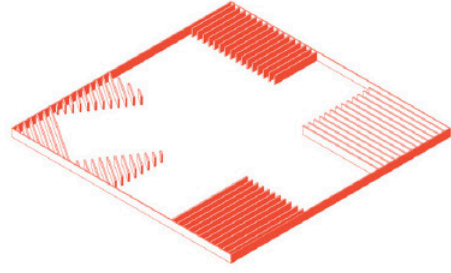
3.2 INNOVATE MASS-TIMBER INDUSTRIES

- Expand the use of mass-timber construction;
- Learn and cherish forests as a provider of several wealth streams;
- Support northern industries and promote regional and global trade;

4665 THE WOODS FELLOWSHIP

Alexander Cassini / Daniela Leon / Christopher Alton

“As an open-ended process, our intervention evokes a myriad of possible futures and a confrontation with the histories that have brought us to our current environmental crisis. In that these crises are married to environmental and economic dispossession, situating our analysis in downtown Sudbury provides a much needed context in which research into silviculture, until now largely speculative at the urban scale, can take root. In this proposal therefore we look to build out a method of learning from, and following, woods. **Using the lens of wood and its products to establish a new downtown for Sudbury, we critique ongoing colonial institutions, and propose envisioning an alternative weedy urbanism.**”



2861 THE NEW NICKEL

Sarah Ives / Don Toromanoff / Ailsa Craigen / Kristen Sarmiento / Madina Koshanova / Rita Wang / Azad Chichmanian / Lilia Koleva

“Historically, nearby timber mills in Sudbury were used for smelting processes and railroad ties. Wood is a renewable resource, a carbon sink, is less intrusive to the environment than traditional concrete or steel construction and can be quite beautiful when left exposed. **The Timberscape transforms an underutilized plot of land next to the former rail lines into a timber village including mid-rise, mixed use developments on a pedestrian friendly site.**”



CLT Village



Connection between Residents and Garden



Courtyards and Private Gardens



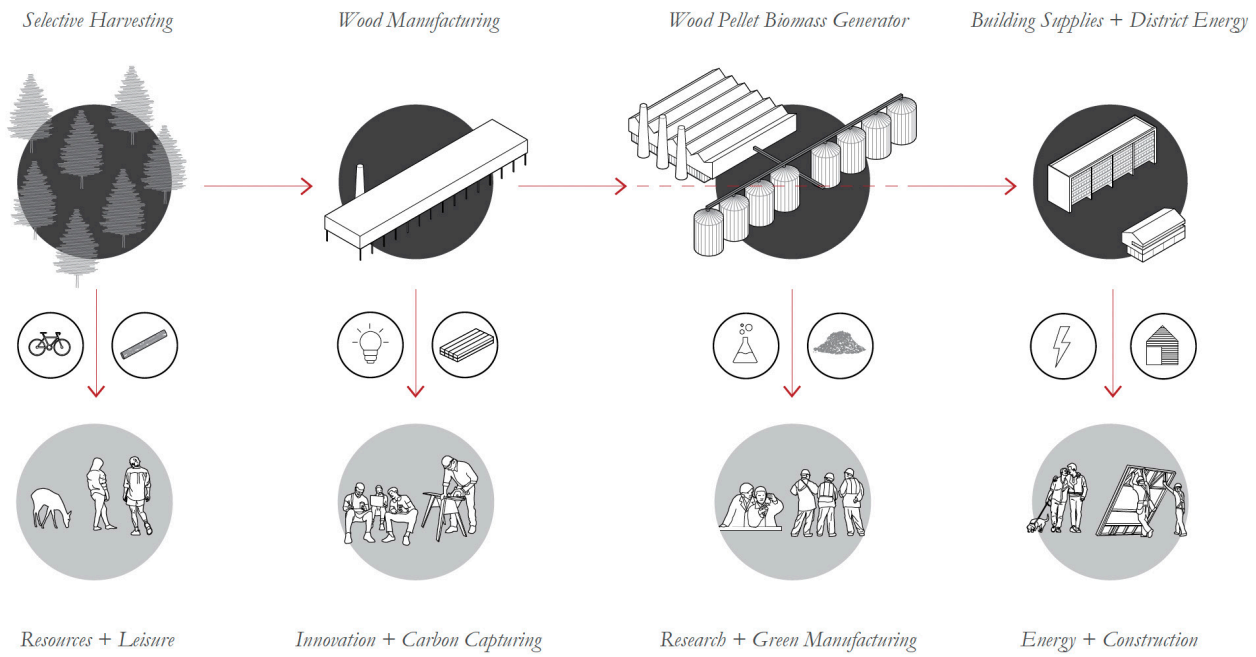
Bridge Connecting Neighbourhoods

0351 A COLLECTIVE CITY

Jesse Martyn

STUDENT CATEGORY - HONOURABLE MENTION

“An advanced wood processing facility can take advantage of selective wood harvesting paired with a maker space as an off chute of the school of architecture, acting as a place with common interests and reconciliation. The resulting wood pellets can be converted to biomass that supplies a local district heating system which is coupled with a theatre and performing arts centre, **displaying the industrial processes to the public.**”

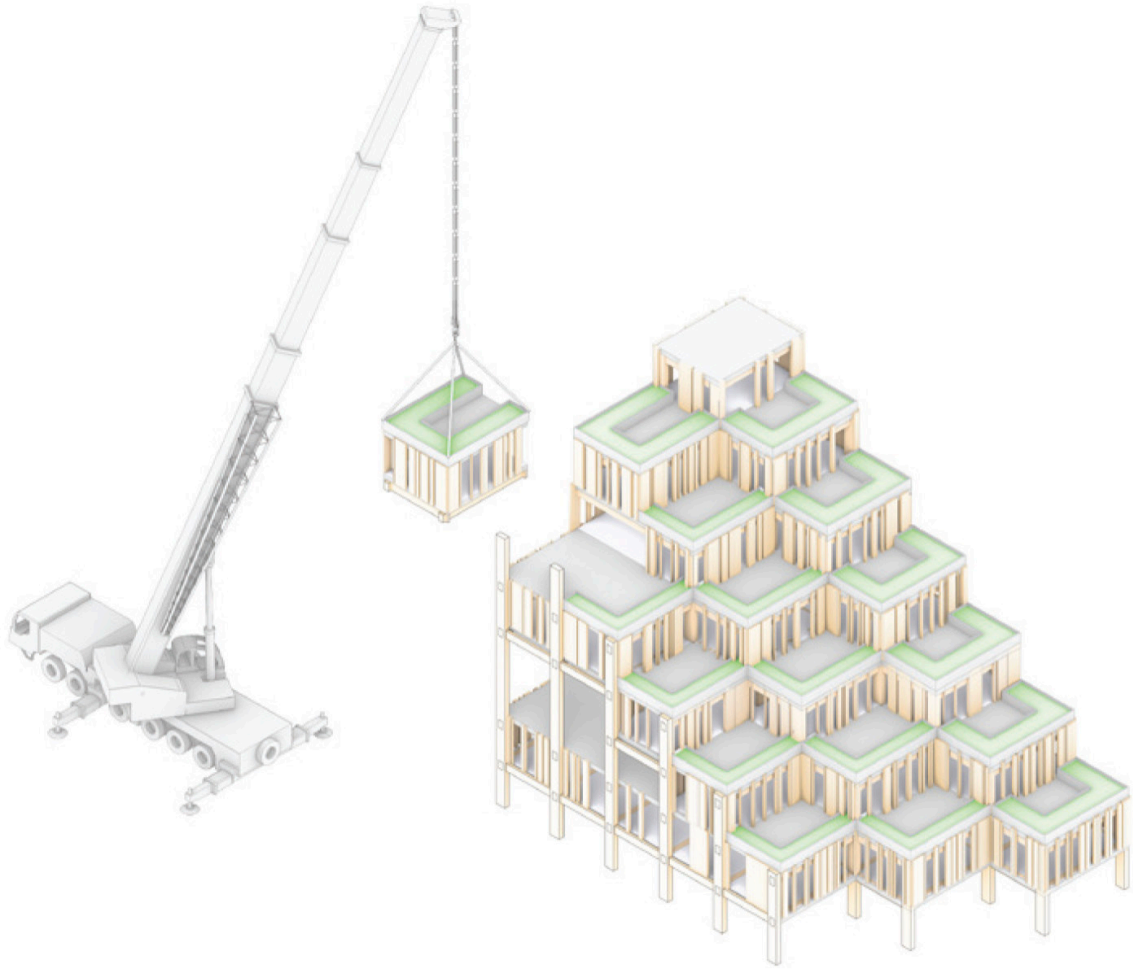


3802 NORTHERN TRACTION

Zain Karsan / Nathalie Bellefleur

OPEN CATEGORY - HONOURABLE MENTION

“Sudbury goes Modular, Prefab and sustainable with CLT construction of new residential construction. **Efficient and sustainable, Sudbury becomes a leader in CLT with intensive research in CLT at Laurentian’s McEwen School of Architecture and regular collaboration with a new CLT manufacturing facility, northern Ontario’s first.**”



3.3 DEVELOP INTERDISCIPLINARY RELATIONS

- Establish relations between mutually-benefiting disciplines;
- Identify synergies between professions, industries, and resources that can be capitalized on to maximize efficiencies where possible;

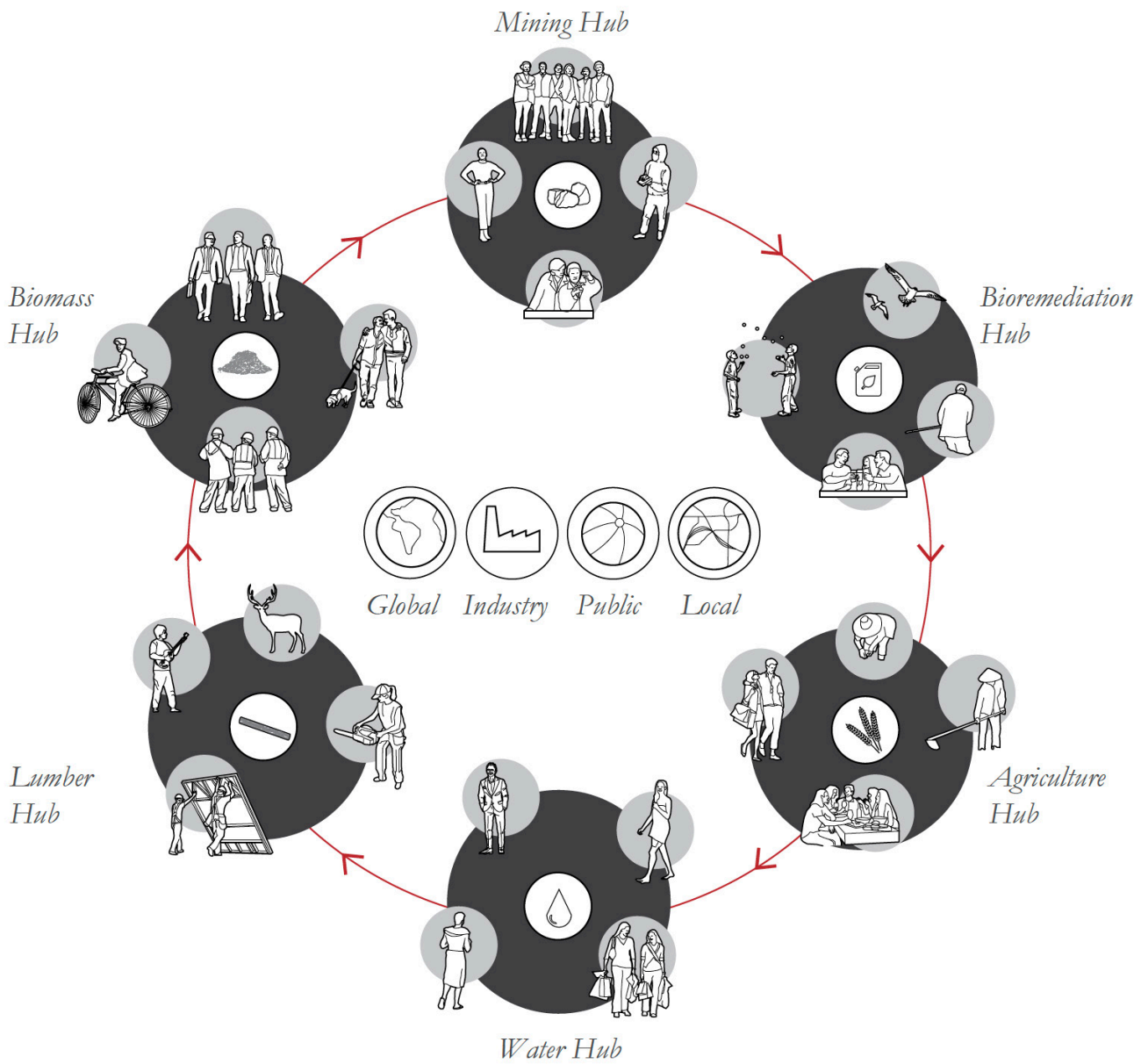
0351

A COLLECTIVE CITY

Jesse Martyn

STUDENT CATEGORY - HONOURABLE MENTION

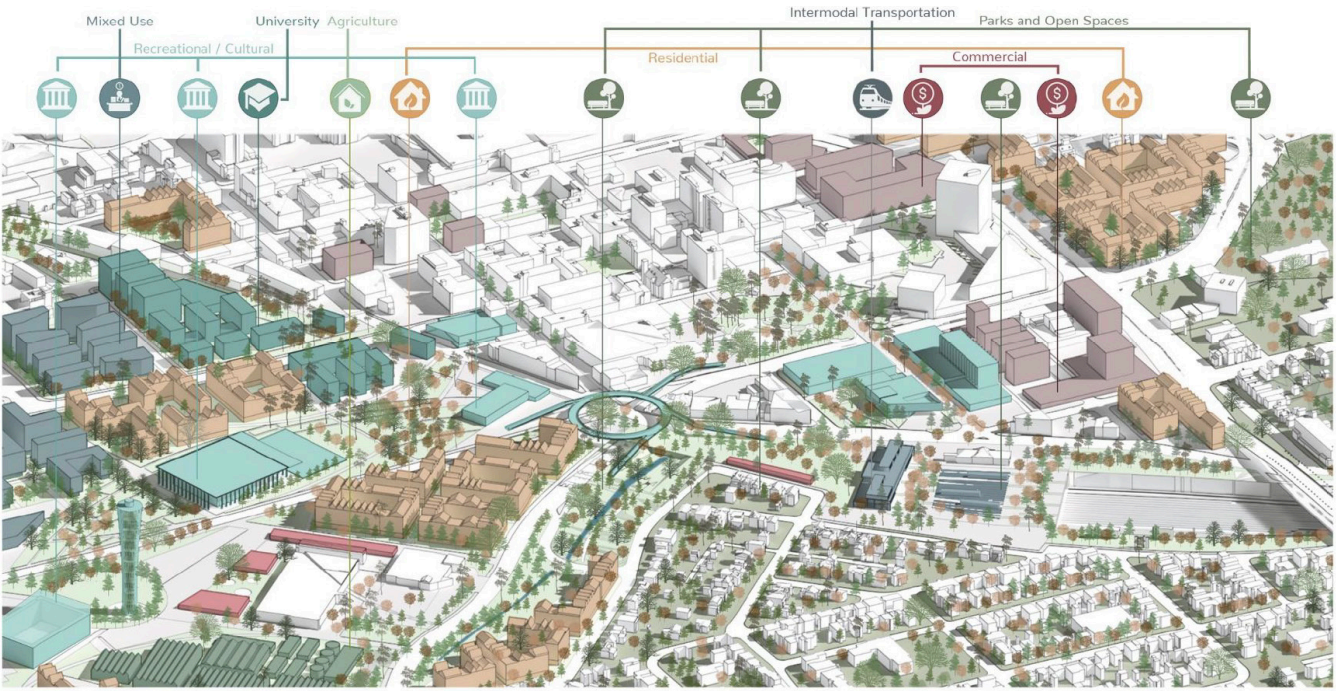
“The city can be treated as an organic system characterized by networks that connect interrelated magnets. **Magnets can be defined as resource community hubs that fuse together local industry, global innovation, and public interaction.** They are spaces defined by industry and community, synthesizing various architectural typologies as hybrids rather than segregating them through strict zoning regulations.”



0946 DOWNTOWN-THE HUB

María Camila Leal Acevedo / Juan Pablo Benavides
Soto / Paula Andrea Cufiño Zamora / Sebastian
Gomez Munar

“A compact resilient city, with places for working, studying, entertainment and living, designed around the new core and bringing dynamics into the downtown. Designing new parks and promenades, related to the Memorial Park and the new squares, also associated with a sustainable lifestyle, which covers a food supply chain, mixed-use buildings, community and educational facilities, which will get involved with stakeholders and research centers, using innovative and sustainable processes supported by a local commercial market, and cultural facilities such as the Junction and Place des Arts, which will be associated with the new museums.”



5318 LE JARDIN DANS L'EXTRÊME

Egest Gjinali / Cécile Martin / Samuel Descôteaux
Fréchette

“Tel un jardin, le lexique présente un foisonnement d’activités potentielles pour le Sudbury du futur. **Il propose un processus permettant à la communauté d’imaginer, d’inventer et réinventer collectivement d’autres possibilités.** Pour ce faire, des activités passées ou existantes ont été repérées et mises sous la loupe. Le lexique rend visible des actions qui ont en elles le potentiel du futur.”



A. MOBILITÉ

- A1.1- Pietonisation du centre ville
- A2.1- Sentiers urbains et sauvages : ski de fond, raquette, vélo, patins
- A3.1- Réseau de transport intermodal électrique - énergie renouvelable: Skidoo, Voiture, Tramway, Bus, Traversier
- A4.1- Transport libre-service en partage : auto, vélo, canoë
- A5.1- Train local interregional (grande vitesse)
- A6.1- Transport intermodal pour industrie légère

B. ÉCONOMIE

- B1- BOIS
- B1.1 Forêt régénérative
- B1.2 Construction bois
- B2- MINES
- B2.1 Centre d'innovation minier et des dérivés
- B2.2 Industries de transformation des produits de la mine
- B2.3 Industrie minière verte
- B3- CINÉMA
- B3.1 Plateaux de tournage cinéma et industries connexes
- B3.2 Production de décors
- B4- ALIMENTATION
- B4.1 Réseau de production annuelle
- B4.2 Distribution alimentaire «de la ferme à la table»
- B4.3 Industrie de la transformation alimentaire
- B4.4 Entreposage (greniers, silos)
- B4.5 Marchés
- B4.6 Fumoir communautaire
- B5- FINANCEMENT
- B5.1 Banque alternative
- B5.2 Institutions de cryptomonnaies
- B5.3 Institutions de socio - financement
- B6- INITIATIVES INDIVIDUELLES / ACCOMPAGNEMENT COLLECTIF
- B6.1 Incubateur à projets open source
- B6.2 Maker Labs
- B6.3 Repair café
- B6.4 Institutions d'économie circulaire
- B6.5 Production d'énergie renouvelable gérée par la communauté
- B6.6 Industries de city Makers
- B6.7 Centre de production des énergies du futur

C. ÉDUCATION

- C1- COMMUNAUTÉ
- C1.1 Fablabs
- C1.2 Ecole ouverte, centre d'apprentissage 24/24
- C1.3 Open source design platform
- C1.4 Connecteurs et facilitateurs de la ville participative
- C1.5 Cuisine communautaire - batch cooking
- C1.6 Application d'urbanisme et design tactique
- C1.7 Crèche alternative
- C2- RECHERCHE
- C2.1 Centre de recherche sur les énergies renouvelables
- C2.2 Bibliothèque de plantes
- C3- RENCONTRE DE CULTURES (AUTOCHTONES ET ALLOCHTONES)
- C3.1 Enseignements traditionnels Anishinaabek
- C3.2 Centre d'étude des savoirs autochtones
- C3.3 Banque de semences autochtones

D. AgriCULTURES

- D1- CULTIVER L'HUMAIN, CULTIVER LES COMMUNAUTÉS
- D1.1 Festivals et foires communautaires
- D1.2 Pow Wow
- D1.3 Tourisme culinaire
- D2- CULTIVER LA TERRE
- D2.1 Forêt comestibles
- D2.2 Fermes communautaires
- D2.3 Fermes urbaines intégrées aux bâtiments
- D2.4 Jardins individuels en kit
- D2.5 Aquaculture pour traitement des eaux, et la production de nourriture
- D2.6 Centres de cueillette
- D2.7 Élevage spontané (poules, abeilles, etc)
- D3- CULTIVER LA VILLE
- D3.1 Retour de la forêt à l'état naturel au centre de la ville (Memorial Park)
- D3.2 Retour des ruisseaux au centre de la ville (Junction Creek)
- D3.3 Mixité des usages : bâtiments en partage (stationnement / jardin comestible)

E. HABITER

- E1- SERVICES DE SANTÉ INDIVIDUELLE - COLLECTIVE
- E1.1 Hôpital de médecine holistique
- E1.2 Loges de guérison autochtone
- E1.3 Saunas et bains publics
- E2- MIXITÉ DES MODES DE LOGEMENT
- E2.1 Habitations en cooperative
- E2.2 Maisons de transition (réinsertion)
- E2.3 Habitations privées (condos) net zero
- E2.4 Logement social diversifié
- E2.5 Organisme foncier solidaire
- E2.6 Microliving, coliving and co-housing
- E2.7 Résidences de vie et travail (résidences d'artistes et de makers)
- E2.8 Wiigwaam-gamik [toit en dôme]
- E2.9 Nasawa'ogaan [toit pointu - portable]
- E3- MIXITÉ DES MODES D'HABITAT (RAPPORT À L'ENVIRONNEMENT)
- E3.1 Architecture open source et wikihouses en auto-construction
- E3.2 Principes de la ville résiliente
- E3.3 Dagwaagin [l'automne-cueillette de riz sauvage]
- E3.4 Biboon [l'hiver] - narration et communauté
- E3.5 Ziigwan [le printemps] - les sucres
- E3.6 Niibin [l'été] - la célébration
- E3.7 Mémorial des espèces étiennes
- E3.8 Jardin funéraire
- E3.9 Espace sacré pour une nouvelle mythologie

3.4 SUPPORT KNOWLEDGE SHARING

- Promote continuing education and provide new opportunities to learn;
- Support study in tandem with research, as well as alternative pedagogies;

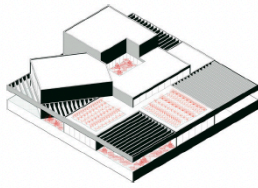
4665 THE WOODS FELLOWSHIP

Alexander Cassini / Daniela Leon / Christopher Alton

“The program will provide resources for practitioners, artists, academics, and activists, to lead courses mixing theory and practice. Each year, fellows research and teach in a studio environment that learns from wood(s). Courses are based at test sites with different themes which redress extractive planning’s legacies: Civics, Craft, Nature, Home, Technology, and Time. **The program mandate is to build an accountable form of urban co-production, and priority is given to members from communities marginalized from the formal planning process.** This open-ended process ensures a unique form of engagement: Research from each course is published as the S.C.C and each fifth year the cycle ends with critical recommendations and comments specific to the Official Plan Review Process.”

Course 1 Civics

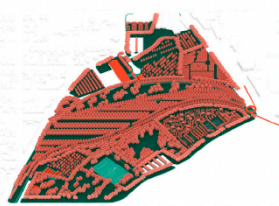
Architectural Press Publishing House
 Location: 190 Brady Street
 Current Program: Greater Sudbury Police Department
 Zones: C6: Downtown Commercial (no change)



The Sudbury Police building provides no cultural or commercial activity, and limits the ability for Sudbury's downtown to flourish. With immediate connection to the City's administrative offices, the new Architectural Press building will directly inform Sudbury's planning process through its activities and advocacy.

Course 3 Nature

Central Demonstration Forest
 Location: Downtown Rail Yards
 Current Program: Forest, Light industrial
 Zones: C: Office Commercial; M: Business Industrial; OSC: Open Space Conservation; C: Downtown Commercial (change required).

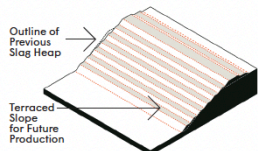


The rail lands and adjacent properties total 32 ha, almost equal to the central business district. A central forest will be an amenity while providing small scale silvicultural production, a living research laboratory, sports and recreation facilities, and substantial health benefits to residents.

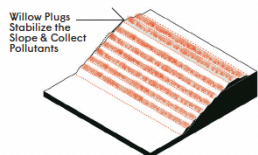
Course 5 Technology

Terraforming, Phytoremediation and Beyond
 Location:
 1) 85 Smelter Road
 2) Silver Lake Road
 3) Vale North Mine Site
 Current Program: Abandoned Copper Mine or Active Mining
 Zones: H21OSR(3): Open Space Recreation; M3: Heavy Industrial (change required)

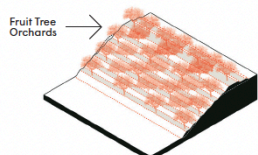
Though operations have been active here for over one hundred years, mining in the region is a relatively recent imposition. We cannot anticipate they will, or even can, remain in the same capacity for another hundred. We propose these remain "productive" areas long after the capital from mining has been exhausted, finding no reason that anyone should lose employment as part of a just green transition.



TERRAFORMING STAGE



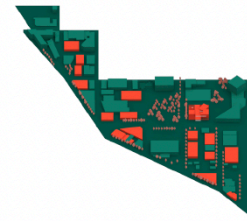
PHYTOREMEDIATION & STABILIZATION STAGE



PRODUCTIVE STAGE

Course 2 Crafts

Commercial and Artistic Seam
 Location: Elgin Street
 Current Program: Commercial strip, 2-3 Story High Brick Buildings
 Zones: C: Office Commercial (no change)

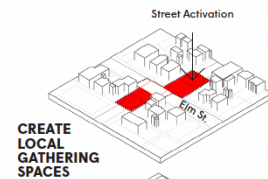


A hard edge, Elgin street provides poor connectivity between the rail yards and the downtown. As a uniting seam, Elgin will leverage artistic and cultural production already in existence as a chain of commercial craft sites, serving as a translation between the woods of the urban forest and wood itself as a primary building product.

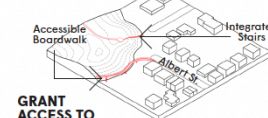
Course 4 Home

Housing and Access: Woods as Neighbour
 Location: Various
 Current Program: Residential, Gathering space, Recreational
 Zones: OSP: Open Space Private; R: residential, low and medium density; C: Commercial; P: Park (no change)

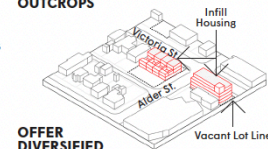
Reforested pockets have been left as rocky outcrops within residential districts. Community management has activated several of these sites while residential conditions create sometimes surprising adjacencies. Remnant spaces in close proximity are proposed to integrate housing densification while thinking of outcrops as a system of neighbourhood hubs.



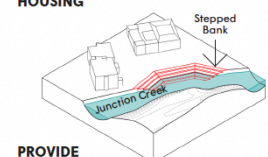
CREATE LOCAL GATHERING SPACES



GRANT ACCESS TO OUTCROPS



OFFER DIVERSIFIED HOUSING

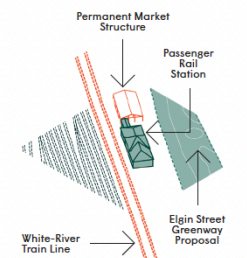


PROVIDE AMENITIES AND ECOLOGICAL SERVICES

Course 6 Time

Relearning Relations: Into the Woods
 Location: Downtown Sudbury Train Station
 Current Program: Regional rail; Temporary Market
 Zones: C6: Downtown Commercial; Zone M1(14) Mixed Light Industrial/Service Commercial (change possible)

As a proxy for holiday-making in this region, the Sudbury-White River train romanticizes wilderness when presented as an "adventure route" and allows for a frontier narrative to emerge from the landscape. By dwelling in the contradictions can new regional narratives be written: The curatorial fellow each year will engage with history as motivation. We propose no physical change to the site, but suggest ownership be granted to First Nation signatories of the Robinson Treaty.



5213 RE-STITCHED

Aidan Lucas / Maeve Macdonald

STUDENT CATEGORY - WINNING PROPOSAL

There are multiple learning facilities present in downtown Sudbury that are currently disconnected. The creation of the Learning District aims to connect these existing facilities, while introducing new programs and spaces. **This district will promote intergenerational and creative-industry exchange of knowledge.**

This district will also include a new student residence, that will provide housing for students studying in this learning patch.

The creative and collaborative work environments located in this patch will also be accessible to local highschool students, specifically the Sudbury Secondary School Art Program.



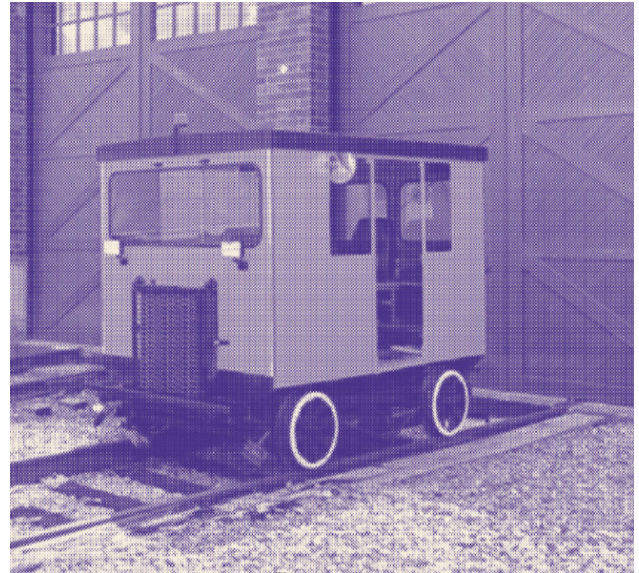
3.5 CELEBRATE TRADITION

- Celebrate the many cultures that populate the city's demographic and provide opportunities for congregation and expression;
- Identify and support the role of Indigenous knowledge in the creative process of redesigning a city;

1116 ALIMENTARY URBANISM

Jesse LeCavalier / Jake Rosenwald / Jennifer Chau
Tra / Michael Wideman / Connor Stevens / Siqi Wang

“[...] this project envisions a thriving Sudbury by transforming its sites of extractive mining operations into a suite of regenerative economic practices: food cultivation; energy production; reforestation and timber production; as well as new forms of education, healthcare, outreach, and recreation. **The Downtown Core becomes a new hub for these activities and a model for a regenerative economy.**”

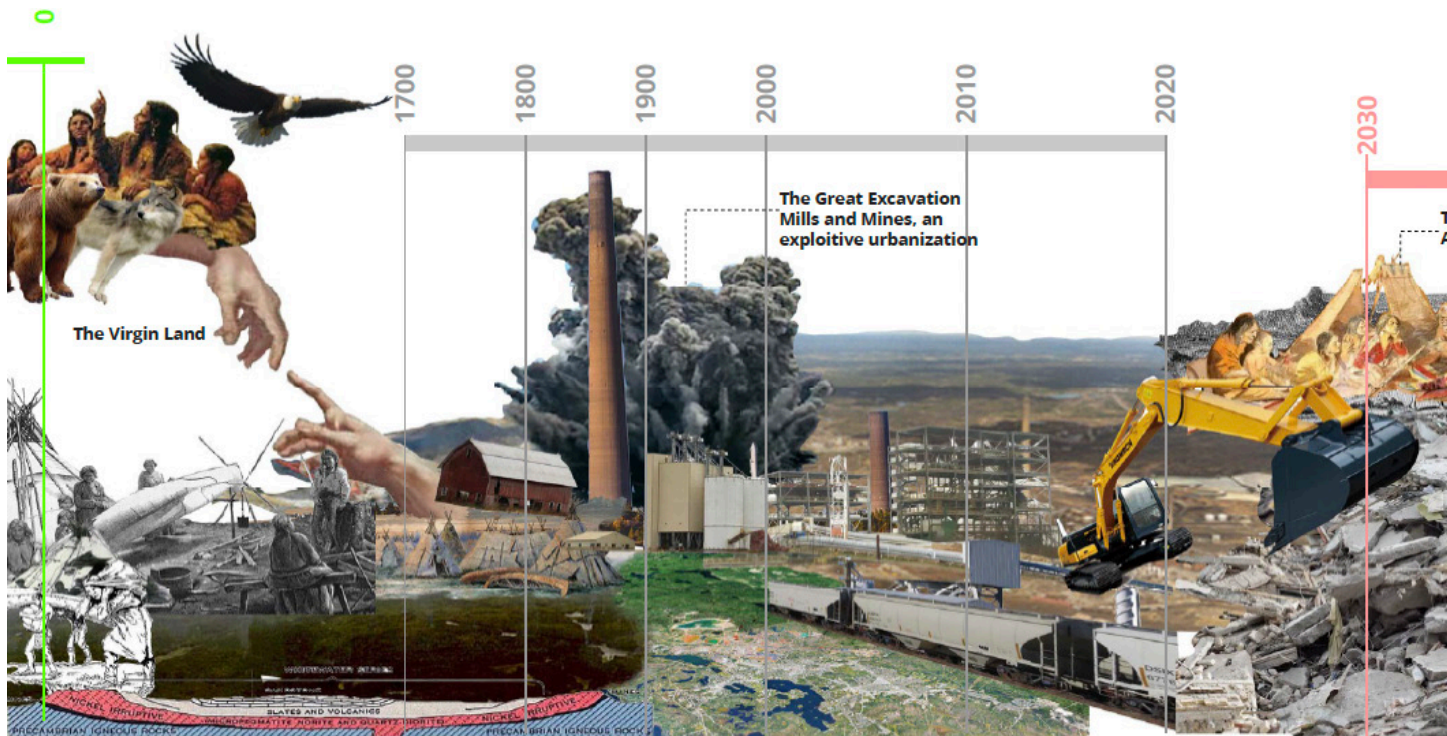


3478 POLLINATING SUDBURY

Donsei Kim / Tommy Yang

“Architects and designers often put forward master plans with concrete solutions for troubled cities. However, we argue that the critical reading of a place must precede any proposal. In addition to its current normative understanding, we believe a critical and novel way of reading Sudbury’s current condition is necessary to project its better future. **In this sense, we see critically mapping Sudbury and its people - their past, present, and future - at the core of this project.**”

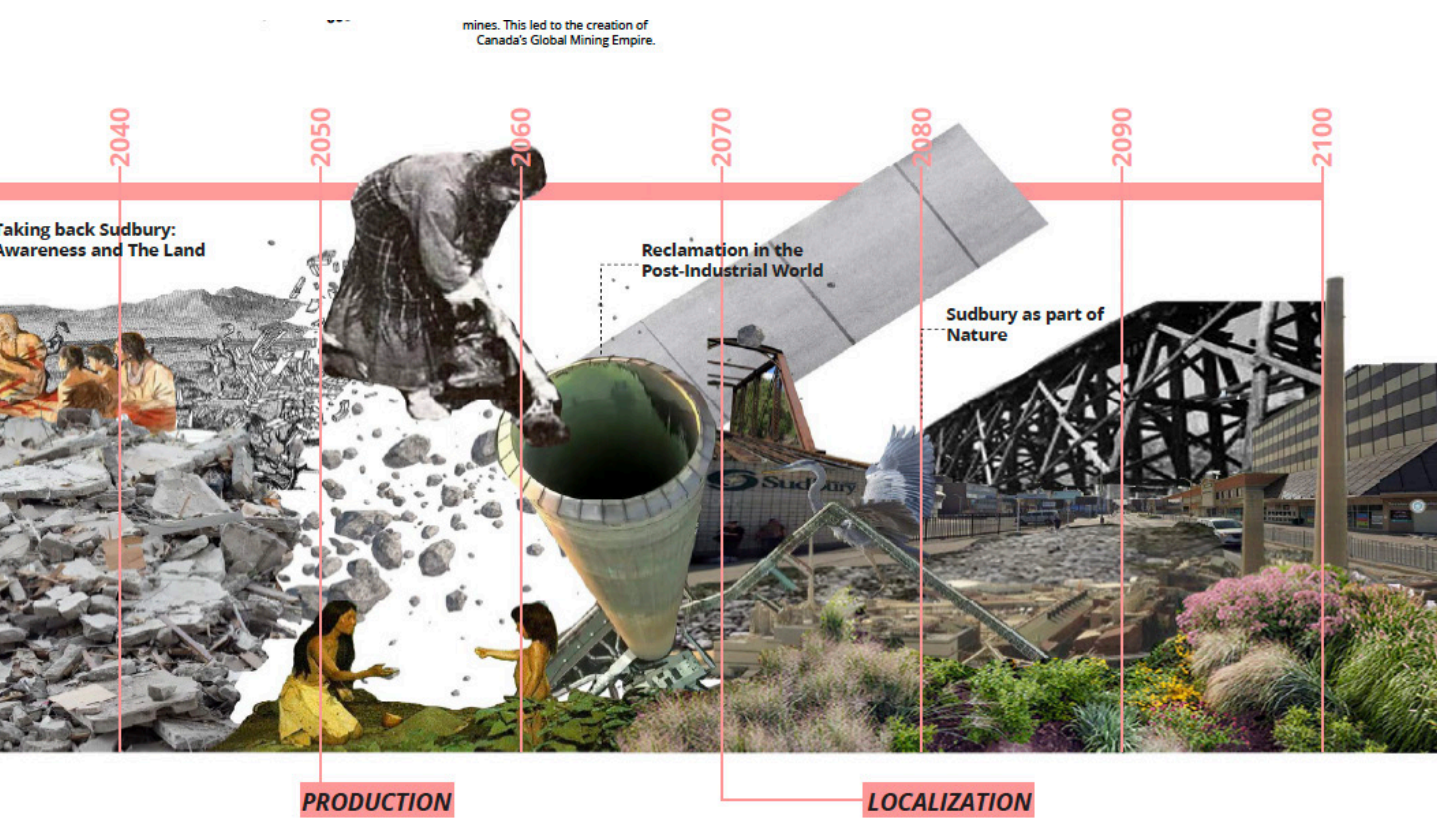
Our series of mappings that span across a range of physical scales (personal experience to regional scale) and timescales (24-hour cycle, to geological, longue durée) starts to reveal important ingredients of Sudbury. Rather than aiming to render a seamless space of consensus, our project aims to first reveal controversies, frictions, and antagonisms of the place.”



We begin our study by acknowledging the Robinson-Huron Treaty of 1850. We also recognize that the locations of the study includes

(personal experience to regional scale) and timescales (24-hour cycle, to geological, longue durée) starts to reveal important

RECLAMATION



4335 INNER SPRAWL

Nathaniel Proulx Joanisse

“We have been analysing, monitoring and carefully searching the past and the present to find potential alternatives for the future.

We have found some ideas and concepts. We prefer to call them strategies.

Those strategies are meant to be deployed at a territorial and urban scale. They involve the definition of new limits to redirect the energy into the urban cores, allowing new opportunities by consolidating people, resources and knowledge. This inner sprawl reconnects different urban areas in order to create cohesion and density. Thanks to a moratorium on the use of the land, the polycentric city will get back to its centers by reusing existing plots, voids, lands, buildings and infrastructures.”

Durham



1963



Today

[] Δ
FRAGMENT HOST



2050

! N *
CONNECT ANCHOR RECLAIM

Elm-Durham



1965



Today

! Δ
CONNECT HOST



2050

+ N *
INFRASTRUCTURES ANCHOR RECLAIM

Larch



1963



Today

+)(Δ
INFRASTRUCTURES BALANCE HOST



2050

! N *
CONNECT ANCHOR RECLAIM

CONCLUSION

DESIGN FOR THE FUTURE MID-SIZED CITY

CONCLUSION

Sudbury is at a point in its development when there is a unique confluence of opportunities and challenges. An unprecedented amount of development is being proposed both by the City and private developers. Of necessity, the City of Greater Sudbury will have to reaffirm its approach to future planning in order to appropriately reflect the ambitions of its constituents with regard to cultivating a healthy and desirable city, while also anticipating an evolving global context and its shifting values with regard to the environmental impacts of land use developments and infrastructural projects.

Sudbury is in the rare position to be able to initiate a second phase of its internationally recognized re-greening story. A story that not only continues to exemplify grassroots remediation efforts, but sustainable urban development as well. Particularly, it can show how the two can be synonymous. The city can become an incubator of design innovation and, given its mid-sized scale, a case study for similarly sized cities. In this way, the imminent development of Sudbury's urban core and outlying districts can become a catalyst for a broader urban renewal approach that is grounded in ecological ambitions.

The Sudbury 2050 Urban Design Ideas Competition is globally unique in that entrants have been offered the opportunity to propose their ideas for a complete urban core. The 99 proposals repeatedly identify synergies between art, architecture, urban design and a myriad of other complementary disciplines in order to design comprehensive approaches to the revitalization of an entire downtown. The competition framework has not only brought to life a host of proposals for existing development projects in the city, it has also given voice to multidisciplinary visionaries to imagine creative approaches and principles for the design of mid-sized cities at a larger scale. Perhaps the same values that will ideally govern the design of Sudbury's latest developments - a new events centre, a new library and art gallery, housing projects, the repurposing of the rail lands - could be adapted and applied to cities of a similar scale and context.

Across 99 proposals from local and global teams, there is a shared ambition to regenerate natural processes, to reimagine urban spaces, and reveal new opportunities for growth.

The consistency of vision, while proposing very creative programs and ways of visually representing design thinking remains the legacy of the competition. This treasure-trove of design innovation is a gift to the City of Greater Sudbury as it prepares to grapple with a post-Covid economy and a changed world in terms of how and where people now work and live. The final results of the competition raises the question: What type of hybrid solutions can be implemented for Sudbury's future to create a unique, affordable and liveable city, offering a lifestyle reconnected to nature? Such a precedent would then be applicable to numerous cities of similar scale, in a multitude of places promoting circular economies and repaired or regenerated ecologies.

The intent of *Regenerate, Reimagine, Reveal: A Synthesis of the Sudbury 2050 Urban Design Ideas Competition* has not been just to showcase solutions to the challenges faced by the city presently, but more critically to show the opportunities for what is to come. The document exhibits the passion that creative designers across a number of disciplines display in revitalizing their cities and in realizing their full potential through design. Beyond the individual value that each proposal's many ideas presents, the competition itself highlights the value in engaging a community with regard to understanding prevailing values, generating excitement and inspiration, and ultimately in establishing a framework for sustainable and innovative urban design.

APPENDIX

ADDITIONAL COMPETITION SUBMISSIONS

The Synthesis of the Sudbury 2050 Urban Design Ideas Competition has included excerpts from the submissions that best communicated the key themes; however, there were many other submissions that also provided innovative solutions and provocative images. Several of these images are invaluable to include in this document.

This appendix presents images from a number of these competition submissions, which reflect the recurring key themes presented throughout the document. Rather than presenting design strategies accompanied by text; however, these complementary images speak for themselves and depict additional varied aspirations proposed in the Sudbury 2050 Urban Design Ideas Competition. The intrinsic value of these visual images comes from their ability to generate conversation and excitement within the community.

*To see the entire collection of competition submissions, please visit the **Catalogue des Concours Canadiens** site: www.ccc.umontreal.ca*

To see individual competition submissions, please follow the embedded links in the team codes provided.

COMPETITION SUBMISSIONS - STUDENT CATEGORY

FINALISTS

- 5213 **Re-Stitched** *Aidan Lucas / Maeve Macdonald*
- 0351 **Collective City** *Jesse Martyn*
- 1478 **Urban Constellation** *Gaël Biache / Elise Dalmasso*
- 4245 **Bold & Beautiful** *Bryan Jian Hao Goh / Charmaine Chua Wei Ying / Chun Ho Christopher Wong / Nabhatsorn Na Thalang / Rachel Yi En Chiam / Tessa Hui Zhi Tan*
- 0452 **Green Railway** *Cristian Ovidiu Pavel*
-
- 0677 *Paul Arkilander / Ellen Molloy / Sally Nicholson / Julian Del Bel Belluz / Jack Lawson*
- 0975 *Yiyan Zhu / Xiaoyu He / Yanran Luo*
- 1296 *Liam Callahan*
- 1396 *Zheng Zhou*
- 1723 *Małgorzata Zielonka / Damian Kuna*
- 2781 *Danika Blais*
- 2751 *Ahaan Marwah*
- 3184 *Tatiana Estrina / Lena Ma*
- 4033 *Yasaman Sana / Sarah Elizabeth Chin / Muskan Goel / Emma Ricci Watkinson*
- 5025 *Martyna Wasiolek*
- 5200 *Nithin Cheluva Ranganath .M / Madhura Ramanathan / Mehta Radhika Nandkishore / Aishwarya Raj Sekhar*
- 5646 *Emilie Valiquette / Megan Asbil / April-Marie Machum / Kaleigh MacLeod*
- 6310 *Qiuyi Bian / Zixuan Luo / Yue Pan*
- 7492 *Claudio Araya / Arda Ertan Yildiz / Dominika Weronika Bugajska*
- 7546 *Gabrielle Loignon-Lapointe*
- 7767 *Christopher Johnson*
- 7871 *Dolapo Beckley / Allen Ly*
- 8100 *Sydney Sheppard / Aaron McRoberts*
- 8238 *Josiane Roy*
- 8348 *Jonathan Monfries / David Woodruff*
- 8408 *Mahesh Dhanasekaran*
- 8741 *Reese Babcock / Liam Burse / Jonathan Kabumbe / Catherine Daigle*
- 3069 *Zhemín Ren / Yuru Chen*
- 8983 *Rachel Barber*
- 9025 *Alex Polito / Patricia Poiana*
- 9702 *Bryant Serre / Wyatt Weatherson / Bayley Jung*

COMPETITION SUBMISSIONS - OPEN CATEGORY

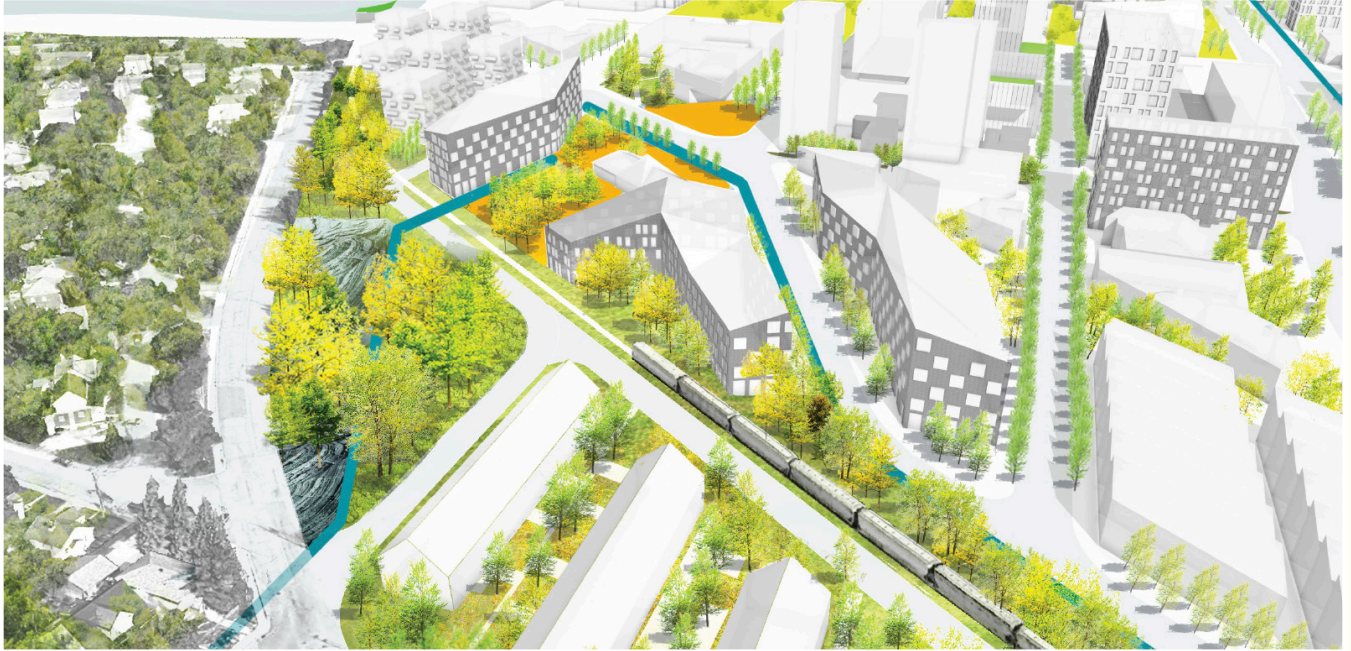
FINALISTS

- 0322 **Sève** *Karyna St-Pierre / Julie Parenteau / Émilie Labrousse / Pierre-Yves Diehl*
- 8341 **Mashkikike** *Emilio Portal / Matthew Hunter / Jayden Daoust / Elyse Portal / William Morin / Miranda Virtanen / Naomi Grant / Cora-Rae Silk / Camille Tremblay / Simon Blakeley / Rebecca Elphick / Megan Tran*
- 3802 **Northern Traction** *Zain Karsan / Nathalie Bellefleur*
- 0582 **Rewilding** *Sahana Dharmaraj / Jenna Lamb / Anastasia Renaud / Taylor Um / Kevan Cress / Shannon McMillan*
- 1116 **Alimentary Urbanism** *Jesse LeCavalier / Jake Rosenwald / Jennifer Chau Tra / Michael Wideman / Connor Stevens / Siqi Wang*
- 3478 **Pollinating Sudbury** *Donsei Kim / Tommy Yang*
- 4665 **The Woods Fellowship** *Alexander Cassini / Daniela Leon / Christopher Alton*
- 6943 **Growing the Forest City** *Eric Pearse*
-
- 0217 *Nicolas Nader Al Chamaa*
- 0320 *Francesco Martire / Nadia Cannataro / Pedram Karimi / Christopher Lam / Francesco Martire*
- 0403 *Madis Pihlak*
- 0906 *Ryan Roark*
- 0946 *María Camila Leal Acevedo / Juan Pablo Benavides Soto / Paula Andrea Cufiño Zamora / Sebastian Gomez Munar*
- 0956 *John Plumpton / Sara Jordao / Joseph McBurney / Krysten Nicoll / Anna Kosichenko*
- 1089 *Ali Fard / Chenjie Xiong / Tian Wang*
- 1139 *Shamim Sadat Hosseini / Soroush Rahman / Adel Saremi / Adib Mashhoon / Abdolhadi Daneshpour*
- 1625 *Francois Duchastel / Teemu Vuori*
- 1789 *Maryam Jafari / Seyed Abdolhadi Daneshpour / Arezu Khalili / Sahar Rezaei / Rezan Naghshbandi*
- 1805 *Max Venzel / Venzel Igor*
- 1938 *Daniel Daou / David Marsh / Kyle Andrews / Isabelle Jean Louis*
- 2046 *Ladan Mostafazadeh / Ladan Mostafazadeh / Mohadeseh Sadeghifefat / Faezeh Torabinezhad / Mahsa Amiri / Dr. Seyed Abdolhadi Daneshpour*
- 2508 *Juan Jacobo Molina Restrepo / Angelica Herrera / Juan Camilo Sanchez / Tomas Santacruz / Nicole Sperling / Catalina Vasquez*
- 2594 *Jeff W.N. Leung*
- 2596 *Justin Hollander / Ann Sussman / Don Ruggles / Heidi Pribell / A. Vernon Woodworth III / Kiernan Gordon*
- 2861 *Sarah Ives / Don Toromanoff / Ailsa Craigen / Kristen Sarmiento / Madina Koshanova / Rita Wang / Azad Chichmanian / Lilia Koleva*
- 2907 *Tyler Rozicki / Richard de la Riva / Gavin Affleck / Lucas Affleck-Cormier*
- 3120 *Jie Liu / Kai Tian / Ran Li*
- 3153 *Eva-Lucia Davila / Audrey Bayle / Charles Lopez*
- 3419 *Raúl Arteca / Alejandro Fernández Lecce*

- 3684 *Tawab Hlimi*
- 3970 *Jean-Sylvain Brochu / Geneviève Ménard*
- 4052 *Purvangi Patel / Naaz Mubarak / Saqib Mansoor / Stacy Florendo*
- 4335 *Nathaniel Proulx Joannis*
- 4343 *Cheng Peng / LIU Tianzhu / RUAN Yijia*
- 4476 *Varun Chopra*
- 4499 *Han Liu / Laura Xi Huang*
- 4575 *Teresa Arana Aristi / Dominika Misterka / Emeline Lex / Fernando Gonzalez-Camino / Marcin Zebrowski*
- 4816 *Beatriz Orozco / Mi Khi Ri*
- 4880 *Kate Bowman / Tracy Tse / Tess Hoover / Amanda Fics / Morgan Fics / Brett Walter / Dan Guillemette*
- 4972 *Christopher Knight*
- 5128 *Kazi Fida Islam / Md Abdul Awyal / SM Sazzad Lishan / Adnan Tanveer / Sumaiya Shameem / Asif Al Aziz / Abid Khan / Ashiq Abir*
- 5318 *Egest Gjinali / Cécile Martin / Samuel Descôteaux Fréchette*
- 5397 *Marcus Parviainen*
- 5468 *Juan José Vargas Castillo / TAP Arquitectura - AL2 Arquitectos*
- 5824 *Michael Putman / Sara L'Esperance / Ali-Cassandra Leiva*
- 5853 *Scott Getz*
- 6038 *Max Venzel / Igor Venzel*
- 6225 *Alexis Alarcón*
- 6261 *Sergio Alejandro Ramírez Hernández*
- 6480 *Sara Arab Oveissi*
- 6640 *Stephen Luoni*
- 6650 *Theodore Bazil*
- 6752 *Michelle Blom / Ranee Leung / Preetika Balasubramanian / Michael Szilagyi / Paul Hicks*
- 7051 *Priyanka Veera Uma Maheswari Jayabal*
- 7492 *Claudio Araya / Arda Ertan Yildiz / Dominika Weronika Bugajska*
- 7536 *Daniel Daou / Abraham Zarazua / Priscila López / Alejandra Ramos / Jaime Palacios / Víctor Pineda*
- 7738 *Arash Mesbah / Sam Tehranchi / Nasim Adab / Siavash Safari*
- 7763 *Sara Mohsennezhad / Sadaf Poorhojati / Shima Ahmadi Koolaei / Seyed Abdolhadi Daneshpour / Amin Kadkhodae*
- 8147 *Ruwan Fernando / Martin Ziarmal*
- 8205 *Arthur Peach / Justin Sawchuk / Vicki Lynn Gilhula / Ivan Samoylenko*
- 8275 *Maria Belen Baratta / Elizabeth Ciechky*
- 8439 *Nathaniel Willing*
- 8669 *Simon Rocheleau*
- 8857 *Yi Yang / Yingzhe Wang / Shan Jiang / Jiahui Li / Xinyue Liang / Mengdie He*
- 8959 *Ravi Siddhartha / Neelima Siddhartha*
- 9162 *Nina Hitzler / Tony Li / Helena Grdadolnik*
- 9492 *Maryam Mahvash*
- 9897 *Erika Bullock / Peter Bullock*
- 9996 *Carlos Portillo / Wyatt Armstrong / Neil Yan*

1.1

REWILD BARREN LANDSCAPES



6943 GROWING THE FOREST CITY

Eric Pearce



8238 (RÉ)IMAGINER SUDBURY D'AUJOUR'HUI À DEMAIN

Eva-Lucia Davila / Audrey Bayle / Charles Lopez



6943 GROWING THE FOREST CITY

Eric Pearce



BEFORE



AFTER

9897 DURHAM STREET POCKET PARK

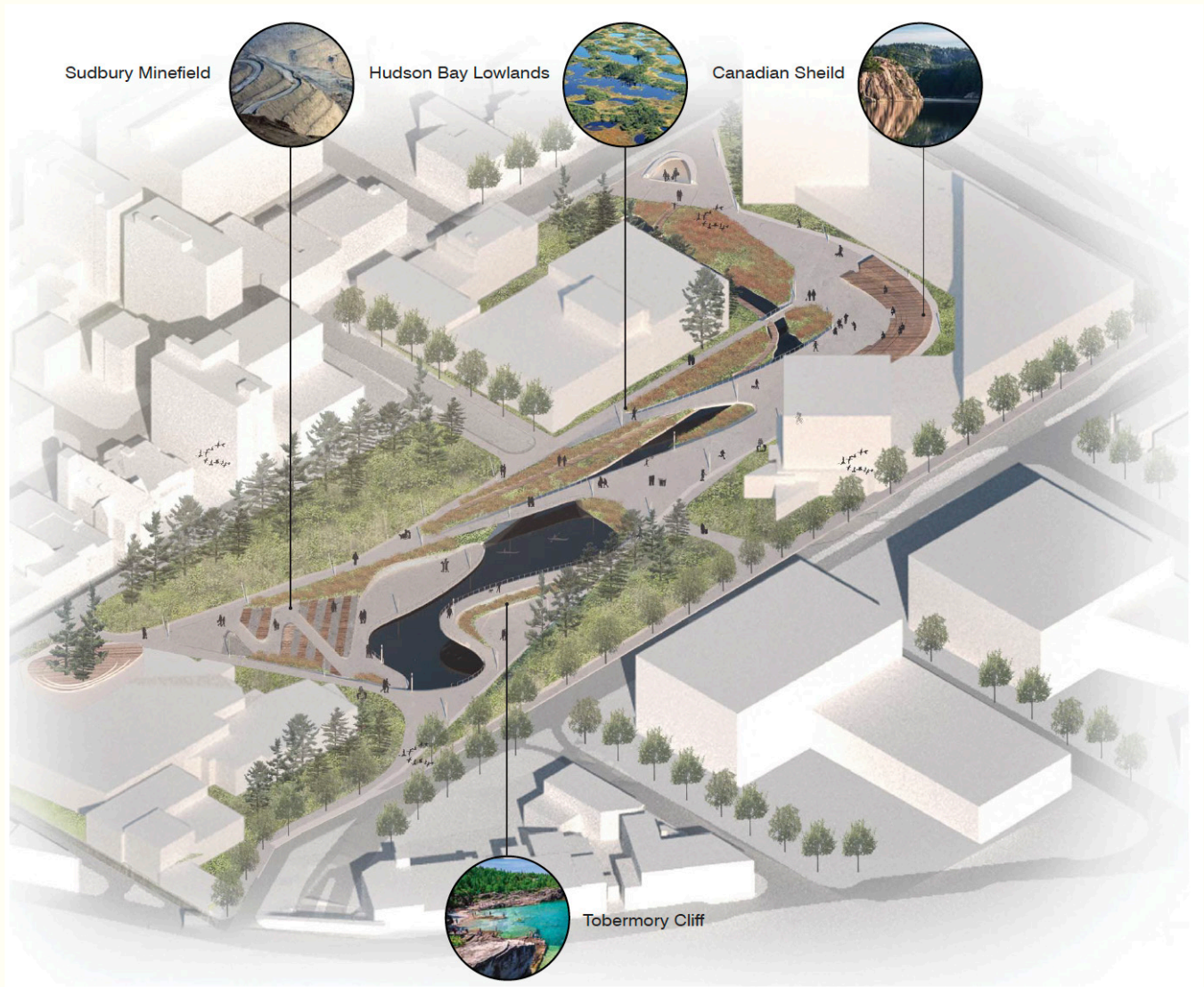
Erika Bullock / Peter Bullock



3153 LE NOUVEL ÉCOSYSTÈME URBAIN

Eva-Lucia Davila / Audrey Bayle / Charles Lopez

1.2 REMEDiate DAMAGED WATERWAYS





6943 CITY BONDS

Yasaman Sana / Sarah Elizabeth Chin / Muskan Goel / Emma Ricci Watkinson

1.3

FOSTER INTERSPECIES ASSEMBLAGES



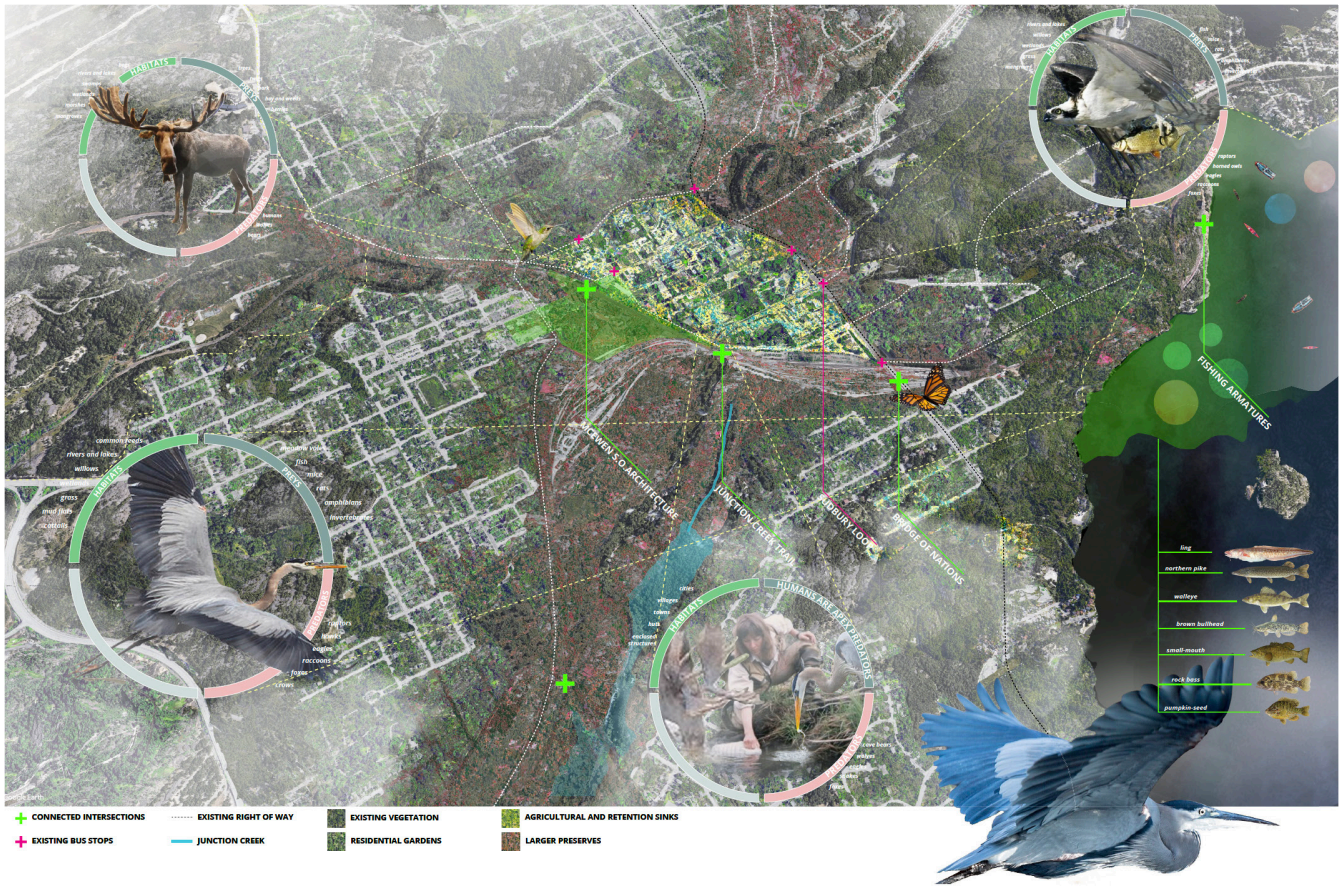
5468 URBAN MUSEUM

Juan José Vargas Castillo / TAP Arquitectura - AL2 Arquitectos



1478 URBAN CONSTELLATION

Gaël Biache / Elise Dalmaso



3478 POLLINATING SUBBURY

Donsei Kim / Tommy Yang



8341 MASHKIKIKE

Emilio Portal / Matthew Hunter / Jayden Daoust / Elyse Portal / William Morin / Miranda Virtanen / Naomi Grant / Cora-Rae Silk / Camille Tremblay / Simon Blakeley / Rebecca Elphick / Megan Tran

1.4

EMBRACE THE WINTER CITY



5468 URBAN MUSEUM

Juan José Vargas Castillo / TAP Arquitectura - AL2 Arquitectos



6650 SYNAPSE

Theodore Bazil



8408 THE CRATER

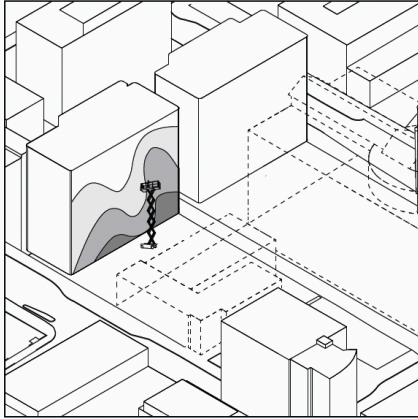
Mahesh Dhanasekaran



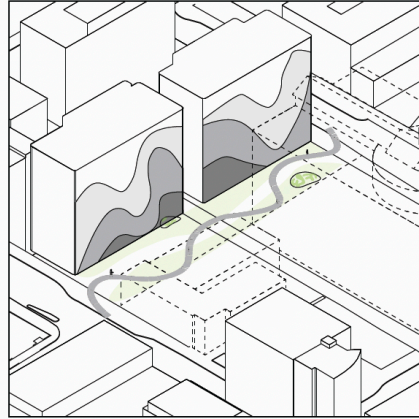
1.5

PHASE REVITALIZATION PROCESSES

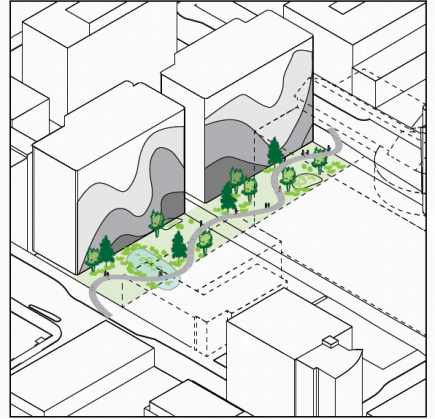
2030



2040



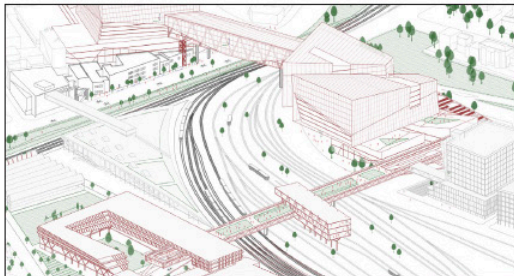
2050



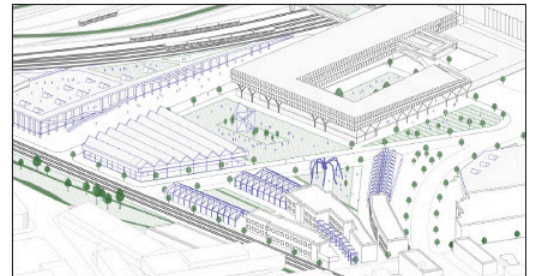
8100 GREY TO GREEN

Sydney Sheppard / Aaron McRoberts

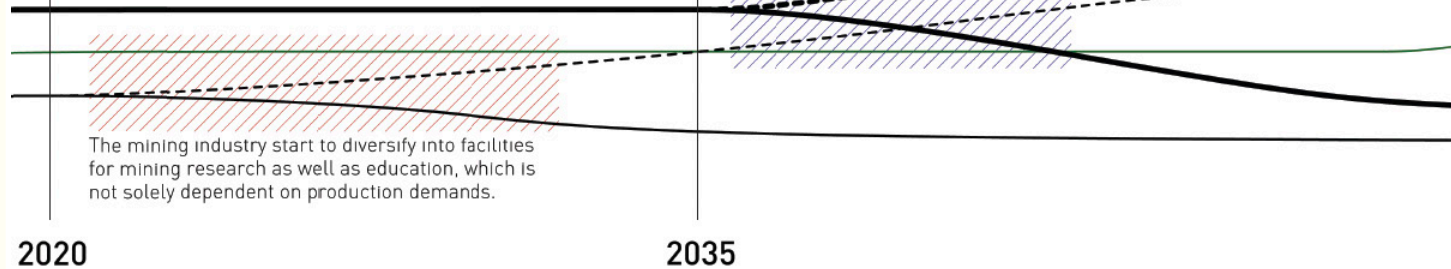
Stage 1 Bridge the Gap



Stage 2 Make It Home



Railway will transform from fast-speed train tracks to multi-used rails for local tram.



The mining industry start to diversify into facilities for mining research as well as education, which is not solely dependent on production demands.

2020

2035

6310 REIMAGINE RAILLANDS

Qiuyi Bian / Zixuan Luo / Yue Pan

2030



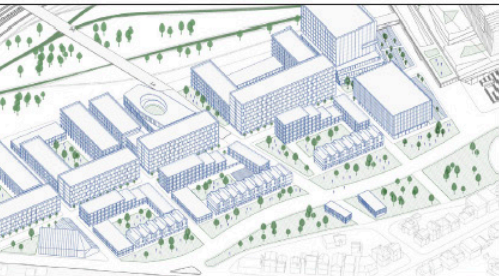
2040



2050



Stage 3 Regreen Railyards



Housing will be built on part of the abandoned rail yards, with large areas of greening embedded.

Most part of the railway will be abandoned and transformed into green lands and public spaces

Eventually, Sudbury after 2050 will proceed in a new development mode where mining and railway engage in a smart, innovative and transformative way.

2050

2.1 BEAUTIFY THE DOWNTOWN CORE



4499 UNDERBRIDGE PARK

Han Liu / Laura Xi Huang



4880 IN THE LOOOOP

Kate Bowman / Tracy Tse / Tess Hoover / Amanda Fics / Morgan Fics / Brett Walter / Dan Guillemette



4880 IN THE LOOOOP

Kate Bowman / Tracy Tse / Tess Hoover / Amanda Fics / Morgan Fics / Brett Walter / Dan Guillemette



8408 THE CRATER

Maresh Dhanasekaran

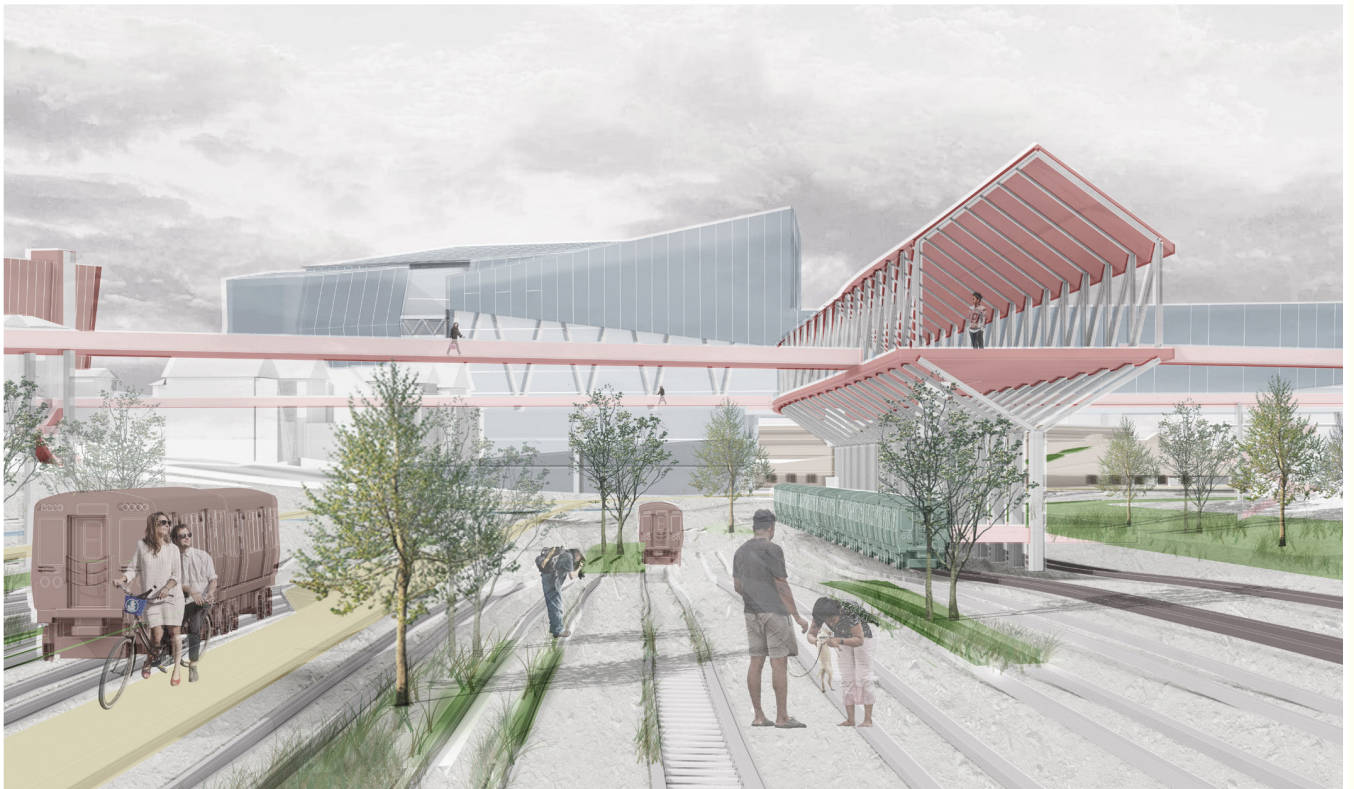
2.2

REPURPOSE DERELICT AREAS



4499 UNDERBRIDGE PARK

Han Liu / Laura Xi Huang



6310 REIMAGINE RAILLANDS

Qiuyi Bian / Zixuan Luo / Yue Pan



6752 RELOCAL

Michelle Blom / Rane Leung / Preetika Balasubramanian / Michael Szilagyi / Paul Hicks



2861 THE NEW NICKEL

Sarah Ives / Don Toromanoff / Ailsa Craigen / Kristen Sarmiento / Madina Koshanova / Rita Wang / Azad Chichmanian / Lilia Koleva

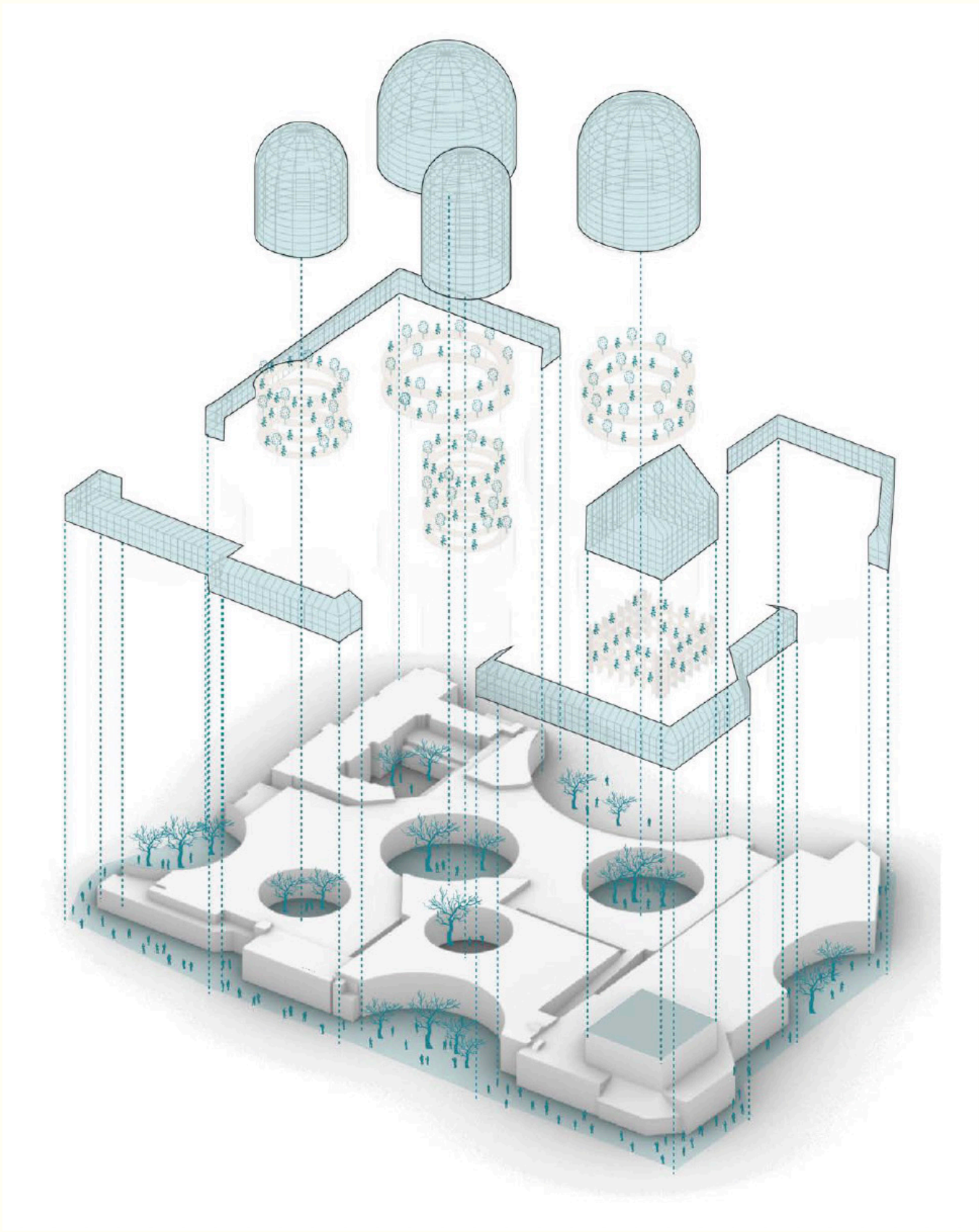
2.3

CONSIDER ADAPTIVE REUSE



6752 RELOCAL

Michelle Blom / Rane Leung / Preetika Balasubramanian / Michael Szilagyi / Paul Hicks

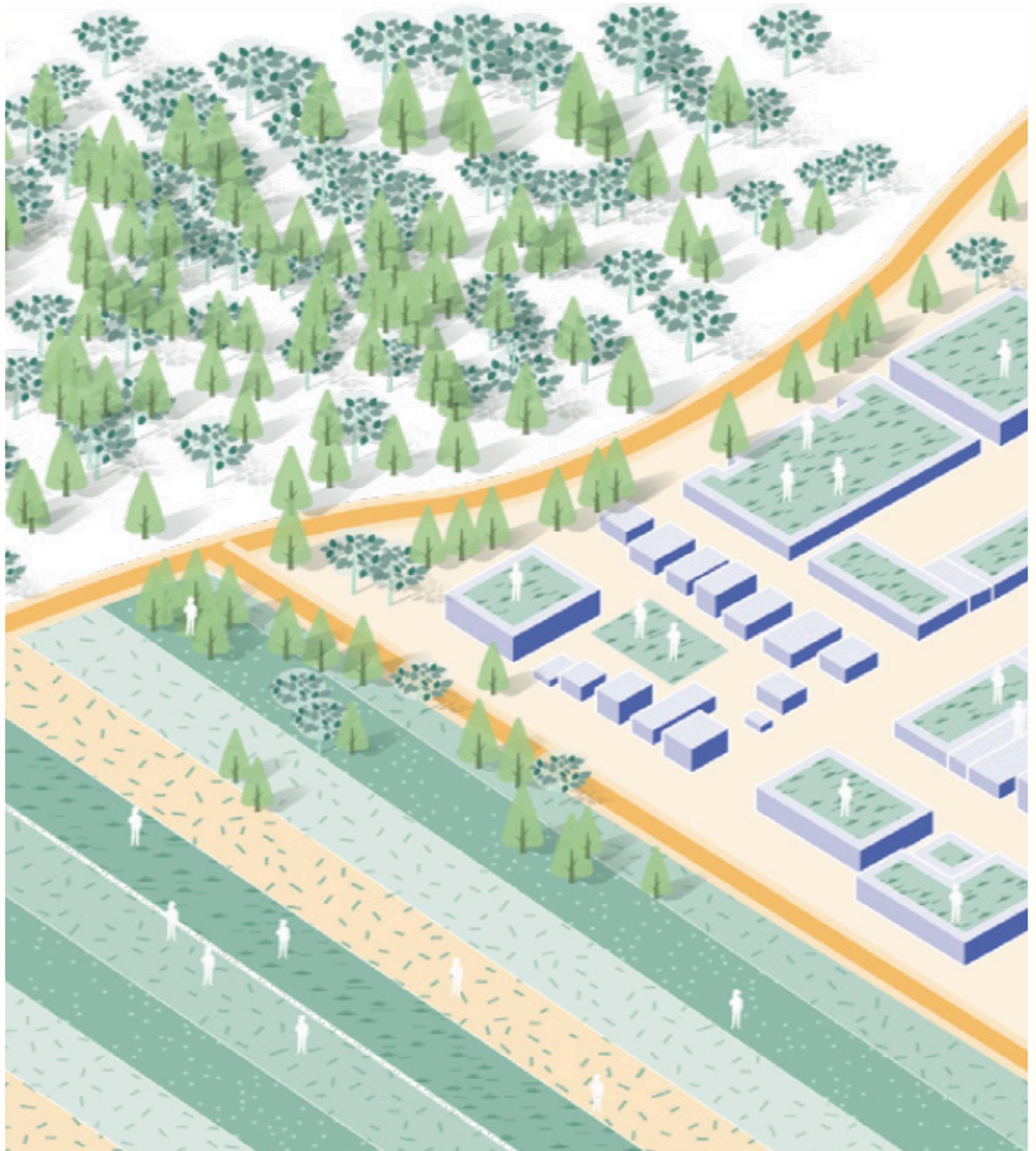


5318 LE JARDIN DANS L'EXTRÊME

Egest Gjinali / Cécile Martin / Samuel Descôteaux Fréchette

2.4

DESIGN REGENERATIVE BUILDINGS



6752 RELOCAL

Michelle Blom / Ranee Leung / Preetika Balasubramanian / Michael Szilagyi / Paul Hicks



8341 MA-SH-KI-KI-KE

Emilio Portal / Matthew Hunter / Jayden Daoust / Elyse Portal / William Morin / Miranda Virtanen / Naomi Grant / Cora-Rae Silk / Camille Tremblay / Simon Blakeley / Rebecca Elphick / Megan Tran



8408 URBAN.BAL

Mahesh Dhanasekaran

2.5

ENCOURAGE HOUSING DENSITY



2508 COMPA - CITY

Juan Jacobo Molina Restrepo / Angelica Herrera / Juan Camilo Sanchez / Tomas Santacruz / Nicole Sperling / Catalina Vasquez



5468 URBAN MUSEUM

Juan José Vargas Castillo / TAP Arquitectura - AL2 Arquitectos



8408 THE CRATER

Mahesh Dhanasekaran



1478 URBAN CONSTELLATION

Gaël Biache / Elise Dalmasso

2.6

OFFER ALTERNATIVE TRANSPORTATION



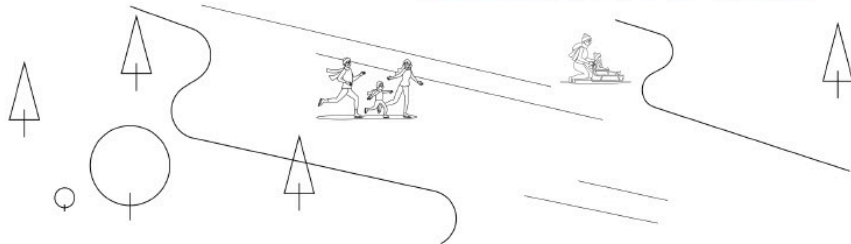
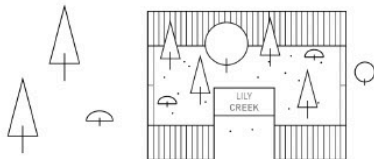
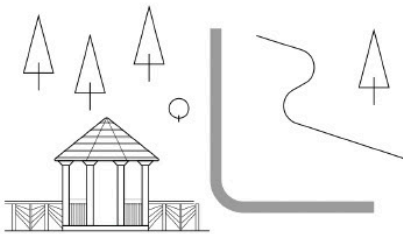
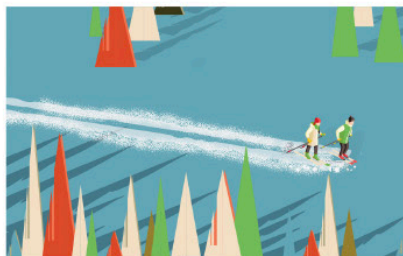
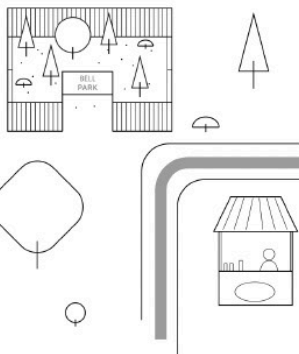
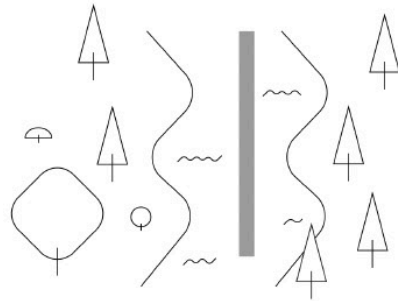
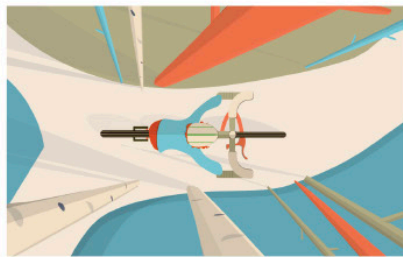
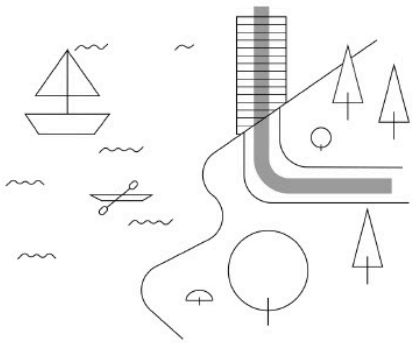
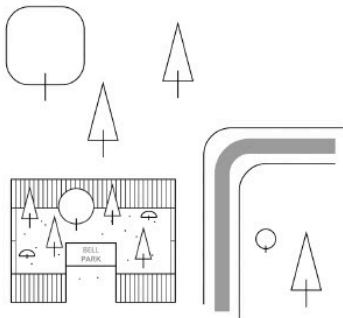
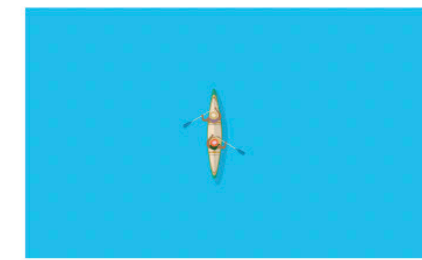
0946 DOWNTOWN THE HUB

María Camila Leal Acevedo / Juan Pablo Benavides Soto / Paula Andrea Cufiño Zamora / Sebastian Gomez Munar



3120 THE HYBRID CITY

Jie Liu / Kai Tian / Ran Li



8741 GOSUDBURY

Reese Babcock / Liam Burse / Jonathan Kabumbe / Catherine Daigle

3.1

CULTIVATE URBAN AGRICULTURE



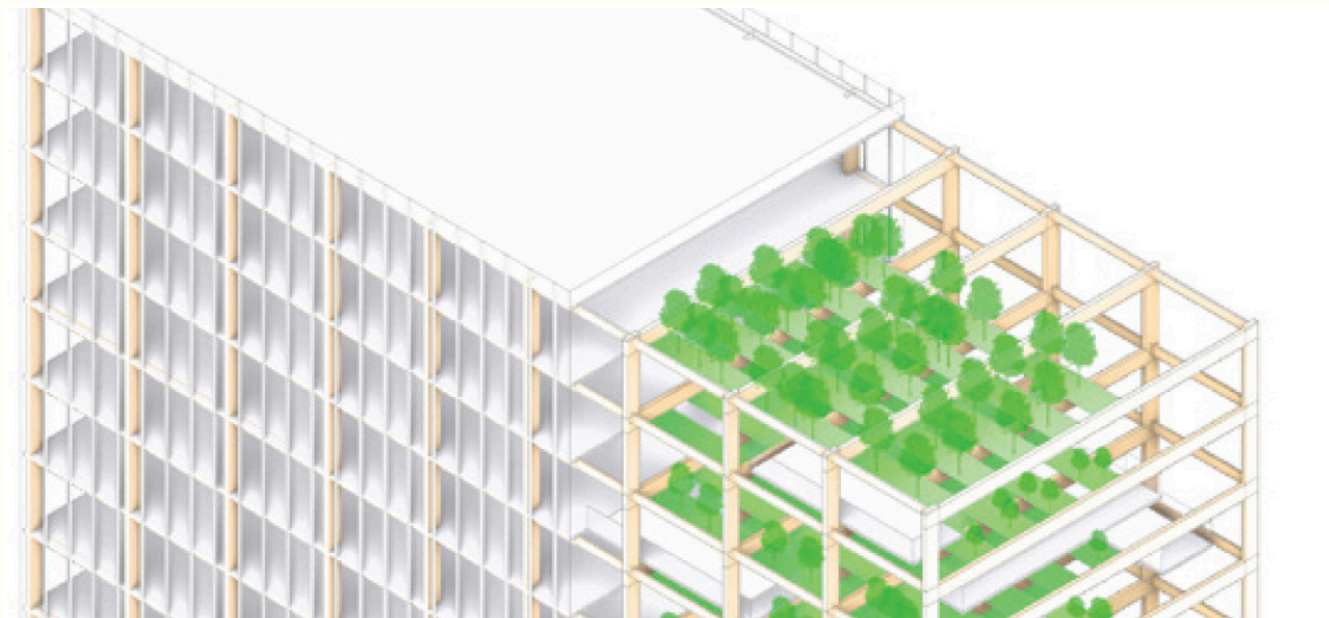
6640 THE GREEN RING

Stephen Luoni



0351 COLLECTIVE CITY

Jesse Martyn



3120 THE HYBRID CITY

Jie Liu / Kai Tian / Ran Li



6752 RELOCAL

Michelle Blom / Rane Leung / Preetika Balasubramanian / Michael Szilagy / Paul Hicks

3.2

INNOVATE MASS-TIMBER INDUSTRIES



0452 GREEN RAILWAY
Cristian Ovidiu Pavel



8341 MASHKIKIKE
Emilio Portal / Matthew Hunter / Jayden Daoust / Elyse Portal / William Morin / Miranda Virtanen / Naomi Grant / Cora-Rae Silk / Camille Tremblay / Simon Blakeley / Rebecca Elphick / Megan Tran



9996 TIMBER CITY

Carlos Portillo / Wyatt Armstrong / Neil Yan



4665 THE WOODS FELLOWSHIP

Alexander Cassini / Daniela Leon / Christopher Alton



6640 THE GREEN RING

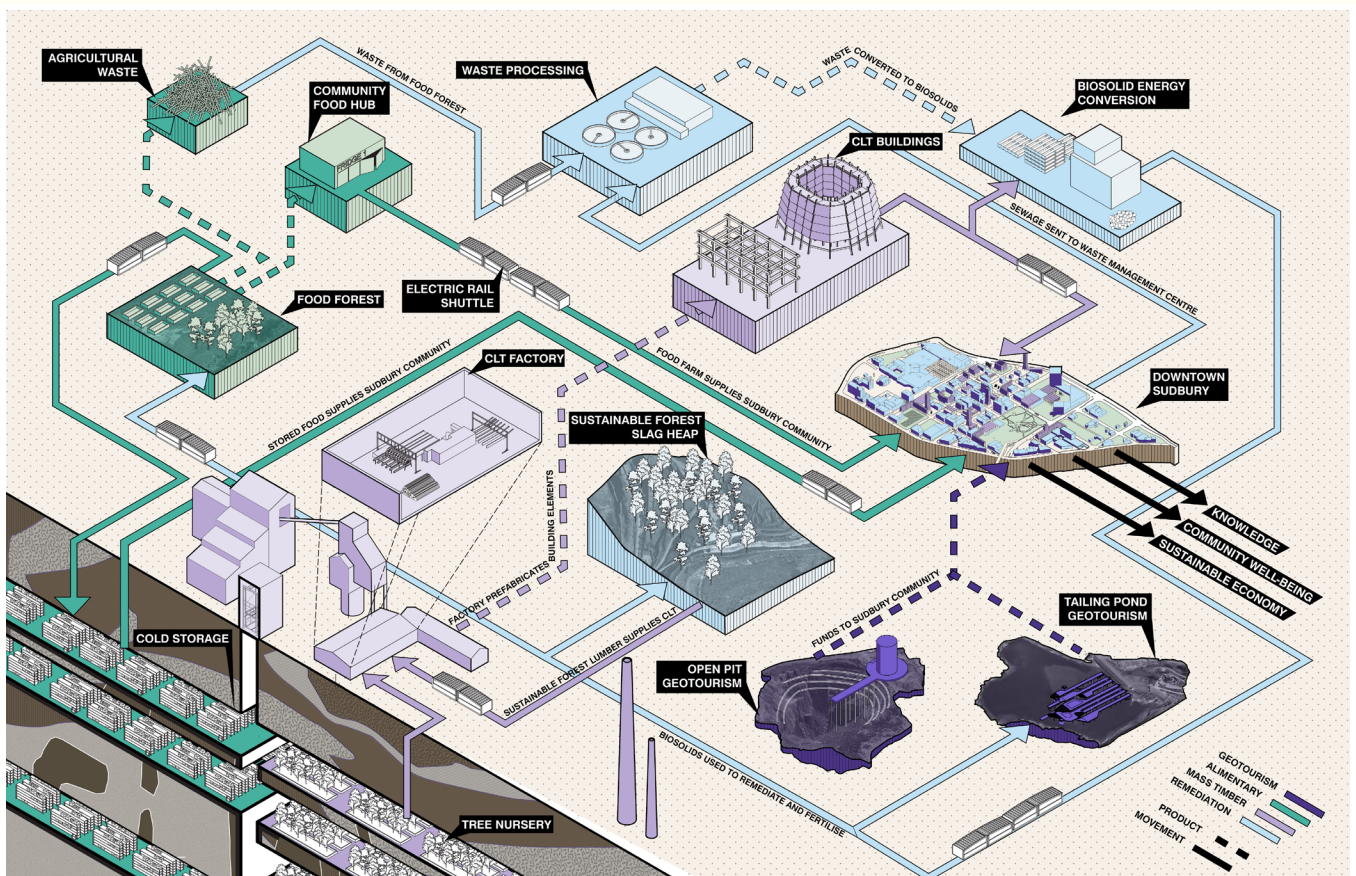
Stephen Luoni

3.3 FOSTER INTERDISCIPLINARY RELATIONS



6752 RELOCAL

Michelle Blom / Ranee Leung / Preetika Balasubramanian / Michael Szilagy / Paul Hicks



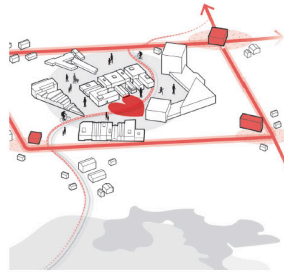
1116 ALIMENTARY URBANISM

Jesse LeCavalier / Jake Rosenwald / Jennifer Chau Tra / Michael Wideman / Connor Stevens / Siqi Wang



A. Creating green climate axes to reconnect Sudbury and the landscape

The climate axes will create recognisable green urban structures which lay the foundation for parks, climate adaptive infrastructure, recreational paths, and for urban development.



B. Redesigning the infrastructure network to boost Sudbury's mobility transition

The concept introduces smaller, human-scale streetscapes within shared streets, new local connections, and regional mobility corridors. The concept uses the large right-of-ways existing in the downtown to embrace the mobility transition.



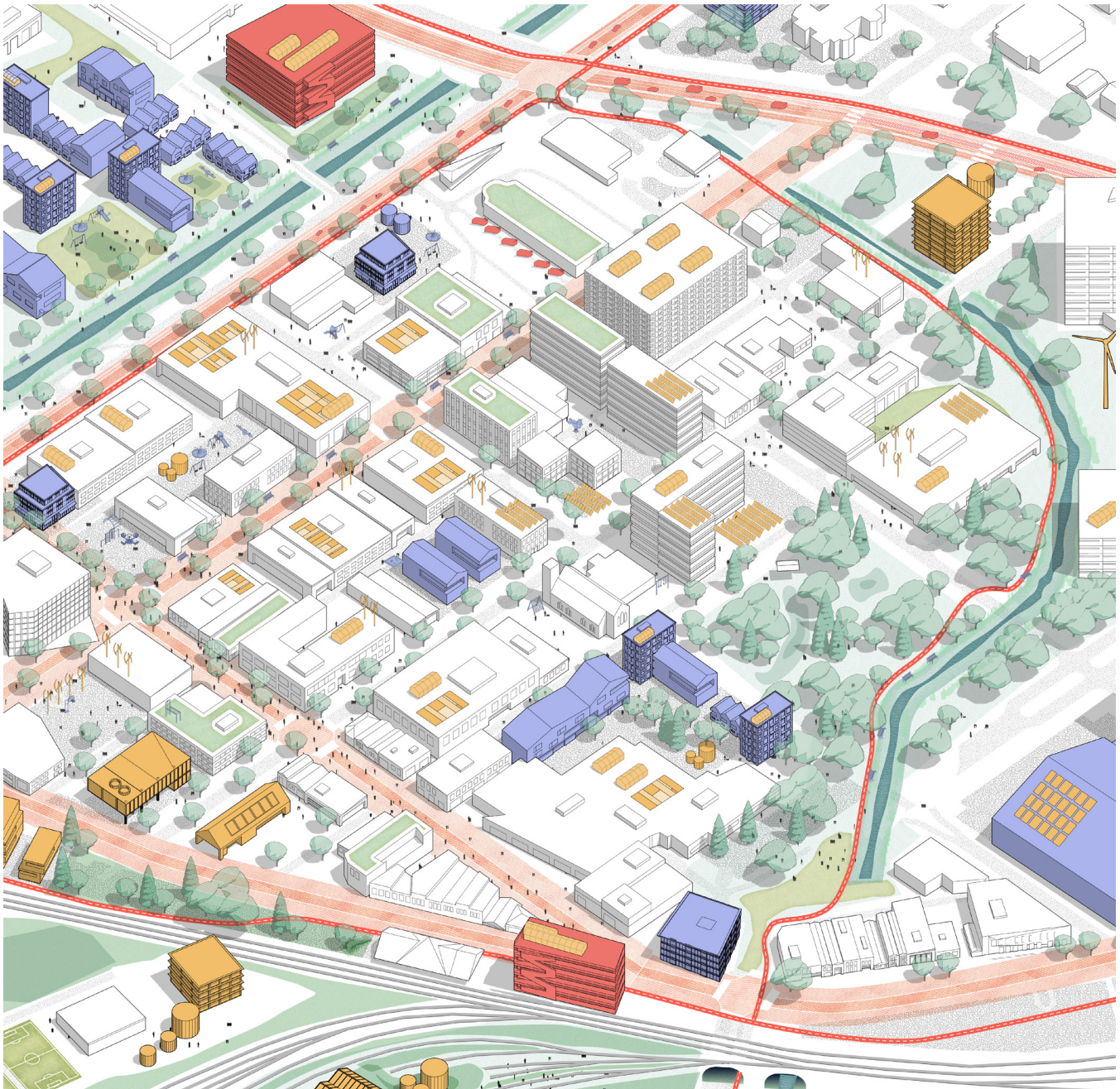
C. Diversifying the economy for a self-sufficient Sudbury

Centred around resource security, the plan proposes a diverse urban production landscape including local food programs, regional and community energy systems, and flexible live-work areas.



D. Building a livable, affordable and inclusive downtown Sudbury

By increasing livability in the core through green, transit, and economic transitions, the community is brought back to the city. Residential and mixed-use projects in high-quality areas create higher access to services for a diverse set of residents.

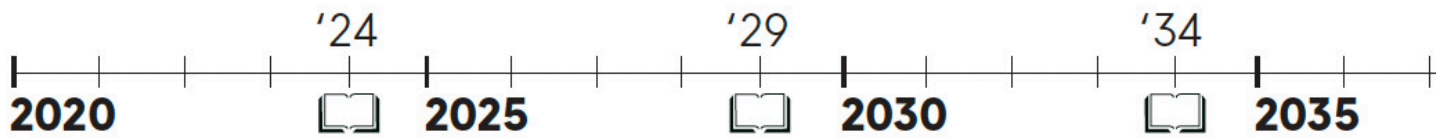
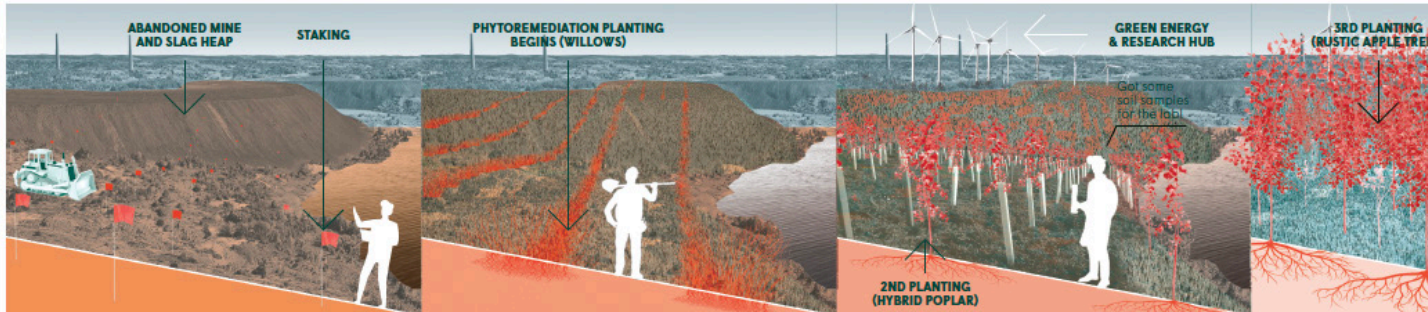
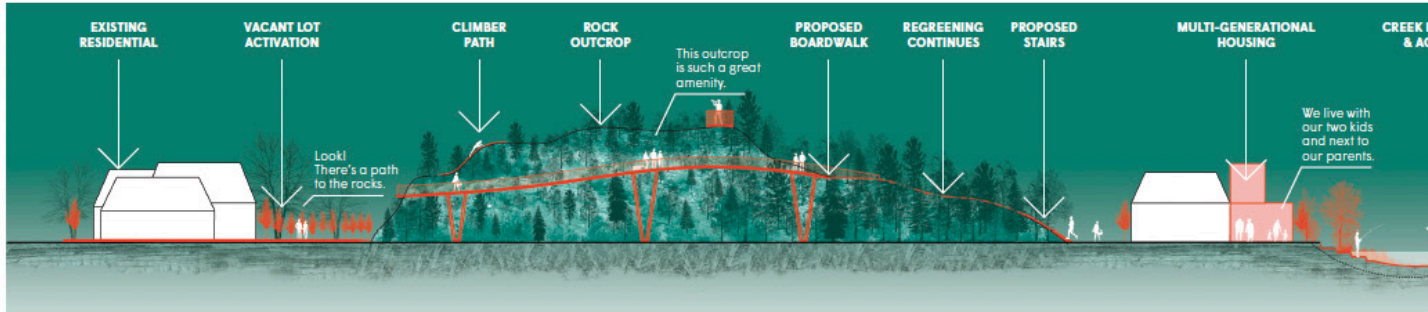


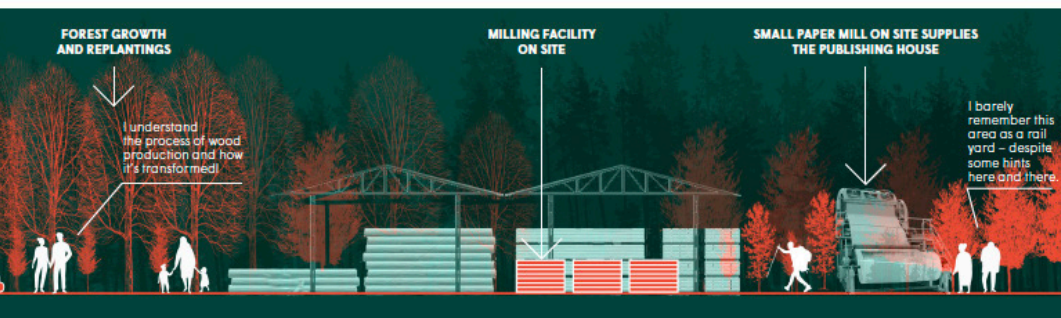
6752 RELOCAL

Michelle Blom / Rane Leung / Preetika Balasubramanian / Michael Szilagy / Paul Hicks

3.4

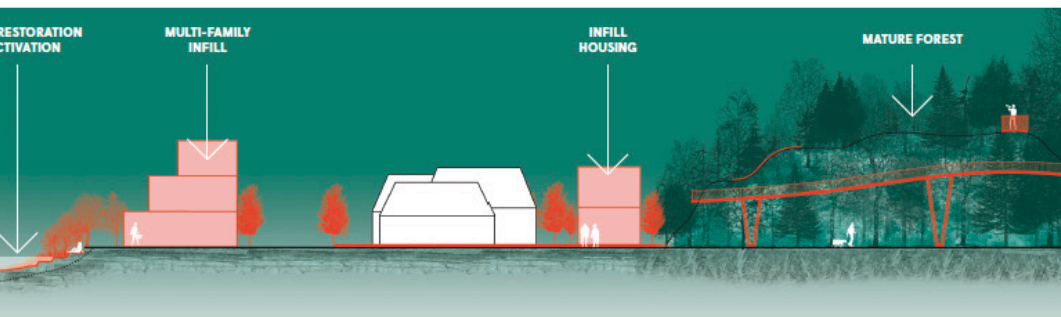
SUPPORT KNOWLEDGE SHARING





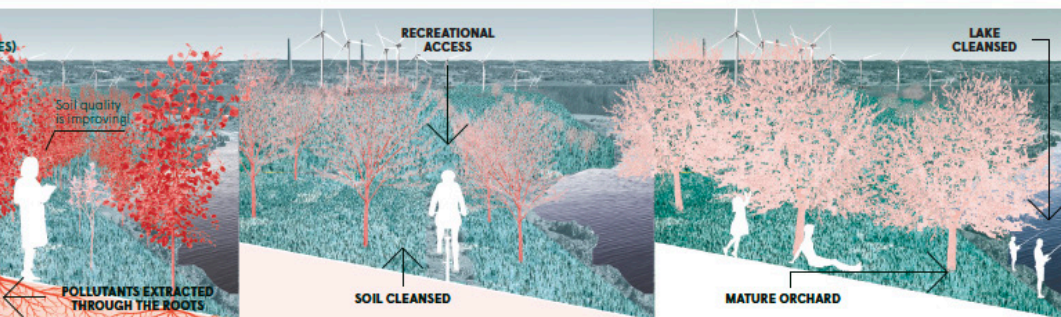
Course 3: Nature

A model forest such as this one represents endless casual educational, recreational, and eventually productive opportunities. Recent research suggests that walking in forest increases psychological health. A sustainably scaled paper mill demonstrates a process of transformation, and supplies the Architectural Press with paper for its City Code series. As the site is remediated, the forest also provides goods other than simply wood such as NTFPs. By offering an open-ended and adaptable forestry process, this course significantly impacts downtown life.



Course 4: Home

This course offers the opportunity to understand the broader geological history of Sudbury and the 40 years of greening efforts of the city through the microcosm of the home and surrounding neighbourhood. Improving access to unique landscape features and granting new recreational rights contributes to raising quality of life in the neighborhood. Adding to the residential fabric through methods of intricate densification and redevelopment offer an alternative to building on more suburban land. Together, these hubs form a chain of active green neighbourhoods.



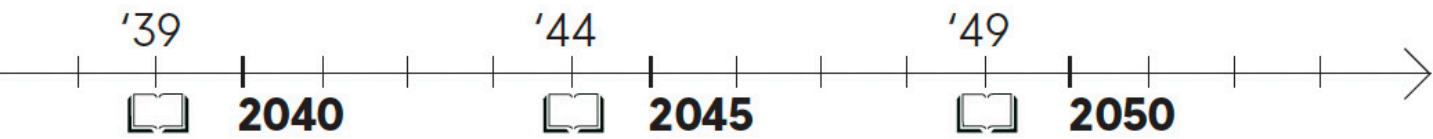
Course 5: Technology

The tree and mine accomplish nearly polar opposite outcomes. A tree provides multiple services, and here it is most directly able to contribute to the reduction of environmental harm in favour of environmental care. Mining operates at varying cycles, from care and maintenance shutdowns to the cycle of exploration and closure. But toxicity has a longer memory. At three new sites, the capacity for phytoremediation to engender new yet equally productive lives will be explored in full, understanding healing land as catalyzing economic sustainability as symbiotic efforts.



Course 6: Time

This course constructs a regional narrative different than that told by the Group of Seven. The train as pedagogy instead instigates a move towards reconciliation. As settler-designers we stand in solidarity with those working on the land to enact these changes and look to the Tshuettin Rail Transportation Inc., as a model of Indigenous rail ownership. Meanwhile, the summer curatorial fellow will filter the other 5 course findings through an analytic that confronts the often violent contradictions of Canadian urban history.



3.5 CELEBRATE TRADITION



0351 COLLECTIVE CITY

Jesse Martyn



5213 RE-STITCHED

Aidan Lucas / Maeve Macdonald



3120 THE HYBRID CITY

Jie Liu / Kai Tian / Ran Li



3184 SUDBURY ARCHWAY PLAN

Tatiana Estrina / Lena Ma

EPILOGUE

Like many of my colleagues from the International Advisory Board of McEwen School of Architecture, I volunteered to be one of the jury members for the remarkable Sudbury 2050 Urban Design Ideas Competition. I was also delighted to be one of the online hosts for the finalist presentations along with television broadcaster, Steve Paikin.

Competitions of this caliber are a gift to political leaders and urban planners. They bring next-generation ideas to cities that need clarity about how to change and evolve over time. They catalyze action. They inspire inexpensive micro moves and larger strategic policies.

The Barcelona we know today, the one that was reinvented starting in the 1980s, was re-designed in micro and macro ways through design competitions. The city was poor, the courtyards and back lanes were clogged with garbage and parked cars, and yet, through the leadership of its Catalonian leaders, architects and artists from around the world brought the change that was necessary, delivering a vibrant metropolis of innovative public spaces and streets for all.

The Sudbury 2050 Regenerate, Reimagine, Reveal document delivers ideas by 99 educated, fresh thinkers from around the world imagined without the complicating and often paralyzing weight of bureaucracy or politics. They are imagined specifically for Sudbury, a mid-sized city, set on an inherently beautiful northern landscape, still digging its way out of a brutal industrial past. There has already been much healing of the landscape and the lakes. Now it's time for Sudbury to beautify the downtown core and repurpose derelict areas, actively supporting knowledge sharing and Indigenous traditions, while growing housing density. Through vibrant revitalization, a more dynamic Sudbury can emerge, one that is safe for all residents, all business owners with design that reinforces and supports existing community hubs and places of learning such as the McEwen School of Architecture.

Richly illustrated and intelligently written, this ideas competition document could operate as a bible for incremental, step-by-step, invigorating change for Sudbury. It is designed to engage the Downtown Master Plan Community Advisory Committee and all of the City of Greater Sudbury staff. It is a model of progressive city building critical for local politicians to understand. It is a gift of the imagination steeped in real-world, test-driven models of great urban design.

What a gift to the citizens of Sudbury!

Lisa Rochon

Founder, Citylab, Architecture Critic, Author
Member, McEwen International Advisory Board

COMPETITION CREDITS

Competition Professional Advisors

Blaine Nicholls, FRAIC, former partner at NYB Architects/Architectes (now Bélanger Salach Architecture), Sudbury, ON.

Dr. Terrance Galvin, FRAIC, Founding Director & Professor, McEwen School of Architecture (MSoA), Laurentian University, Sudbury, ON.

International Jury Members

Shannon Bassett, MRAIC, McEwen School of Architecture

Brian Bigger, Mayor of Greater Sudbury/Grand Sudbury

Dr. David Fortin, LEED AP, Director, McEwen School of Architecture

Victor Klimchuk, LEED AP, architecture49 Inc.

Bruce Mau, Bruce Mau Studio; Co-Founder of Massive Change Network

Geoff McCausland, Councillor, City of Greater Sudbury

Cheryl McEwen, Make My Day Foods Inc.; McEwen International Advisory Board

Deb McIntosh, Councillor, City of Greater Sudbury

Marianne McKenna, OC, OAA, Founding Partner KPMB Architects

Jason F. McLennan, CEO, McLennan Design; Chairman, International Living Future Institute

Tristan O’Gorman, Graduate Student, McEwen School of Architecture

Britney Ottley-Perrotte, Graduate Student, McEwen School of Architecture

Lisa Rochon, Founder of Citylab; architecture critic and journalist

Dee Dee Taylor Eustace, OAA, Founder of Taylor Hannah Architect Inc.

Ted Wilson, OAA, Master Lecturer, McEwen School of Architecture

Jury Facilitator

Toon Dreessen, FRAIC, OAA, President DCA Architects (Ottawa)

Finalist Presentations Online Hosts

Steve Paikin and **Lisa Rochon**

Competition Sponsors

Carpenters District Council of Ontario

Copy Copy Printing

Canada Research Chair – ACME (Université de Montréal) – CCC entries

Element5 Co. (Mass Timber Structures)

Greater Sudbury Chamber of Commerce

McEwen School of Architecture (MSoA)

McEwen International Advisory Board

Northern Ontario Society of Architects (NOSA)

Studio123 (web design and Sudbury2050.ca website)

Open Category Prizes

Winner: “Sève” - \$50,000 prize

Team 322: Karyna St.-Pierre, Julie Parenteau, Emilie Labrousse, Pierre-Yves Diehl

Honourable Mention: “Mashkikike”

Team 8341: Emilio Portal, Matthew Hunter, Jayden Daoust, Elyse Portal, William Morin, Miranda Virtanen, Naomi Grant, Cora-Rae Silk, Camille Tremblay Beaulieu, Simon Blakeley, Rebecca Elphick, Megan Tran

Honourable Mention: “Northern Traction”

Team 3802: Zain Karsan, Natalie Bellefleur

Student Category Prizes

Winner: “Re-Stitched” - \$10,000 prize

Team 5213: Aidan Lucas, Maeve Macdonald

Honourable Mention: “Collective City”

Team 351: Jesse Martyn

Honourable Mention: “Urban Constellation”

Team 1478: Gaël Biache, Elise Dalmasso

People’s Choice Award

Winner: “Bold & Beautiful” - \$3,000 prize

Team 4245: Bryan Jian Hao Goh, Charmaine Chua Wei Ying, Chun Ho Christopher Wong, Nabhatsorn Na Thalang, Rachel Yi En Chiam, Tessa Hui Zhi Tan

Competition Document

Regenerate, Reimagine, Reveal was funded by **Bélanger Salach Architecture (BSA)**, Sudbury, ON.

Design and layout by **Tristan O’Gorman**; edited by **Blaine Nicholls** and **Terrance Galvin**.

Copyright ©2023 by the McEwen School of Architecture (MSoA).

**REGENERATE,
REIMAGINE, REVEAL**

Envisioning the Mid-Sized City of the Future
A Synthesis of the Sudbury 2050 Urban Design Ideas Competition